

**A REDUCTION SALE OF THE  
THE LATE LES OAKES COLLECTION**

**AUCTION TO BE CONDUCTED BY**

**Thimbleby & Shorland**

On site at

**Hales View Farm, Oakamoor Road, Cheadle, Stoke on Trent,  
Staffordshire ST10 4QR**

on

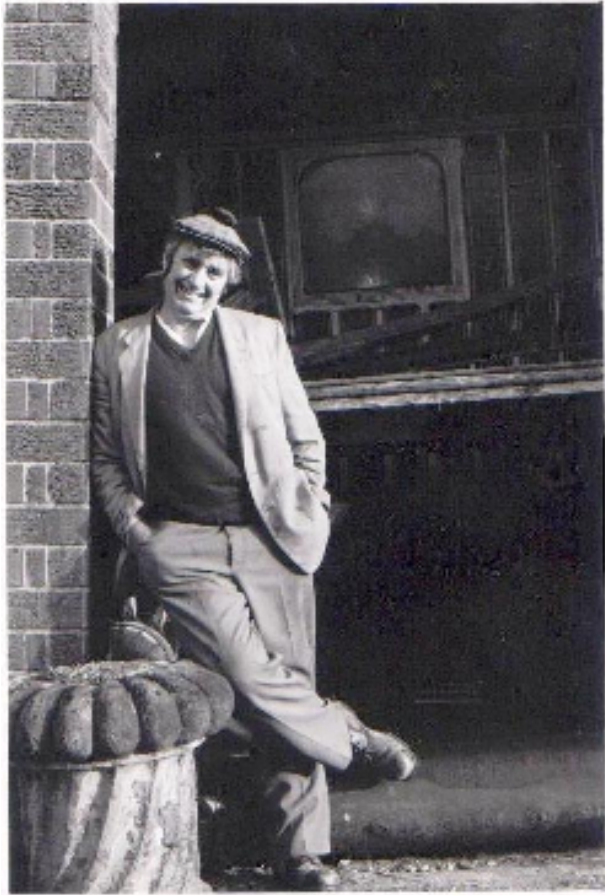
**Wednesday 29<sup>th</sup> July at 10.00 am**

**Viewing: Tuesday 28<sup>th</sup> July 10.00 am – 4.00 pm**

**CATALOGUE £10.00**

**SALE DAY TELEPHONE – 07841 974296 or 07831 436112**

## FORWARD



Les Oakes was born on 21<sup>st</sup> March 1938 at Lower Grange Farm, Cheadle, Staffordshire.

At the age of 7 he was attending auctions with his Grandfather buying and selling horse-drawn vehicles and memorabilia, he was also buying and selling pigeons and ferrets from his school locker.

At the age of 11, whilst attending Cheadle Secondary Modern he had, unbeknown to his father, amassed over 70 horse-drawn vehicles and stored them at various local farms in and around Cheadle where he worked in the evenings and at weekends to pay for the storage costs.

Upon leaving school at the age of 15 he carried on farming with his father whilst attending more auctions to add to his growing collection.

To make the money to enable him to buy his vehicles and memorabilia he built wooden sheds out of ammunition boxes and sold them to the people of Cheadle and the surrounding areas.

In 1965 he married Mavis and moved to Hales View Farm, Cheadle, Staffordshire where he continued to farm cows and sheep.

Whilst farming, he continued to attend auctions collecting more horse-drawn vehicles and other memorabilia to add to his collection. He also ran an Architectural Salvage business reclaiming various items from demolition sites which he sold and also re-used in his buildings at Hales View Farm as and when further storage facilities were required for his ever growing collection.

By 1970 he had started constructing the buildings at Hales View Farm to house his collection that was spread around local farms around Cheadle.

Les also owned 3 Shire Horses all black with four white feathers with which he attended agricultural

shows around the UK.

He carried on attending auctions and increasing the size of his collection up until his tragic death in 6<sup>th</sup> September 2000 when returning from an auction.

By the time Les passed away his collection consisted of approximately 600 horse-drawn vehicles of various sizes and types including Gypsy Caravans, stationary engines and vintage vehicles and memorabilia from the past 100 years which is now held in a private museum at Hales View Farm.

## CARRIAGE PARTS

Commencing at 10.00am

- 1 Shafts, poles, wheels, turntables, springs and swingletrees to be sold individually or in lots (**100 lots, 1-100**)

## SUNDRY ACCOUTREMENTS

- 101 Pair of black octagonal lamps with pagoda tops, glass slightly damaged **Illustrated**
- 102 Pair of black/brass square fronted lamps with pagoda tops
- 103 Pair of black/brass oval fronted lamps stamped *JA Lawton & Co., Ltd of London & Liverpool*, slight damage to glass **Illustrated**
- 104 Pair of large black/whitemetal Coach lamps with pagoda tops
- 105 Pair of black/brass round fronted lamps
- 106 Pair of black oval fronted lamps
- 107 Pair of black/brass square fronted lamps marked *HY Angus & Co., Newcastle upon Tyne*
- 108 Pair of large round fronted black/brass lamps, 7½" dia. x 19" high
- 109 A single small black lamp with unusual diamond shaped glass
- 110 Pair of black/whitemetal square lamps marked *Lavender & Son, Fairbanks, Walsall*
- 111 Pair of black/brass scalloped fronted lamps by *Smith of Stockport*
- 112 Pair of large black/brass round fronted lamps by *Keites & Sons, Leicester* **Illustrated**
- 113 Pair of black/brass oval fronted lamps converted to electricity
- 114 Pair of black/whitemetal horseshoe fronted lamps; slight damage to glass
- 115 Pair of black/brass hexagonal lamps with pagoda tops marked *Culpeck of Croydon*
- 116 Pair of large black square fronted lamps with beveled glass and pagoda tops by *Barker & Co., Chandos Street*
- 117 Pair of large black/brass square fronted lamps with beveled glass by *J.Marston & Co., Birmingham*
- 118 Pair of large black/brass oval fronted lamps with bullseye glass fronts marked *Anne Cowburn, Manchester*
- 119 Pair of black/brass lamps with beveled glass and pagoda tops
- 120 A large black/brass single hexagonal lamp with beveled glass and pagoda tops, 34" high **Illustrated**
- 121 Pair of large black/brass Road Coach lamps with oval fronts stamped *Davis Hart, Grosvenor Square, 11½" dia.*
- 122 An unusual small black step lamp **Illustrated**
- 123 Pair of small black round fronted rear lamps
- 124 Small round fronted brass acetylene lamps with bullseye by *Josh Lucas Ltd., Birmingham* for a car **Illustrated**
- 125 Brass car lamp similar to above but smaller **Illustrated**
- 126 Pair of black square fronted lamps
- 127 Black round fronted lamp by *Lucas King*
- 128 Pair of brass square fronted lamps with decorated tops
- 129 Two square lamps
- 130 Five assorted single lamps
- 131 Five assorted single black/brass lamps
- 132 Four assorted black/brass oval fronted lamps
- 133 Ten assorted lamps
- 134 Large oblong lamp with beveled glass and pagoda top
- 135 Six brass lamp brackets

**PLEASE NOTE THERE WILL BE A 7½% (PLUS VAT)**

**BUYERS' PREMIUM ON ALL LOTS IN THIS SALE**

136	Five black bowler hats of varying sizes	162	Nosebag
137	Five black bowler hats of varying sizes	163	Small yellow wheel with metal tread, 22"
138	Brown bowler hat and another black	164	Pair of long reins
139	Five grey top hats of varying sizes	165	Brown plastic muzzle
140	Three black top hats of varying sizes	166	Cavesson
141	Straw boater and Trilby	167	Heavy horse bridle
142	Wicker/cane umbrella basket for a Coach	168	Pair of leather lead reins each with 41 brass studs
143	Nine large assorted coaching umbrellas	169	Leather strap with nine brass beehive decorations
144	Three ladies parasols	170	Black leather breeching with brass buckles
145	Three umbrellas	171	Crupper and breeching
146	Pair of solid brass No.2 hames	172	Quantity of black leather traces
147	Pair of hames	173	Three rein rails
148	Pair of hames	174	Pair of small wooden wheels
149	Pair of hames	175	Two pairs of whitmetal hames
150	Pair of hames	176	Pair of solid brass hames
151	Wicker picnic basket	177	Pair of solid brass hames
152	Wicker picnic basket	178	Two pairs of hames
153	Pair of long rubber riding boots	179	Quantity of leathers
154	Pair of metal spoked wheels with rubber tyres, 26"	180	Heavy weight leather hide
155	Pair of metal spoked wheels with rubber tyres, 24"	181	Oil lamp with ornate cast iron base and glass funnel by <i>Silber Light Co., London</i> <b>Illustrated</b>
156	Ridge chain	182	Brown leather hat box with top hat, Mode de Paris
157	Small wooden bucket with handle	183	Brown leather top hat box and top hat
158	Pair of 22" wooden wheels by <i>A Ward, Leicester Square, London</i> ; new	184	Two pairs of brown leather gaiters
159	Three sundry wheels	185	Brass coach horn, 46½"; damage to mouthpiece
160	Wooden wheels, 21½"	186	48½" brass coach horn
161	Three sundry wire wheels	187	Magazines: Assorted <b>Horse and Hound</b> magazines

- 188 Synthetic navy cushion
- 189 Leather button back carriage cushion
- 190 Bowler hat and box
- 191 Wooden heavy horse measuring stick
- 192 Brass collar measurer, marked *AR Old, Middlesborough* **Illustrated**
- 193 Wooden/brass swingletree
- 194 Leather with seven brass studs with a bell on the end
- 195 Heavy horse bridle with brass buckles
- 196 Black top hat by *GA Dunn & Co., Piccadilly, London*
- 197 Grey top hat by *Lincoln Bennett & Co., Hatters*
- 198 Books: **British Encyclopaedia, Vol.1-12** within a wicker basket
- 199 Pair of spelter models showing two rearing horses and figure
- 200 Quantity of assorted equine books
- 201 Framed advertising card, *Greensmith's Derby Dog Bisc*, 31" x 26"  
**Illustrated**
- 202 Pub mirror, *King's Head Navy Rum & Gin*, 23" x 23" **Illustrated**
- 203 50" coach horn; no mouthpiece
- 204 Black leather collar with brass hames, 17½"
- 205 Black heavy horse collar with check lining, 21"
- 206 Black narrow collar, 22½"
- 207 Black leather collar, 20½"
- 208 Black leather collar with four brass studs
- 209 Heavy horse collar with brass hames and hausen **Illustrated**
- 210 Cart pad with brass buckles
- 211 Black cart pad
- 212 Quantity of assorted pictures to be sold individually (**20 lots, 212-231**)
- 232 Five various black/brass carriage lamps
- 233 Three small assorted carriage lamps
- 234 Railway signallers' lamp by *G Polkey Ltd., of Birmingham* with moveable amber, green and red lenses **Illustrated**
- 235 Pair of round fronted black/nickel lamps with etched side glass by *Selby & Co.*
- 236 Pair of small bugles, 10"
- 237 Holly driving whip with silver ferrule marked *Xmas 1906*
- 238 Holly dog leg whip with whitemetal ferrule
- 239 Wood buck bow saw **Illustrated**
- 240 Wood buck bow saw **Illustrated**
- 241 Pair of animal horns
- 242 Wooden carrying case containing weighing scales with weights, brass tray and wire basket by *JW Woodhouse & Son, Sheffield*
- 243 Large wicker chair
- 244 Brown leather hat box and key with red quilted interior stamped *J.M Ansdell*, containing black bowler hat by *Royalty*
- 245 Copper kettle; spout not attached **Illustrated**
- 246 Copper kettle **Illustrated**
- 247 Larger copper kettle **Illustrated**
- 248 Copper milk bucket **Illustrated**
- 249 Copper milk bucket **Illustrated**
- 250 Set of four heavy horse bells
- 251 Driving whip with twelve whitemetal ferrules and butt cap
- 252 Hunting crop by *Crawley & Son, Peterborough*
- 253 Leather covered riding crop with brass ferrules and butt cap
- 254 Riding crop with bone handle marked *J. Powell, Kinglsey Holt, 1906*

- 255 Harmonica and carrying case by *Coop G'armonica, Strudella Harmonica* with mother of pearl keys and decoration **Illustrated**
- 256 Framed picture advertising, *J.W Richardson & Son, Coachwork*, 37" x 30½" **Illustrated**
- 257 Wooden carving of a child's face for a Gypsy Wagon
- 258 Pack saddle pad
- 259 Small pair of rams horns
- 260 Heavy horse pad with breeching
- 261 Heavy horse back band
- 262 Quantity of tan leather reins
- 263 Five carriage cushions
- 264 Tin hat box **Illustrated**
- 265 Pair of electric animal clippers by *Oister*
- 266 Large copper ships light marked *Starboard* and plate *Seahorse GB Trade Mark 48701* **Illustrated**
- 267 Large copper ships light marked *Port* and plate *Seahorse GB Meteorite P103190*
- 268 Large copper ships light marked *Masthead* and plate *Seahorse GB Trade Mark 48480* **Illustrated**
- 269 Four wooden bobbins on a rope
- 270 Quantity of leather straps
- 271 Small wheel
- 272 Black grooms suit
- 273 Spare **(8 lots, 273-280)**

#### SETS OF HARNESS

**Note: Sets are sold as seen and no guarantee is given as to whether they are complete or not**

- 281 Set of brown/brass pony harness with yellow brow band; new
- 282 Set of black/patent/brass PAIR harness to suit 13 to 14 hh with 22½" collars and brass hames, box keepers and bridles, one with bit
- 283 Set of black/patent/brass harness with box keepers, bridle and 4½" bit
- 284 Set of black/chrome heavy horse plough PAIR harness by *T.Marshall Saddlers, Manchester*, with chrome plated plough chains **Illustrated**
- 285 Set of black/whitemetal harness to suit 13 hh with 20" collar and hames and bridle with 5" bit
- 286 Spare **(15 lots, 286-300)**

#### FURNITURE – Note: Furniture will be sold inclusive of VAT

- 301 Victorian cast iron mangle **(10 lots, 301-310)**
- 311 Irish settle, 5' 8" high x 5' 1" wide x 22" deep **Illustrated**
- 312 Two piece Irish dresser in crackle finish with two cupboards and three draws above, 7' high x 5' 2½" wide x 18" deep **Illustrated**
- 313 Two piece Scottish dresser in green crackle finish with three draws between two cupboards, 7' high x 5' 2½" wide x 18" deep **Illustrated**
- 314 Oak glazed display dresser with sliding doors
- 315 Gothic mirror in crackle finish **Illustrated**
- 316 Small gothic mirror **Illustrated**
- 317 Irish boat builders' chair **Illustrated**
- 318 Spare **(3 lots, 318-320)**
- 321 Red telephone box **(2 lots, 321-322) Illustrated**

**GARDEN STATUARY - Note: Garden Statuary will be sold inclusive of VAT**

- 331 Pair of large marble lions on plinths **Illustrated**
- 332 Pair of greyhounds of reconstituted bath stone, 4'1½" high x 18" wide x 24" long **Illustrated**
- 333 Cast iron garden bench with wooden slats
- 334 Cast iron garden bench with wooden slats
- 335 Cast iron garden bench with wooden slats
- 336 Garden tree seat to fit a tree with maximum diameter of 31" **Illustrated**
- 337 Stone trough late 18th century, 7' 8" long x 2' 4" high x 3' 4" wide from a large country estate
- 338 A similar lot, 5' long x 3' high x 2' wide **Illustrated**
- 339 Stone trough partially covered, 5' 4" long x 2' 8" high x 3' 2" wide **Illustrated**
- 340 Limestone trough, 3'
- 341 Limestone trough, 3'
- 342 Millstone, 2' 2" high x 6" wide
- 343 Millstone, 2' 4" x 6" wide
- 344 Pair of millstones, 1' high x 3" wide
- 345 Millstone, 1' 1½" high x 1' wide **Illustrated**
- 346 Millstone, 1' 1½" high x 1' wide **Illustrated**
- 347 Millstone, 1' 1½" high x 1' wide **Illustrated**
- 348 Millstone, 3' high x 11" wide **Illustrated**
- 349 Cast iron salt box marked *City of Westminster 1990*, originally made for the borough by *Broxap & Corby Ltd., Manchester* but never used **Illustrated**
- 350 Carved marble fountain depicting 3 ladies with cherubs on the plinth, 6' 8" high x 32" bowl diameter **Illustrated**
- 351 Corner iron hay rack
- 352 Corner iron hay rack
- 353 Corner iron hay rack
- 354 Corner iron hay rack
- 355 Wall mounted iron hay rack
- 356 Pair of cast iron swan urns on plinth, 10' high **Illustrated**
- 357 Pair of white terracotta urns on plinths, 6' 10" high **Illustrated**
- 358 Pair of boars, weighing approx. 2½ tonne each, 6' 9" high x 4' 4" wide x 5' 3" long **Illustrated**
- 359 Pair of green terracotta urns on plinths, 7' 4" high **Illustrated**
- 360 Cast stone bench, 3' high x 5' 6" long x 2' 4" deep **Illustrated**
- 361 Pair of cast stone eagles, 4' 4" high **Illustrated**
- 362 Five limestone troughs
- 363 Cast iron village pump **Illustrated**
- 364 Pair of reproduction cast iron urns on plinths, weighing approx. 1½ tonne each **Illustrated**
- 365 Cast iron village pump with dragon spout **Illustrated**
- 366 Pair of cast iron Regency style urns on plinths, 5' high x 35" dia. **Illustrated**
- 367 Pair of cast iron scalloped urns, 2'3½" high x 21" dia. **Illustrated**
- 368 Mixed garden ornaments and statuary (**10 lots, 368-377**)
- 378 Ten pairs of half oak whiskey barrels (**10 lots, 378-387**) **Illustrated**
- 388 Full size whiskey barrels (**5 lots, 388-392**)
- 393 Wooden dove cote **Illustrated**
- 394 Stone Japanese lantern **Illustrated**
- 395 Cast iron turnstile by Bailey of Manchester
- 396 Pair of white swan necked urns, 3' 8½" high x 2' 6" wide

- 397 Cast iron 3-tier fountain **Illustrated**  
398 Red GPO telephone box (**2 lots, 398-399**)  
400 Spare lots (**11 lots, 400-410**)

#### **STATIONARY ENGINES**

- 411 Black 1938 *Lister CS 3/1* 3hp diesel engine **Illustrated**  
412 Green 1916 *Lister 'L'* type 4hp petrol steam engine **Illustrated**  
413 Red 1936 *Lister 'A'* type 3hp petrol engine and a *Lister H2* water pump **Illustrated**  
414 Green 1938 *Lister 'D'* type 1.5hp petrol engine and *Climax* water pump **Illustrated**  
415 Boat engine water cooler **Illustrated**  
416 Green *Lister 'H'* type 2hp steam engine **Illustrated**

**BUYERS ARE REQUESTED TO REGISTER WITH THE AUCTIONEERS  
BEFORE THE SALE COMMENCES TO ASSIST WITH CASHIERING  
ARRANGEMENTS**

**PURCHASERS WILL ALSO BE ADDED TO THE MAILING LIST TO RECEIVE  
FUTURE CATALOGUES AND NOTIFICATION OF SALES**

**PLEASE NOTE THERE WILL BE A 7½% (PLUS VAT)**

**BUYERS' PREMIUM ON ALL LOTS IN THIS SALE**

## DIESEL TRAINS

- 420 Blue and red diesel train shunter, plate *Brush Traction No. 3096, 1956, England Illustrated*
- 421 Blue, red and yellow diesel train shunter **Illustrated**
- 422 Red and yellow diesel train shunter **Illustrated**

## LOG FLUMES

- 423 Log flumes from the American Adventure Park to be sold individually (**6 lots, 423-428**) **Illustrated**

## VINTAGE MOTOR VEHICLES

*Note all these vehicles are in need of major renovation. The registration numbers are no longer allocated to these vehicles. No V5s are available*

- 431 **Thornycroft 1950 Fire Engine** – registration no.VNX 19 with Rolls Royce petrol engine and Sun bodywork **Illustrated**
- 432 **Dailmer Straight 8** - registration no. MNF 872, with living van attached **Illustrated**
- 433 **Austin A55 Devon Countryman** – registration no. OLV 129 with 'A' mascot **Illustrated**
- 434 **Ford Van** - registration no. DGV 862 **Illustrated**
- 435 Red telephone box (**2 lots, 435-436**) **Illustrated**

## HORSE-DRAWN FARM IMPLEMENTS

- 441 to include about 20 ploughs and various horse drawn cultivators etc (**20 lots, 441-460**)

## HORSE-DRAWN FARM WAGONS - Commencing at 2.00pm

- 501 **THRESHING MACHINE**, by Ruston Proctor & Co. Ltd., Lincoln
- 502 **THRESHING BOX**, by Millwright & Engineers of Aberdeen circa 1900; painted orange and red with plaques on the side marked *R G Garvie & Sons*. On cast iron wheels, ¾ size
- 503 **FARM CART**, on two 37" 14 spoke wooden wheels with iron tyres and semi elliptic springs; painted blue with yellow lining. With splash guards and rear drop-down door
- 504 **TRADE FLOAT**, on 54" iron shod wheels; painted brown, with turned spindles to the inside of the body
- 505 **FARM CART**, on 54" wheels; painted red and marked on the side *James Rutter, Cunnerside*
- 506 **THAI TRADE CART**, on semi elliptic springs and rubber tyred wheels. The slatted body with domed top and a door to the rear, and in need of restoration
- 507 **TRADE FLOAT**, of Italian origin and possibly for a pair of oxen having a single pole; in a white wash finish. On iron shod wheels with extended rack to the front, brakes and writing on the sides
- 508 **FRENCH MARKET CART**, by J.Journet, Vouvizai Ct. Montoria; the body in natural wood on 57½" red iron shod wheels. With semi elliptic springs and extended rear section

- 509 **FARM CART**, painted blue with red wheels
- 510 **THREE QUARTER BOAT WAGON**, dated 1910; painted light blue and marked on the side *W Davey & Sons, Boyton*. The body with arched, bowed sides, on metal bound wooden wheels
- 511 **HAY WAGON**, painted blue on pale red unders lined black; with 40" front and 55½" rear metal bound wheels
- 512 **WILTSHIRE FARM WAGON**, painted light blue and marked on the back *Thomas Gent, Worth End Farm, Luckington, Wiltshire*
- 513 **DORSET WAGON**, built circa 1920; painted blue with orange wheels and unders, and marked *A T Studley, Gt. Toller*. Without a floor
- 514 **GLOUCESTER WAGON**, painted yellow with red unders, and red and blue lining
- 515 **LINCOLNSHIRE WAGON**, painted orange with black scrolls and marked on the side *H Burt, The Manor Farm, Pattishall*
- 516 **FARM WAGON**, painted yellow, with red iron shod wheels; with a drag shoe and shafts
- 517 **FARM WAGON**, painted light and dark green; with iron shod wheels, drag shoe and shafts
- 518 **FARM WAGON**, painted light and dark blue
- 519 **FARM WAGON**, in varnished natural wood with red decoration

- 520 **MILLERS FARM WAGON**, in varnished natural wood and faintly marked *Hintwood, W. Col. Unthank*. A very large vehicle on semi elliptic springs
- 521 **FARM CART**, to suit a Shire; painted yellow with red unders and blue lining. With shafts and drag shoe
- 522 **FARM WAGON**, with raised front and domed roof; painted blue with red unders and iron shod wheels. The body has ribbed sides, an external driver's seat and handbrake; the top was possibly added later for film work
- 523 **COUNTRY CART**, painted blue

#### TRADE VEHICLES

- 525 **HAND CART**, built by Nicholson & Son, Tool Merchants, Halifax and marked on the side *Hungerford Waterworks & Co. Ltd*. With a pipe vice on the back, hinged wooden top and metal bound wheels
- 526 **COSTERMONGERS TROLLEY**, painted maroon and yellow, with brown, white, gold and green decoration and scalloped edges. With a pan type box, raised rear section and shafts
- 527 **BUTCHERS CART**, painted black on yellow unders, with yellow lining and gold lettering *R S Roberts, The Butcher, Est. 1900 Tel. 2331*. On triple springs and 16-spoke warner wheels with a drop tailboard
- 528 **KNACKERS CART**, painted red and marked *Ernie Pleasants, Shottesham, Brooke*. With a winch and metal bound wheels

- 529 **MUNITION WAGON**, on iron shod wheels and painted green; with chain brake, drag shoe and foot board
- 530 **BUTCHERS CART**, to suit 14 hh; painted brown lined yellow, with yellow wheels lined black, with gold lettering *Field's Quality Meats, Phone 4760 and Quality Meats*. On 45" 16-spoke warner wheels and triple springs
- 531 **BAKERS VAN**, by the Bristol Wagon & Carriage Works to suit a cob; painted brown with yellow lining and yellow wheels. The sides are lettered in gold *Birmingham Co-Operative Bakery Department, Van 150*. With 31" front and 50" rear wheels, semi elliptic springs and a handbrake
- 532 **BAKERS VAN**, on full and semi elliptic springs; with two oval side windows, footbrake and shafts
- 533 **BRADFORD CART**, well finished in black on yellow unders, and elaborately decorated and lined in gold and multi colours. The varnished central section of the floor is marked in red *The Challenge* and painted with two horses in gold rope surround, flanked by four painted belts and scrolls; the underneath is decorated with a black rearing horse against a sunburst background. The sides and rear are lettered *General Dealer*, the rear also marked *Roy Morris, Painter, Bolton*, and bear gold carved horse heads. The edges have been chamfered, the chrome metalwork is well scrolled and the double bench seat is on metal and arched wooden supports, with a cockerel to the middle; the axle case has been turned and is flanked by two horse heads. The neat shaped dashboard with trade rein rail is also lettered *Roy Morris* and is decorated with a horse head and birds, the shafts are fitted with turned props and there is a turned swingletree with axle chains

- 534 **PANTECHNICON**, on small iron shod wheels and painted black with maroon ribs. With semi elliptic springs, handbrake and pair of doors to the rear with metal crossbar to secure
- 535 **MARKET CART**, painted black with red lining, with yellow sign writing to the sides *Richard Finney, Family Butcher*. On 56" wheels and triple springs with an adjustable seat and rear spindled drop down door and step

#### HEARSES

- 538 **HEARSE**, believed to be by John Marston of Birmingham, to suit 15 hh and over, single or pair; finished in black with ornately carved corner columns to the beveled glazed body, surmounted by filigree and star motifs. The unusual skeleton type front is mounted with carved heads to the sides and is on elliptic springs and warner wheels, with a bowed splinter bar and handbrake, and the rear section is on triple springs. The interior is fitted with brass rails, stoppers and rollers, with a rolled fringed blind to the rear door
- 539 **CATHOLIC HEARSE**, to suit 15 hh and over; finished in black. The enclosed body is mounted with a domed top, geometric carvings and shaped scroll ended seat back with simulated wooden cloth sides and the original cushion, the sides and rear bearing laurel wreath carvings and central 'IHS' motif. With elliptic springs, iron shod wheels
- 540 **HEARSE**, to suit 15 hh and over; painted black. The enclosed body with fluted column and crown decoration, the corners and roof mounted with carved plumes and a central urn, with a glazed door to the rear

## FIRE ENGINES

- 541 **MANUAL FIRE ENGINE**, built circa 1860; painted red. The body on semi elliptic springs, with a double handbrake, 36" and 38" iron shod wheels and hinged side pump handles, with two red fire buckets
- 542 **MANUAL FIRE ENGINE**, by Shand Mason circa 1857; painted red. With provision to be either horse drawn or pulled manually, the wheels are iron shod, and the body is mounted with hinged side pump handles, a ladder and hoses in the sides
- 543 **STEAM PUMP FIRE ENGINE**, by Merryweather of London, originally from Penrhyn Castle near Bangor, North Wales and marked in gold to the sides *Penrhyn Castle*. The boiler bears a plaque inscribed *Merryweather, London 1<sup>st</sup> Grand Patent Steam Engine*, the hubs are stamped, there are double handbrakes and iron shod wheels. Further equipment includes the hoses, shovel, spanner and red fire bucket

## CARRIAGES

- 546 **TOWN COACH**, for rebuilding and renovation, with warner wheels, body base, elliptic springs and metalwork; with some black paintwork and yellow lining
- 547 **CHINESE WEDDING CART**, on wooden wheels, possibly made of bamboo. The domed body with oriental fret work to the sides

- 548 **GOVERNESS CAR**, by Sanders & Son Ltd. of Hitchin, Hertfordshire to suit 13-2 to 14 hh; the spindled body in varnished natural wood. On 39" warner wheels and elliptic springs
- 549 **GOVERNESS CAR**, by Jones of Ammanford; in natural wood with bedford cord upholstery. On semi elliptic springs
- 550 **TONNEAU GIG**, in varnished natural wood with yellow lining. The rounded body with rear door, shaped mudguards, adjustable seat and carved dub ends
- 551 **RALLI CAR**, painted blue with maroon lining. On semi elliptic springs and 16-spoke warner wheels, with an adjustable seat
- 552 **JUBILEE CART**, painted black on yellow wheels, with black lining. An unusual vehicle with leather cab fronted dash, shaped Ralli Car type sides and rear access, on 16-spoke wheels with interesting metalwork
- 553 **RALLI CAR**, by Pickering Bros. of Liverpool; painted black and yellow and lined in contrast. With adjustable seat, well shaped triple springs and 16-spoke warner wheels
- 554 **No lot**
- 555 **SIDE BAR BUGGY**, in varnished natural wood with large black hickory wheels, buttoned tan vinyl upholstery and clip on shafts

- 556 **BOW FRONTED BROUGHAM**, by Morgan & Co. of Long Acre, London to suit 16 hh; finished in blue and black, the interior with the original leather upholstery and ivory mounts. On full and three-quarter elliptic springs, with a handbrake, covered step treads and bowed splinter bar
- 557 **SHELBURNE LANDAU**, to suit 15-2 hh and over; painted maroon and black, on yellow wheels and unders lined maroon. On full and three quarter elliptic springs, with a handbrake, urchin bar and black vinyl hood
- 558 **JERSEY VAN**, on red iron shod wheels, the body painted black. With butterfly type openwork to the sides and a handbrake, the rear lettered in gold *Sir John Mann Bt., The Iveton*
- 559 **BOW FRONTED BROUGHAM**, by Thorne of Norwich to suit 15 hh; painted black. With elliptic springs, handbrake and shafts
- 560 **HOODED PHAETON**, by Ernst La Parle of Toulouse, France; for restoration and on iron shod wheels. With hood, continental type handbrake and rear seat
- 561 **BAROUCHE**, on C-springs, elliptics and perch, to suit 16 hh; painted black. A rare and collectable travelling carriage, with black hood and covers
- 562 **SHELBURNE LANDAU**, to suit 16 hh; painted blue with yellow lining and black hood. On warner wheels and elliptic springs with a handbrake

- 563 **VICTORIA**, by Farrow of Kensington; finished in blue with buttoned black vinyl upholstery and black leather hood. With an occasional seat, handbrake and well shaped mudguards
- 564 **FOUR-WHEELED DOG CART**, by Holmes, on elliptic springs; painted black and green. With a handbrake, leather dashboard and small wicker basket
- 565 **BROUGHAM**, painted black with cream lining. With a handbrake, elliptic springs and small square rear window
- 566 **WAGONETTE BROUGHAM**, by J Fowler & Sons of Harrogate to suit 15 hh; painted yellow and green with contrasting lining. With spindles to the front seat and storage underneath
- 567 **BATTLEDEN CAR**, by Brainsby & Sons of Long Acre, London to suit 13-2 to 14 hh; painted green and black, with yellow lining to the wheels and shafts, and cream cord upholstery. With an adjustable seat and 39" wheels
- 568 **FOUR-WHEEL DOG CART**, to suit 14-2 and over; the body painted black with yellow wheels

**PLEASE NOTE THERE WILL BE A 7½% (PLUS VAT)  
BUYERS' PREMIUM ON ALL LOTS IN THIS SALE**

## GYPSY WAGONS

- 571 **BOW TOP GYPSY WAGON**, by Bill Wright of Rothwell Haigh, Leeds, early 1900s. A unique and superb example by the leading builder of the day, beautifully carved and decorated throughout to the highest standards. The body is in match boarding, with chamfered front and side ribs, carved inter rib scrolls and turned spindles to the cages; to the rear is a shuttered window, pan box and cratch with canvas. The front shows characteristics associated with an early Wright bow top wagon, the door bearing a carved sunflower, the crown board showing a galloping horse, with inter rib carvings of fruit, all decorated in gold leaf. The canvas covered body is on round turned axle cases and semi elliptic springs and is fitted with a handbrake. The base colour is green, with a yellow undercarriage and wheels, with gold and multicoloured lining and decoration throughout. The two tone wooden interior is decorated with gold, red and green scrolls and lining and is fitted with a hostess stove in enamelled surround with flowers and vases, plus drawers and bed compartment *This wagon is illustrated in 'The English Gypsy Caravan'*
- 572 **READING GYPSY WAGON**, the matchboard and rib body painted green, with red, yellow and blue decoration, on iron shod wheels and semi elliptic springs. The woodwork is well finished, with chamfered ribs with inter rib leaf carving, heavily carved porch brackets and shaped turntable. There are shutters to the windows, a pan box and partially glazed mollicroft to the roof. The green and yellow painted interior is fitted with a painted fireplace, glazed corner units and a bow fronted chest of drawers
- 573 **GYPSY WAGON**, thought to be by Dunton of Reading, painted blue. The matchboard body with relatively plain carving, on iron shod wheels and semi elliptic springs, with side and rear windows, pan box and a handbrake. The interior is fitted with a Queenie stove by *South & Wellstood, Columbian Stove Works* and a bow fronted glazed corner cupboard, with brass top the mantelpiece
- 574 **SHOWMAN'S WAGON**, painted burgundy, with cream and yellow unders. With a mollicroft, some carved decoration to the body and pan box; the brake system is present but there is no handle

# **THIMBLEBY & SHORLAND**

## **The Reading Auctioneers, Valuers, Chartered Surveyors, Land & Estate Agents - Established 1901**

### **DID YOU KNOW ABOUT THE WIDE VARIETY OF AUCTIONS AND SERVICES THAT T & S IS INVOLVED WITH?**

As well as running our world famous Reading carriage and heavy horse sales, T & S have a busy programme of auctions each year. We hold monthly sales of horses, ponies & saddlery on the first Friday of the month. On the last Saturday of the month, we hold large auctions with up to 3,000 lots of household & antique furniture & chattels, office furniture & equipment, machinery & small tools, motor cars, garden & nursery stock and other liquidation or receivership stock.

There are the bimonthly sales of contractors plant & equipment, again with 3,000 lots per sale which attract buyers from all over the world, plus an annual sale of grounds maintenance equipment each March.

For over 35 years we have been the foremost international auctioneers of pedigree Shetland ponies and other breeds such as miniatures and British Spotted ponies.

We are one of the leading auction houses for sales of vintage and collectable vehicles of all types.

There is a busy land agency department dealing with agricultural and land valuations, property sales, quotas, compulsory purchases and other professional queries. The enforcement office acting on behalf of the High Court covers most of the south of England and the busy insolvency department regularly handles the sale and valuation of businesses and their assets.

We travel all over the country conducting dispersal and reduction sales on behalf of private clients for all of the above. No job is too big or too small for us to undertake. We are known for and pride ourselves on our highly professional but friendly service and our staff and partners are some of the world's leading experts in their fields.

So why not give us a ring. We would be happy to hear from you and advise you on the sale and valuation of your assets for all purposes – insurance, auction, division or probate. We look forward to hearing from you.

T & S

## SALE NOTES

- DIRECTIONS** The sale will be held on site at Hales View Farm, Oakamoor Road, Cheadle, Stoke on Trent, Staffordshire ST10 4QR. Please refer to the map at the back of the catalogue and 'To The Sale' signs will be in place. Leave M6 north bound off junction 14 and take 3<sup>rd</sup> exit onto the A34 Stone, continue over roundabouts and take A520 Stone, continue taking sign for Leek, then at next mini-roundabout turn right onto B5029 for Cheadle A521, continue and turn right at T junction A521, continue to mini-roundabout turn right onto B522, at next mini-roundabout take left onto B5417, continue to the farm. Hales View Farm will be on the right hand side, opposite Caravan Park
- PARKING** There is parking on site for cars, trailers and lorries. Clients are reminded that they leave their vehicles at their own risk and the auctioneers and vendors are not responsible for any damage incurred while vehicles are parked on site. There will be STRICTLY no overnight parking for lorries or caravans.
- VIEWING** Viewing will be held on Tuesday 28TH July from 10.00 am to 4.00 pm and on the morning of the sale from 8.00 am.
- CONDITIONS OF SALE** The sale will be held under the usual conditions of sale which can be found at the back of this catalogue. In particular, descriptions made verbally or in this catalogue are not guaranteed. Please note that vehicles are attributed to builders on the evidence of their hub caps and clients must satisfy themselves as to the authenticity of the items presented for sale.
- BIDDING NUMBERS** Prospective buyers are asked to register with the auctioneers prior to the sale, whereupon they will receive numbered cards to assist bidding and cashing arrangements. If you are not known to the auctioneers you may be asked for proof of identity and a £500 deposit before a bidding number will be issued. Information will then be used for future mailings and notifications.
- PAYMENT** Payment for all lots must be made on the day of sale. Terms are cash; direct debit cards such as switch, delta or connect with PIN number; credit cards (subject to a 2% surcharge) with PIN number or cheques covered by a cheque guarantee card or a banker's reference. Our bankers are: National Westminster Bank Plc, 13 Market Place, Reading, RG1 2EP (IBAN NO GB WBK 601721 6762977, BIC Code No. NWBKGB 2L), Tel: 0845 6013399. No clearance of purchases will be allowed until satisfactory payment has been received.
- BUYERS' PREMIUM** A buyers' premium of 7½% (plus VAT at the standard rate) will be added to all lots in this sale to be paid by the purchaser.
- MONEY LAUNDERING** Under recent regulations, clients who wish to pay in excess of €15,000 in cash must provide full photographic identification with an address. The auctioneers reserve the right not to accept cash above this limit.
- VALUE ADDED TAX** No VAT will be charged on items in the sale, except the Garden Statuary and Furniture which will be sold inclusive to VAT.
- CLEARANCE** All lots are at the risk of their purchaser from the fall of the hammer. No clearance of goods will be allowed until satisfactory payment has been received and cleared. Please note that vehicles can be cleared once the sale of the vehicles have finished. Smaller items can be collected on the day of the sale. Collection of goods after 29th July can be made by prior arrangement.
- INSTRUCTIONS TO BIDDERS** Commission or telephone bids will be executed with care by the auctioneers on receipt of written instructions from intending purchasers who cannot be present at the time of the sale, providing that they have viewed the lots in advance. Full payment details and a deposit will be required for this service.
- INSURANCE** Clients are advised to take out their own insurance to cover lots purchased at the sale. NFU Mutual (01467 625424) or Carriagehouse Insurance (01206 337388) will be able to advise clients in advance of the auction.
- EXPORTS** **Export** purchasers should ensure that the country of destination has no import or currency restrictions on the goods they wish to purchase. Otherwise our normal terms of business apply and payment in full is due on the day of sale. A specific export licence is required under certain circumstances, depending on the age, value and destination of the object. Further details are available from the auctioneers.
- HEALTH & SAFETY** Clients attend the auction entirely at their own risk. Our health and safety policy document will be available to view during the auction and viewing days. The auctioneers and vendors accept no responsibility for any injuries incurred at the sale site.
- ACCOMMODATION** Clients are advised to book accommodation in advance before attending the sale. Nearby hotels are Moorville Hall Hotel, Leek Road, Werrington, Stoke on Trent, Staffs ST9 0DG Tel: 01782 302326; The Weather Vane, Lysander Road, Meir Park, Stoke on Trent, Staffs ST3 7TW Tel: 01782 388799; Prospect House Guest House, 334 Cheadle Road, Cheddleton, Leek, Staff ST13 7BW Tel: 01782 550639; Premier Inn (Trentham Gardens), Stone Road, Stoke on Trent, Staffs ST4 8JG Tel: 0870 423 6466 & Premier Inn Uttoxeter, Derby Road, Uttoxeter, Staffs ST14 5AA Tel: 08701 977 256
- AIRPORTS** If you wish to arrive by air, the nearest airports are Manchester or East Midlands.
- REFRESHMENTS** Refreshments will be available on the viewing and sale days.