

The Reading Carriage Sale

*including Harness and Saddlery
The Property of the Trustees of the
Spencer Family Collection*



Wednesday 8th September 2010
at 9.30 a.m.

Reading Auction Market
Great Knollys Street, Reading, Berkshire RG1 7HU

INTERNET BIDDING

FOR HORSE-DRAWN CARRIAGES AND CARRIAGE TRAILERS ONLY **LOTS 1 to 120**

Live internet bidding through i-bidder.com will be available at this auction for Lots 1 to 120 only.

i-bidder.com allows you to listen in and view the auction live on-line and to participate in the bidding via their website.

A £500 deposit will be taken from all on-line bidders wishing to bid via www.i-bidder.com prior to the auction.

The deposit will be taken from a debit or credit card when registering on www.i-bidder.com and please note credit card payments attract a 2% surcharge.

Buyers are welcome to pay the deposit by bank transfer, please indicate this through the registration process.

You must sign up for live internet bidding at least 12 hours before the sale date, which is no later than midday on Tuesday 7th September 2010. No internet bidding applications will be accepted after this time.

The auctioneers reserve the right to refuse or withdraw on-line bidding facilities without reason.

Sign ups for this auction are provisional and subject to the approval of the auctioneers.

Internet bidders will be required to pay an additional 3% buyers premium, plus VAT

THE READING CARRIAGE SALE

TO BE CONDUCTED BY

Thimbleby & Shorland

AT

**READING AUCTION MARKET,
GREAT KNOLLYS STREET, READING, RG1 7HU**

ON

WEDNESDAY 8th SEPTEMBER 2010

at 9.30 a.m.

PRIVATE DRIVE, TRADE & AGRICULTURAL WAGONS, AGRICULTURAL BYGONES,
SETS OF HARNESS, CARRIAGE PARTS, SUNDRY HARNESS & ACCOUTREMENTS,
PICTURES, MODELS & BOOKS

*Including Harness and Saddlery
The Property of the Trustees of the
Spencer Family Collection*

Catalogue £7.00

Thimbleby & Shorland
Market House
31 Great Knollys Street
READING
Berkshire RG1 7HU

Telephone: +44 (0) 118 950 8611
Fax: +44 (0) 118 950 5896
Web site: www.tsauktion.co.uk
Email: carriages@thimbleby-shorland.co.uk

Front cover – Lot 35
Back cover – Lots 45, 1333 & 1369

HORSE-DRAWN CARRIAGES

Commencing at 11.00 a.m.

Please note that carriages are often attributed to builders on the evidence of their hub caps and such information cannot be relied upon in some cases

Lot

- 1 OPEN LOT GYPSY WAGON, circa 1920/30's, to suit 13-2 to 15 hh; fitted with a green canvas top, body painted red with green decoration, red undercarriage and shafts. On pneumatic wire wheels with a front mounted 'wheel brake' to rear wheels. Comes with a spare wheel. Regularly used in SW Wales and recently completed a journey from Derby to Lands End



- 2 HALF SIZE BOW TOP CARAVAN, built by Thomas W. Chorly; finished in burgundy and yellow; in smart condition

- 3 MINIATURE BOW TOP WAGON, circa 2010, to suit a miniature pony; green canvas roof, finished in red and yellow with yellow unders, and leaf decoration, rubber tyred wheels, turntable and shafts. The interior is upholstered with bench seat and a small end bed. Ideal for use as a child's Wendy house



- 4 DUNNINGTON GYPSY WAGON, built by Dunnington of Reading, circa 1820, to suit 15 hh; the body painted maroon on yellow unders with 12 and 14-spoke English pattern wheels on leaf springs, all decorated and highlighted in gold, green red and white. Decorated carved dub ends, scalloped ribs and waist board, scrolled porch brackets, weatherboard mounted with lions head gargoyles, front and rear crown boards decorated with a running fox. The roof is mounted with a mollicroft and stove pipe, side and rear windows with shutters, pan box and cratch. The interior is fully fitted in natural varnished wood with gold and red designs of grapes and fruit, a small end bed with cupboards below and a stove. To be sold with a pair of black/whitemetal oval fronted lamps, shafts and steps with handrail. In show condition



5 OPEN LOT GYPSY WAGON, painted maroon on cream unders with red, green and orange lining and highlights, with decorations of grapes, green canvas roof, turn screw brake, rear window with cream shutters, pan box and cratch with cover. Interior is finished in naturally varnished wood, fully fitted with end bed, cupboards and stove. Comes with shafts and steps



6 TWO-WHEEL BABY BUGGY, built by Bennington Carriages, to suit Shetland to 12-2 hh pony; natural stained woodwork on black wheels and running gear, with removable back step and set of hula hoops; in smart condition

7 EXERCISE CART, to suit 12 to 13 hh pony; finished in natural varnished wood with royal blue seating with a rounded slatted footboard and dash, on pneumatics with metal spoked wheels

8 EXERCISE VEHICLE, circa 2005, to suit 14-2 hh; painted red with yellow lining and black upholstery. In show condition

9 TWO-WHEEL BREAKING EXERCISE VEHICLE

10 EXERCISE CART, to suit 13 to 15 hh; finished in blue with black vinyl upholstery

11 TWO-WHEEL TRAP, to suit 12 to 13 hh; in need of attention

12 SULKY, two wheel on metal frame

13 EXERCISE CART, to suit a 12 to 13 hh pony; painted red with yellow rubber tyred wheels

14 FOUR-WHEEL TROLLEY, to suit Shetland pony; painted yellow and red



15 SCURRY VEHICLE, built by Neil Swanson of Marlborough, to suit Shetland to 12-2 hh pony pair; finished in natural stained woodwork with dark green steelwork and running gear, brown vinyl cushions, pole and footbrake. In smart condition

16 FOUR-WHEELED FEI MARATHON/EXERCISE VEHICLE, built by Neil Swanson of Marlborough, circa 1995, to suit 12-2 to 13-2 hh pony pair or team; aluminium body finished in dark green with green vinyl cushions, disc brakes and pole. Well used vehicle in need of some attention, new tyres to the back wheels. Has been used successfully in the National FEI competitions and for daily exercise

17* FEI COMPETITION VEHICLE, built by Rene Schoop, circa 2003 approx, to suit 14-2 to 16-2 hh; finished in blue and in excellent working order

- 18 FENIX BACK STEP BUGGY, to suit 12-2 to 13-2 hh pony; finished in black with black upholstery. In good sound condition, comfortable with back step, an excellent vehicle



- 19 TWO-WHEEL VEHICLE, built by Ken Jackson, to suit 13-2 to 14 hh. A good comfortable sound vehicle



- 20 FOUR-WHEEL DOG CART, built to traditional style by Neil Swanson of Marlborough, circa 1995, to suit 12-2 to 13-2 hh pair or team; finished in dark green, upholstered in beige melton cloth, with black running gear, aluminium body, extending back axle, pole and handbrake. Used for cones and dressage/presentation

- 21 FOUR-WHEEL VEHICLE, built by Neil Swanson of Marlborough, circa 1990, to suit Shetland to 11 hh pony pair; natural varnished bodywork with black running gear, brown vinyl cushions, brake and pole, though pole head is missing. In reasonably smart condition, some touching up of paintwork required. Used with some success in the show ring

- 22 FARM WAGON, with box body, on 39½" and 57" 10 and 12-spoke wheels with full turntable, pair of shafts, rudge chain and drop down tail board, with front board inscribed W.G. Keggin, Yardley Hastings, Northamptonshire.



Partly restored with some new wood in primer

- 23 RALLI CART, to suit 14 to 16 hh; finished in natural varnished wood with black leatherette upholstery, back to back seating and drop down boot

- 24 FLAT CART, to suit 14 to 16 hh; painted finish, on 19" easy clean wheels

- 25 CONTINENTAL SHOOTING PHAETON, finished in natural varnished wood on 12-spoke Warner wheels with all-round disc brakes, spindle back seating, varnished mud guards, wedge driver's seat, wicker umbrella basket and trunk, rear reflectors, foot brake and lamp brackets. To be sold with a pole



26 MILK FLOAT, to suit 14 to 15 hh; finished in natural varnished wood and green mud guards on yellow 14-spoke English pattern wheels with leaf springs, whitemetal rein rail, rear step and shafts



27 GOVERNESS CAR, finished in natural varnished wood, on 14-spoke Warner wheels, cranked axle and elliptic springs, brown upholstery, rein rail and lamp brackets; in smart condition



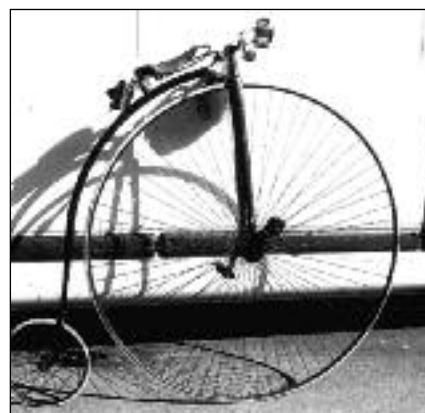
28 CAB FRONTED COUNTRY CART, finished in natural varnished wood, on 16-spoke Warner wheels, cranked axle and leaf springs, metal rein rail, steps, lamp brackets and drop down rear panel; in smart condition



29* VICEROY, to suit 12-2 to 14-2 hh; finished in black with gold lining. A lovely elegant vehicle in smart condition, used for Morgans

30 DOG CART, to suit 15-2 hh; finished in black and green with gold and yellow lining, with louvered sides, on 52" wheels with lancewood shafts trimmed in brown leather and brass fittings. Ready for the show ring

31 PENNY FARTHING, on 52" wheels, some work required



- 32 ROUND BACK GIG, built by William Kinross & Sons of Stirling, to suit 14 to 15 hh; painted black and green with cream lining, with 14-spoke English pattern wheels with brass hub caps and Dennet springs, green upholstery, original leather dash and mud guards, brass whipholder, metal steps and rein rail. A top class show Gig in original condition, ready to go in the ring



- 33 NORFOLK CART, circa 1910, to suit 13 to 13-2 hh pony; finished in natural varnished wood with burgundy and yellow lining, recently re-upholstered in beige Bedford cord, metal rein rail and steps. On 46" wheels with leaf springs, brass hub caps marked Birmingham and Warwickshire Horse Repository and believed to be original. In smart condition



- 34 FRENCH STYLE VICTORIA, possibly Pennsylvania origin, circa 1910/20's, to suit 14-2 to 16-2 hh; finished in green and black, upholstered in deep buttoned back green cloth, pair of lamp brackets and a wicker rear basket and used for many years as a popular wedding carriage. There is an additional page boy/bridesmaid removable seat



- 35 PANEL BOOT VICTORIA, of Continental origin, circa 1890, to suit a 15 to 17 hh pair; fully restored and finished in dark green, with burgundy unders, lined in gold and upholstered in green cloth, on full and three quarter elliptic springs with handbrake, deep leather hood and occasional seat. With a pole, bars and splinter bar



- 36 WAGONETTE, circa 2003, to suit 14-2 hh single or pair; in natural wood and painted with red lining, with pole and brakes. In show condition



- 37 SHOW WAGON, to suit up to 14-2 hh, painted black with red and silver lining on perch with wire wheels, spindle sided seat with upholstered cushion. Fully restored and painted, in show condition



- 38 FOUR-WHEEL INVALID CARRIAGE, circa approx. 1910, to suit 10 to 12 hh pony; finished in green with green upholstery. Paintwork and upholstery need some attention

- 39 TWO-WHEEL NORFOLK RALLI, circa 1890, to suit 12 to 13 hh pony; painted brown with yellow wheels and shafts. Recently restored with new ash shafts and wheels. In show condition



- 40 GOVERNESS CAR, built by Mary Jacob of Gilford, circa 1880, to suit 13 to 15 hh; finished in natural varnished wood with cream shafts and wheels which are 14-spoke English pattern, black metal rein rail and lamp brackets



- 41 RALLI CAR, circa early 1900, to suit 15 to 16 hh; on yellow 54" 16-spoke wheels and bench seat covered in black vinyl. Has been used for showing and driven by a 15-2 hh cob



- 42 SHELBURNE LANDAU, painted black with red undercarriage on 12 and 14-spoke English pattern wheels, hub cap stamped Chandoss Barker & Co., carved dub ends; needs full restoration



- 43 WAGONETTE, on 12 and 14-spoke Warner wheels with iron treads, elliptic springs, needs full restoration



- 44 WAGONETTE, to suit 12-2 to 13-2 hh pony; painted blue with 12-spoke rubber tyred wheels and shafts



- 45 PHAETON, to suit 13 to 14 hh; painted green with light green lining, black undercarriage and 12-spoke Warner wheels on elliptic springs, footbrake, lamp brackets and shafts



- 46 TIP CART, to suit a Shire; finished in red with black lining, 12-spoke Warner wheels with iron treads, shafts and rudge chain



- 47 EXERCISE VEHICLE, built by Andrew Douglas of Grantham, circa 1998, to suit 12-2 to 14-2 single or tandem; painted black with natural varnished wood and cloth upholstery, 10-spoke wheels with brass hub caps, metal steps and rein rail; built to a high standard and newly restored. Successfully shown in pleasure class



- 48 ICE CREAM CART, circa 1925, to suit 14 to 15 hh; body painted white on 14-spoke wheels, with 'Rossi's' painted around the canopy and 'Pure Ice Cream estd. 1912' and 'Award Winning Ice Creams' painted blue on the sides, barley twist supports to the canopy, metal lamp brackets and rein rail



- 49 LONDON VAN, circa 1960, to suit 14 to 14-2 hh; body painted dark blue on red unders all decorated in light blue, red and yellow highlights with a name board inscribed 'General Dealer, Essex', also with footbrake and shafts



- 50 KNACKERS CART, circa 1906, to suit 14 to 15 hh

- 51 LIVERPOOL PICKERING FLOAT, to suit up to 15 hh; finished in natural varnished wood on yellow unders, black upholstery, lamp brackets and rein rail. To be sold with a pair of lamps

- 52 TWO-WHEEL MARKET GARDENERS CART, built by the Bristol Wagon Carriage Co., to suit up to 14-3 hh; finished in natural varnished wood with black upholstery, shafts, lamp brackets and rein rail

- 53 TWO-WHEEL INDIAN OX CART, to suit a pair

- 54 FENIX EXERCISE VEHICLE, to suit 14 to 15 hh; finished in blue

- 55 EXERCISE VEHICLE, built by Supreme Cart, to suit up to 16 hh; in good condition



- 56 CROSS COUNTRY EXERCISE VEHICLE, built by Dartmoor Carriages of Poundsgate, Devon, to suit 12-2 to 14-2 hh; painted black with black vinyl cushion and adjustable shafts; in smart condition

- 57 TWO-WHEEL MARATHON VEHICLE, to suit 12-2 to 14-2 hh; painted maroon with black vinyl cushion on adjustable seat, back step and adjustable wide hipped shafts; in smart condition

**PURCHASERS ARE REMINDED OF THE 7.5% PLUS VAT BUYERS PREMIUM ADDED
TO ALL LOTS IN THE SALE**

CARRIAGE TRAILERS

To follow the carriages

- 121 TRAILER, transport trailer by Brian James
- 122 TRAILER, large braked twin axle box trailer with aluminium paneling and tailgate ramp, approx. 16' long, 6' wide and 7'9 high (overall length 19' approx.)

**PURCHASERS ARE REMINDED OF THE 7.5% PLUS VAT BUYERS PREMIUM ADDED
TO ALL LOTS IN THE SALE**

SETS OF DRIVING HARNESS

Commencing at 9.30 a.m.

Please note that all sets are sold 'as seen' and are NOT guaranteed complete

- | | | | |
|------|---|------|---|
| 151 | Set of brown/whitemetal marathon breastcollar harness to suit PAIR cobs; unused | 172* | Set of miniature Shetland harness |
| 152 | Set of black/brass breastcollar harness to suit PAIR ponies | 173* | Set of PAIR harness |
| 153 | Set of black/patent harness to fit 11 to 13 hh pony | 174* | Set of webbing harness |
| 154 | Set of brown/brass breastcollar harness to fit 13 to 14 hh | 175* | Set of cob harness |
| 155 | Set of pony size webbing harness with leather pad top and dock, cupped winkers and soft web reins made by <i>R.H. Steinke</i> ; new | 176 | Set of English black Shire show harness; in excellent condition and show quality |
| 156 | Set of cob size webbing harness with leather pad top and dock, cupped winkers and soft web reins made by <i>R.H. Steinke</i> ; new | 177 | Set of English black show breastcollar harness to fit 15 hh, plus a swan collar |
| 157 | Set of brown cob harness | 178 | Set of English black/patent show harness to fit 13 to 14 hh |
| 158 | Set of Shetland pony harness | 179 | Set of brown full size harness |
| 159 | Set of pony harness | 180 | Set of full size webbing harness |
| 160 | Set of full size harness | 181 | Set of brown pony harness |
| 161 | Set of webbing harness to fit a cob | 182 | Set of black cob harness |
| 162 | Set of harness to fit a 11-1 to 12 hh welsh pony | 183 | Set of brown PAIR harness to fit cobs |
| 163 | Part set of brown harness with breastplate, crupper and traces | 184 | Set of leather/rawhide PAIR harness made by <i>John Willie</i> to fit 11-2 to 12-1 hh ponies currently set up as 'criss-cross' but could easily have pads and crupper re-fitted, reins but no bridles |
| 164 | Set of black/whitemetal luxury marathon breastcollar PAIR harness made by <i>Ideal</i> to fit 10 hh Shetland ponies, including pole straps; in good condition | 185 | Set of black full size harness |
| 165 | Set of black/patent/whitemetal breastcollar harness to suit a 10 hh Shetland pony, no reins; in good condition | 186 | Set of black Shetland pony harness |
| 166 | Set of good quality brown/brass Shetland harness | 187 | Set of brown cob harness |
| 167 | Set of black/whitemetal webbing harness to fit a cob; unused | 188 | Set of webbing harness to fit a Shetland pony |
| 168 | Set of black/patent/brass show breastcollar harness made by <i>Zilco</i> to suit a small pony or Shetland | 189 | Set of webbing harness to fit a pony |
| 169* | Set of cob harness | 190 | Set of wipe-clean <i>Plas Equestrian</i> TEAM harness to suit Shetland to 13 hh ponies; in good condition and complete |
| 170* | Set of pony harness | 191 | Set of black pony PAIR harness; no reins |
| 171* | Set of brown/brass harness | 192 | Part set of nylon webbing pony PAIR harness; no bridles |
| | | 193 | Set of rawhide harness by <i>John Willie Saddle Rooms</i> to suit 11-2 to 12-2 hh pony; in good condition |
| | | 194* | Set of black/tan PAIR harness with breastcollar |
| | | 195* | Set of harness |
| | | 196* | Set of full size harness |
| | | 197* | Set of brown/brass harness |
| | | 198* | Set of Trade harness |
| | | 199* | Set of PAIR harness |
| | | 200* | Set of cob harness |
| | | 201 | Set of black/whitemetal PAIR harness to fit up to 13-2 hh, German made, complete with reins; used once |

- 202 Set of black full size synthetic PAIR harness; new
- 203 Set of black full size synthetic PAIR harness; new
- 204 Set of black/whitemetal full size PAIR harness
- 205* Set of exercise PAIR harness
- 206 Set of black harness with 18½" collar to suit 12-2 to 13-2 hh pony, with bridle, reins and traces
- 207 Set of brown breastcollar harness to fit 15-2 to 16-2 hh
- 208 Set of black/brass Gig breastcollar harness made by *J. Stockbridge* to fit 10 to 12 hh pony
- 209 Set of black/brass Gig breastcollar harness made by *J. Stockbridge* to fit 14 to 15 hh
- 210 Set of black/whitemetal breastcollar harness to fit 12 to 14 hh
- 211 Set of black/brass breastcollar harness to fit 10 to 12 hh pony
- 212 Set of black/brass breastcollar harness to fit 10 to 12 hh pony
- 213 Set of black/brass/nylon harness to fit 10 to 12 hh pony; new
- 214 Set of black/brass/nylon harness to fit 10 to 12 hh pony; new
- 215 Set of brown/whitemetal breastcollar harness to fit 12 to 14 hh
- 216 Set of black/brass breastcollar harness to fit 8 to 10 hh pony; new
- 217 Set of black/whitemetal harness to fit 15 to 16 hh cob
- 218 Set of black/whitemetal harness to fit a 13-2 to 14-2 hh pony
- 219 Set of black/patent/brass harness with 20" collar, bridle, pad, tugs, crupper and breeching and brown padded reins
- 220 Set of black/brass breastcollar harness with false breeching by *Bridleways of Guildford*, to suit 10 to 12 hh pony
- 221 A very unusual set of brown/brass pony/cob size harness, incomplete but with embossed bridle with the letter 'C' on blinkers, brass brow band and a saddle with a brass bell and breeching
- 222 Set of brown harness to suit a pony or cob
- 223 Set of brown harness to suit a small pony
- 224 Set of trade harness to fit 14-2 to 15-2 hh cob; in excellent condition
- 225 Set of cob size harness with horseshoe buckles; as new condition
- 226 Set of brown harness for 14-2 to 15-2 hh cob; used once
- 227 Set of black full size PAIR harness with trunk

Please note that all sets are sold 'as seen' and are NOT guaranteed complete

**THE LAST TWO
HORSE & SADDLERY SALES
FOR 2010
Fridays - 3rd September and
1st October**

**PLEASE CONTACT THE OFFICE FOR AN ENTRY
FORM OR DOWNLOAD ONE FROM OUR
WEB SITE – www.tsauktion.co.uk**

CARRIAGE PARTS

Commencing at 10.00 a.m.

- | | | | |
|-----|--|------|--|
| 271 | Horse-drawn seed drill by <i>J.C. & T. Yates of Doncaster</i> , on metal wheels with two rollers; in good order requires re-painting to bring back to show condition | 307 | Roll of rubber matting |
| 272 | <i>New Era</i> horse-drawn seed drill by <i>S. Corbett & Sons, Wellington, Salop</i> and a horse harrow; in working order | 308 | Scorpion catches, etc |
| 273 | Tandem spreader bar in good condition; has been used in the show ring | 309 | Old brass hub caps |
| 274 | Pair of rough sawn ash shafts | 310 | Chrome whipholder and rails |
| 275 | Set of four 19" tyres to suit a London Trolley | 311 | Quantity of brassware for shafts |
| 276 | Pair of chrome shaft ends | 312 | Quantity of brassware for shafts |
| 277 | Chrome whipholder | 313 | Pair of springs and hangers from a Milk Float |
| 278 | Four 19" trolley tyres; new | 314 | Set of four 19" tyres to suit a London Trolley |
| 279 | Lock for a London trolley | 315* | Stainless steel pole head |
| 280 | Quantity of carriage parts | 316* | Set of brass shaft fittings |
| 281 | Rear carriage step | 317* | Brass whipholder |
| 282 | Wooden swingletree | 318* | Brass foot rest |
| 283 | Carriage jack | 319* | Whitemetal rein rail |
| 284 | Pair of lamp brackets | 320* | Whitemetal whipholder |
| 285 | Pair of lamp brackets | 321* | Set of adjustable brass shaft fittings |
| 286 | Single lamp bracket | 322* | Stainless steel pole head |
| 287 | Complete set of brass shaft furniture | 323* | Lamp brackets |
| 288 | Set of four 19" tyres to suit a London Trolley | 324* | Lamp brackets |
| 289 | Pair of good quality lancewood Gig shafts | 325* | Pair shaft points |
| 290 | Roll of rubber matting | 326* | Sundry carriage parts |
| 291 | Three step treads; new | 327* | Rein rail |
| 292 | Quantity of lamp brackets; new | 328* | Stainless steel foot rest |
| 293 | Quantity of 'U' bolts; new | 329* | Pair of 46" wooden carriage wheels |
| 294 | Quantity of spring hangers; new | 330* | Five swingletrees |
| 295 | Quantity of coach bolts; new | 331* | Pair of steps |
| 296 | Pair of good quality shafts | 332* | Three carriage poles |
| 297 | Three step treads; new | 333* | Pair of hickory shafts |
| 298 | Quantity of old metal work for shafts | 334 | Three-stud London Trolley wheel and tyre, 500 x 19 |
| 299 | Pair of heavy brass round shaft tips | 335 | Pair of <i>Avon</i> 350 x 119 Trolley tyres |
| 300 | Pair of heavy brass square shaft tips | 336 | Pair of <i>Dunlop</i> 350 x 19 Trolley tyres |
| 301 | Quantity of brassware for shafts | 337 | Trolley tyre, <i>Dunlop</i> 350 x 19 |
| 302 | Chrome rein rail | 338 | Pair of trace hooks |
| 303 | Quantity of brass carriage handles, etc | 339 | Set of brass shaft fittings |
| 304 | Hydraulic pipe bender | 340 | Set of brass shaft fittings |
| 305 | Quantity of shaft fittings | 341 | Set of brass shaft fittings |
| 306 | Quantity of 'U' bolts | 342 | Set of brass shaft fittings |
| | | 343 | Quantity of shaft tips |
| | | 344 | Twenty brass wheel nuts for a Trolley |
| | | 345 | Box of decorative brass fittings |
| | | 346 | Brass handles and catches |
| | | 347 | Set of four 19" tyres to suit a London Trolley |
| | | 348 | Set of wooden shafts |
| | | 349 | Set of wooden shafts |

350	Wooden pole for a four-wheel carriage	391*	Whipholder
351	Splinter bar for a four-wheel carriage	392*	Carriage parts
352	Seasoned ash planks	393*	Set brass shaft fittings
353	Old rein rail for a single carriage	394*	Pair of lamp holders
354	Metal pole for a four-wheel Exercise carriage	395*	Pair of trace hooks pair adjustable tug stops
355	Old metal swingletree and tandem bar	396*	Pair of brass shaft points
356	Set of four 19" tyres to suit a London Trolley	397*	Brass foot rest
357	Assorted ironwork including wheels, springs and a cranked axle removed from a two-wheel Milk Float, hub caps marked <i>Batchelors of Kingston Hill</i>	398*	Pair of lamp holders
358	24 volt electric carriage winch; as new	399*	Stainless steel back chain
359	Silver pole head	400*	Pair stainless steel plough chains
360	Set of four 19" tyres to suit a London Trolley	401*	Pair stainless steel plough chains
361	Two three-pin artillery wheel rims	402*	Pair of cotton plough lines
362	Pair of 4' long springs and overcheck spring	403	Pole for pair ponies
363	Set of four 19" Trolley wheels	404	Pair of trace spreaders
364	Carriage seat	405	Pair of hook shafts for ponies
365	Assorted cart parts	406	Splinter bar
366	Three-stud artillery wheel rim	407	Set of wooden bars
367	Set of four 19" Trolley tyres	408	Set of wooden bars
368	Brass pole head	409	Spring shackles
369*	Brass shaft fittings	410	Spring shackles
370*	Brass foot rest	411	Set of green ash shafts with swingletree
371*	Brass whipholder	412	Set of red heavy horse shafts
372*	Pair of adjustable tug stops	413	Roll of rubber matting
373*	Pair of breeching 'D's	414	Pair of amber carriage handles
374*	Shaft fittings	415	Set of amber door knobs
375*	Pair of stainless steel quick release snaps	416	Pair of three-stud Trolley wheels
376*	Pair of stainless steel quick release snaps	417	Adjustable lamp bracket for a trade van
377*	Sundry carriage parts	418	Pair of small elliptic springs
378*	Pair of shaft points	419	The <i>Eclipse</i> adjustable hub cap spanner
379*	Lamp brackets	420	Splinter bar
380*	Brass foot rest	421	Carriage lock/turntable with steps
381*	Adjustable shaft fittings	422	Pair of double steps with wheel arch brackets
382*	Whipholder	423	Black metal rein rail, 38"
383	Whitemetal rein rail	424	Black metal double carriage seat rail
384	Brass shaft fittings	425	Black metal double carriage seat rail
385	Whitemetal shaft fittings	426	Pair of double shafts
386	Brass shaft fittings	427	Heavy horse swingletrees
387	Brass whipholder	428	Three swingletrees
388	Whitemetal shaft fittings	429	Three assorted swingletrees
389	Brass whipholder	430	Spreader bar with three swingletrees for three abreast horses
390	Horse and bell	431	Pair of 59" 16-spoke carriage wheels with axle, hub caps and locking nuts; as new
		432	Set of 'U' bolts, 3"

- 433 Set of 'U' bolts, 2½"
- 434 Set of 'U' bolts, 3"
- 435 Metal swingletree for a Gig
- 436 Set of spring hangers
- 437 Set of spring hangers
- 438 Axle for a trap
- 439 Framework for a seat
- 440 Pair of trace hooks
- 441 Body of a Well Bottom Gig with shafts, wicker back and sides; for restoration or spares
- 442 Assorted ironwork for a Gig
- 443 Roll of tyre rubber, 1¼"
- 444 Pair of elliptic springs
- 445 Small turntable
- 446 Pair of wheels and axles, 60"
- 447 Pair of wheels, 48"
- 448 Set of channels, 60"
- 449 Pair of springs
- 450 Pair of small wheels
- 451 Pair of springs
- 452 Two pairs of wheels; in need of repair
- 453 Assorted ironwork for a Gig
- 454 Four wheels and two poles
- 455 Carriage jack
- 456 Channel for wheels
- 457 Pair of double steps
- 458 Assorted steps
- 459 Boxing for wheels
- 460 Turntable for a four-wheel vehicle
- 461 Assorted ironwork for a Liverpool Gig
- 462 Set of small wheels
- 463 Old machine for putting rubber on wheels
- 464 Assorted ironwork for a Gig
- 465 Box of hub caps
- 466 Pair of wheels
- 467 Assorted ironwork
- 468 Brass pole end
- 469 Set of brass shaft fittings
- 470 Brass foot rest
- 471 Set of 13" spindles
- 472 Brass fittings
- 473 Rein rails
- 474 Leather cushion straps
- 475 Boxed drivers seat and fittings
- 476 Pair of springs
- 477 Set of leather dashboards
- 478 Coach handles
- 479 Brass fittings
- 480 Brass shaft fittings
- 481 Box of brass pieces
- 482 Pair of pony shafts
- 483 Old machine for bending channels
- 484 Pair of wheels
- 485 Small pair of wheels
- 486 Step for a Gig
- 487 Step for a four-wheel vehicle
- 488 Assorted ironwork
- 489 Two pairs of springs
- 490 Brass foot rest
- 491 Pole with brass end
- 492 Iron hood
- 493 Upholstery material
- 494 Set of breeching staples
- 495 Brass shaft ends
- 496 Assorted carriage parts
- 497 Hangers for springs
- 498 Box of hub caps
- 499 Box of nuts and 'D's
- 500 Two sets of carriage wheels; in need of repair
- 501 Boxing and axles
- 502 Gig seat complete with cushion and back rest
- 503 Farmhouse cheese mill, for milling cheese curds prior to truckling and pressing
- 504 Corn crusher by *The Bentall Mill Company of Heybridge, England* with 3" rollers
- 505 Set of four 19" tyres to suit a London Trolley
- The following ten lots 506 to 515 comprise of*
- 506 Old joinery and carpenter's tools and equipment, smoothing and moulding planes, including *Stanley Universal No. 55* with two boxes of spare blades, saws, hammers and chisels and files, plus an assortment of other craftsmen's tools
- 516 30's *New Hudson* tandem with two *Brooks Competition* leather saddles, dynamo, headlight and bell. Wheels and pedals are later

SUNDRY HARNESS & ACCOUTREMENTS

Commencing at 9.30 a.m.

- 551 Pair of original carriage lamps
- 552 Holly show whip with reel mounted on a board
- 553 Assorted quantity of harness racks
- 554 Very large porters sack barrel
- 555 Brown/brass cob size driving saddle and crupper and breeching
- 556 Two brown/brass breastcollars and martingales
- 557 Black/brass pony size driving saddle and three black breechings
- 558 Brown/brass driving saddle and crupper
- 559 Black/brass full size pole straps
- 560 Brown/brass pony saddle and martingale
- 561 Two pairs of single leather reins
- 562 Two pairs of black/whitemetal cob size pair reins
- 563 Gentleman's hunting crop
- 564 Dealer's whip
- 565 Hunt servant's whip
- 566 Gentleman's cane
- 567 Small brass milk pails
- 568 Tie-up halter and bobbins
- 569 Liverpool bit
- 570 Liverpool bit, 6"
- 571 Liverpool bit, 5"
- 572 Military bit, 6"
- 573 Child's whip with a horn handle carved into the shape of a hoof
- 574 Gent's hunting whip with bone handle, silver hallmarked ferrule engraved, *D.A.K. From I.B. 1933*, leather covered stock, leather keeper and plaited thong, total length 62" approx.
- 575 Black *Raydyot* patent carriage lamp with carrying handle
- 576 Pair of shaft covers
- 577 Pair of shaft covers
- 578 Pair of lamp bags
- 579 Shower-proof driving cape
- 580 21" patent leather collar by *Huskissons of Walsall*, new
- 581 WWI cavalry officer's whip, along with a newspaper cutting (*view in security pen*)
- 582 Riding crop with silver butt cap dated 1881 and engraved, '*L.R.B. Greenacre*' (*view in security pen*)
- 583 Riding crop engraved, '*M.C.G. from Sealy, Aug 24th 1911*' (*view in security pen*)
- 584 Riding crop by *Zaire*, made in England (*view in security pen*)
- 585 Fine quality silk top hat, size 7, made by *Dunn & Co., Strand, London* with original box
- 586 Pair of brass oval fronted carriage lamps (*view in security pen*)
- 587 Gent's leather travel toiletry case
- 588 Blue stove from a Gypsy Wagon
- 589 Liverpool bit with curb chain, 5½"
- 590 Two antique oval fronted brass carriage lamps; damaged
- 591 Dog leg holly twist driving whip, length 101"
- 592 Show collar with hames and tugs, 18½"
- 593 In-hand leather bound driving whip with brass butt cap by *Swaine & Adeney*
- 594 Dog leg whip
- 595 Cane whip
- 596 Driving whip
- 597 Two modern carriage lamps
- 598 Pair of large blacksmiths' bellows
- 599 Brass coaching horn
- 600 Leather trade money bag
- 601 Three wicker baskets to suit a country turn out
- 602 Pair of black/brass false breeching
- 603 Pair of wooden tying up chocks
- 604 Pair of wooden tying up chocks
- 605 Pair of black/brass leather trace ends
- 606 Assortment of bits and leather breeching
- 607 Black/patent show collar, 19"



- 608 Black/patent show collar, 20"
- 609 Copper coaching horn
- 610 Pair of chrome hames
- 611 Rear brass carriage lamp made by *Alfred Hales*
- 612 Three copper measuring jugs
- 613 Copper coaching horn
- 614 Leather travelling case
- 615 Leather money bag
- 616 Black flock leather collar, 21"
- 617 Pair of bridles and a pair of hames
- 618 Box of harness pieces
- 619 Copper milk churn, 1 gallon
- 620 Four harness racks
- 621 Four horse lawn shoes
- 622 Old sign: *Horse-Drawn Vehicles and Animals This Way*
- 623 Black flock trade collar, 18"
- 624 Brown collar, 18"
- 625 Brown flock collar
- 626 Brown collar, 16"
- 627 Black/brown collar, 20"
- The following 4 lots, 628 to 631, are all new and made by Robert H. Steinke*
- 628 Brown patent leather spares case
- 629 Black/brass hame strap for farm harness collar
- 630 Red patent leather face drop for farm bridle
- 631 Black patent leather face drop and brow band for a farm bridle
- 632 Pair of square fronted brass carriage lamps
- 633 Pair of whitemetal lamps
- 634 Holly whip with leather handle and brass butt cap mounted on a board; in show condition
- 635 Pair of brown pigskin buskins with laces and hooks, to fit 14" calf
- 636 Ring spanner for a Collinge axle
- 637 Pair of original black/brass square carriage lamps with circular tops and bevelled glass; in very good condition
- 638 An original rear black/brass carriage lamp with oval carrying handle; in very good condition
- 639 Saddler's awl with bits contained within wooden handle
- 640 Saddler's knife
- 641 Heavy horse leather with six brasses
- 642 Brown pony breastcollar
- 643 Black pony traces
- 644 Copper/brass tandem horn by a London maker
- 645 Copper/brass tandem horn by a Birmingham maker
- 646 Three full size neck straps
- 647 Dealer's whip by *Crawley & Son, Peterborough*
- 648 Driving whip; new
- 649 Wooden harness stand
- 650 Three pairs of heavy horse hames
- 651 Two whip sticks
- 652 Shire bridle with bit
- 653 Two heavy horse pads with brass mounts and a heavy horse bridle
- 654 Pony bridle
- 655 Top hat box
- 656 Leather heavy horse rein with twenty four brass ornaments, buckle, chain and a leather heavy horse side rein with seventeen brass ornaments with buckle and ring
- 657 Thumb stick signed, *F.H.Unwin* and stamped *U*, from the late Fred Unwin's Collection
- 658 Rare antique horse cradle with leather straps
- 659 Lady's side saddle cane
- 660 Solid brass horse drencher with attachment, 9½" long, 3" wide
- 661 Two-pronged pitch fork; as new
- 662 Two-pronged pitch fork; as new
- 663 Two wide plastic stable shovels
- 664 Two wide plastic stable shovels
- 665 Heavy horse pad, breeching and bridle; formerly the property of *E. Barker, Market Gardners of Datchet*
- 666 Pair of Landau lamps by *J. Marston of Birmingham*
- 667 Pair of Brougham lamps in a box
- 668 Two pairs of ear muffs and a fly face protector
- 669 Set of lining brushes in a box

- 670 Foot-operated wet or dry sharpening machine
- 671 Five hame straps and bearing rein
- 672 Pair of carriage lamp brackets
- 673 Three lamp brackets
- 674 Holly dog-leg driving whip
- 675 Leather saddle with brass fittings
- 676 Cob size bridle by *Zilco Classic*; new and never used
- 677 Pair of brass trim Coach lamps
- 678 Set of cob size shoes
- 679 Holly whip by *Schomberg* with ivory handle, gold butt cap and ferrule, engraved with *CRMB* on the ferrule
- 680 Black/patent/brass driving bridle to suit a 14 hh pony
- 681 Brass horn, 3'9
- 682 Old leather Shire headcollar
- 683 A driving marathon hat in blue/black, adjustable; as new
- 684 Set of harness racks
- 685 Black/whitemetal *Hartlands* number holder; as new
- 686 Black/whitemetal *Hartlands* spares kit, complete; as new
- 687 Black/brass under-halter to suit a small pony
- 688 Navy pony size driving rug; never used
- 689 Tandem roller pad, terrets and spoons
- 690 Pony butterfly bit, 5"
- 691 Pony butterfly bit, 5"
- 692 Rein handling teaching aid
- 693 Two whips; in good condition
- 694 Whitemetal team/tandem rein clamp
- 695 Blue melton driving rug edged in red piping
- 696 Pair pony size trace quick release shackles
- 697 Pair cob size trace quick release shackles
- 698 Quick release breeching/crupper shackle
- 699 Pair of black/whitemetal carriage lamps; as new
- 700 Set of Christmas outfits for a pair of small ponies and their driver
- 701 Three hats suitable for driving/showing, sizes 7 – 7 1/8
- 702 Set of exercise markers
- 703 *Beugler* lining-out tool and paint
- 704 Quantity of spurs
- 705 Quantity of spurs
- 706 Leather cavesson
- 707 Heavy horse headcollar and reins
- 708 Set of horse plumes with bells
- 709 Quantity of bits
- 710 Hunting whip with spare thong and horn
- 711 Pair of brass hooks with ceramic horse scene
- 712 Black knee length livery coat with brass buttons
- 713 Four woollen horse blankets in good condition
- 714 Set of lining brushes
- 715 Set of antique Victorian harness racks and hooks
- 716 Bridle and collar harness racks by *Stubbs*
- 717 Assorted trace ends
- 718 Three wall mounted metal hay racks
- 719 Anvil
- 720 Dealer's whip
- 721 Dealer's whip
- 722 Huntsman's whip
- 723 Side saddle whip
- 724 Dealer's whip
- 725 Side saddle whip
- 726 Pair of leather saddle bags
- 727 Old carriage railway lamp
- 728 Old Victorian coach lamp
- 729 Quantity of chains
- 730 Set of aluminium skids; new
- 731 Box of aluminium horseshoes; new
- 732 Pair of shaft covers
- 733 Pair of shaft covers
- 734 Pair of lamp bags
- 735 Shower-proof driving cape
- 736 Black livery jacket with brass buttons
- 737 Driving apron
- 738 Two black full size bridles
- 739 Black/patent collar, 23"
- 740* Set of tandem rains; unused

- 741 A mahogany whip board for a jointed coach whip, stamped on reverse *Callow, Park Lane, London*
- 742 A fine quality whip box for carrying six carriage whips, the interior lined with blue velvet and fitted with six spring-loaded 'butterfly' clips each with finely stitched leather protective covers, the box is varnished red pine, fitted brass lock and key. Overall length 7'3; all in fine original condition
- 743 A good quality large cylindrical brass trim carriage lamp by *G. Billy, Paris* with silver plated interior. Overall length 26"; excellent condition overall
- 744 An excellent quality copper and German silver coach horn stamped *Kohler & Son, Makers, GT. Chapel St. Westminster (From Covent Garden)*, complete with original leather case; all in excellent condition
- 745 A brass coach horn by *A. Collins, 181 Shaftsbury Ave., London* with original mouthpiece. Overall length 48"
- 746 A rare pocket horse measure in original leather case. The brass measure and weight by *J. Rabone & Sons, Birmingham*. The folding boxwood levelling arm stamped *Cooper W. Jones & Co., Patent No. 13268*. The leather case stamped *Hennig & Co, 26 Coventry St., W., Makers*. Overall length 9" approx.
- 747 A very unusual original black patent leather carriage whipholder with a brass shield stamped '*Paragon Patent No. 11288. August 18th 1887*' to the rear. The front with brass royal armorial for Queen Victoria. The top fitted with silver plated bell opening 2¾" in dia., complete with original bracket; good condition
- 748 A good quality leather hunt horn case with saddle fitting and loop top, by *Army & Navy, London*. Overall length 10"
- 749 A black japanned folding interior carriage lamp with nickel silver stem and silver plated interior, oval shaped body, complete with foldaway suspension hooks
- 750 A pair of round fronted carriage lamps, side glasses engraved with thistle decoration
- 751 A pair of decorative wooden whip and stick racks, the hooks formed from antler points
- 752 A mahogany horseshoe-shaped wall mounted top hat/bowler rack with five double brass hooks
- 753 A mahogany boot jack standard
- 754 A pair of Newmarket boots with trees
- 755 A pair of black riding boots with trees
- 756 A pair of boot pulls in a fitted mahogany case
- 757 A fine quality walking stick with a carved handle in the form of a dog's head
- 758 A leather cartridge magazine by *James Dixon* with various shot gun accessories, 19" wide approx.
- 759 A leg o' mutton leather gun case
- 760 An all leather riding crop with nickel ferrule and stags horn hook handle
- 761 A selection of eight good quality leather top hat boxes of various types and patterns; all in good condition to be sold separately (**8 lots, 761-768**)
- 769 A selection of five black top hats of various sizes, to be sold separately (**5 lots, 769-773**)
- 774 A selection of four black bowler hats of various sizes, to be sold separately (**4 lots, 774-777**)
- 778 An old style straw boater suitable for a trade turnout
- 779 A grey top hat
- 780 An original gold trimmed livery top hat
- 781 A good quality leather letter pouch
- 782 Gent's hunting crop, leather grip and double silver fittings (*view in security pen*)
- 783 Ladies hunting crop, leather plaited shaft and thong (*view in security pen*)
- 784 Gent's hunting crop, leather plaited shaft and silver fittings (*view in security pen*)
- 785 Unusual gent's hunting crop with horn top in the shape of a horse's hoof with ebony shaft (*view in security pen*)
- 786 Gent's hunting crop, leather grip and silver fittings (*view in security pen*)
- 787 Nickel silver hand warmer (*view in security pen*)
- 788 Cast iron harness wall bracket with ornate horse scenes
- 789 Cast iron harness wall bracket with ornate horse scenes

- 790 'D' shaped sandwich case and flask by *Drew of London* in a leather holder to attach to a saddle (*view in security pen*)
- 791 Tapered glass flask in a leather holder to attach to a saddle (*view in security pen*)
- 792 Oak and brass bound stable yard bucket by *Listers*
- 793 Packhorse saddle with metal fittings and hook brackets by a London maker
- 794 Ladies side saddle by *Parker & Sons*
- 795 Pair of brass collar hames
- 796 Light tan horse collar
- 797 Pair of carriage lamps with horseshoe shaped glass and brass fittings (*view in security pen*)
- 798 Single carriage lamp with bow glass and cut glass side panels (*view in security pen*)
- 799 Very large coachman's top hat with gold braiding and plume by *S. Patey, London* (*view in security pen*)
- 800 Black carriage apron with leather straps
- 801 Pair of oak whip racks with antler fittings
- 802 Large grey bowler hat and box by *Lock of London* (*view in security pen*)
- 803 Early wooden 19thc saddle ailer
- 804 Large lined wicker basket for storing tack
- 805 Bone handled hunt crop
- 806 Hunt crop
- 807 Hunt crop
- 808 Hunt crop
- 809 Two horn cases
- 810 Whip rack
- 811 Spirit flask in leather holster
- 812 Sandwich case in leather case
- 813 Sandwich case in leather case
- 814 Stand up boot jack
- 815 Three pairs of 'elephant ear' breeches
- 816 Black boots with trees
- 817 Large stable measuring standard
- 818 Ornate spur
- 819 Ornate spur
- 820 Heavy mail pattern coach horn by *Army & Navy*, with strengthening ribs
- 821 Coach horn by *Kohler*
- 822 Whip board with nine whip reels by *Callow of London*, 7' long
- 823 Coaching horn with wicker case presented by *W. Palk, MP to Sam Tracey* on the Quicksilver Coach, London to Exeter
- 824 Tandem horn by *Army & Navy*
- 825 Leather case for a coaching horn
- 826 Side saddle slipper stirrup
- 827 Bearing rein holders
- 828 Pagoda top carriage lamps; unused, no barrels
- 829 Large carriage lamp
- 830 Single carriage lamp
- 831 Holly whip for a coach
- 832 Holly whip by *Swaine*
- 833 Whip socket
- 834 Whip reel
- 835 Holly whip with ivory handle
- 836 Jointed holly whip by *Whippy of London*
- 837 Interior carriage lamp
- 838 Adjustable harness crane
- 839 Saddle rack by *Musgrave*
- 840 Saddle rack by *Musgrave*
- 841 Harness rack by *Musgrave*
- 842 Harness rack by *Musgrave*
- 843 Wooden capped saddle rack
- 844 Wooden capped harness racks
- 845 Brown woollen driving apron
- 846 Moss green woollen driving apron
- 847 Grey quilted cotton driving apron
- 848 Beige/check cotton driving apron
- 849 Brown woollen driving apron with cotton lining
- 850 Green lightweight shower-proof driving apron
- 851 Pair of black/brass carriage lamps for a pony turnout
- 852 Set of rawhide traces with eye fittings for a single pony approx. 11-2 hh, 55" long x 1" wide
- 853 Crupper and anti-pull leather noseband attachment to fit 11-2 hh pony approx.
- 854 Leather driving bridle made by *John Willie* to fit approx. 11-2 to 12-2 hh pony
- 855 Tan cotton driving apron with check lining
- 856 Pair of black boots, size 11
- 857 Wooden boot puller

- 858 Large leather crupper
- 859 Pair of large leather cruppers
- 860 Water-proof blanket
- 861 Pair of lamp brackets
- 862 Leather number holder
- 863 Air bed for a groom
- 864 Pair of army tracers
- 865 Lunge line
- 866 Set of *Musgrave* harness racks
- 867 Set of *Musgrave* harness racks
- 868 Large black bowler hat
- 869 Large grey top hat
- 870 Skull cap, size 7¾
- 871 Shaft covers
- 872 Black/patent collar, 19"
- 873 Black/patent collar, 23"
- 874 Holly whip with leather handle
- 875 Pair of brass Gig lamps
- 876 Pair of brass Gig lamps
- 877 Pair of brass trim Phaeton lamps by *Slack Bros., Manchester*
- 878 Copper mail pattern coach horn with brass ribs and mouthpieces, 48"
- 879 Copper coach horn, 37"
- 880 Four thick black leather straps
- 881 Black leather padded strap
- 882 Shire horse martingale and buckles
- 883 Shire horse martingale
- 884 Black leather padded strap with buckle
- 885 Black leather strap with buckle
- 886 Brass ploughing stand
- 887 Box of assorted saddlery brackets, one with plaque *Millfield Supplies, Stetchworth, Tel. 210, Nr NEWMARKET*
- 888 Brown trilby by *Herbert Johnson*
- 889 Grey top hat, size 7¾
- 890 Grey top hat, size 7½
- 891 Silk top hat
- 892 Silk top hat
- 893 Silk top hat
- 894 Leather hat box
- 895 Ladies dressage hat
- 896 Ladies showing hat
- 897 Driving bridle
- 898 Buxton bit
- 899 Buxton bit
- 900 Show cane
- 901 Drop thong whip
- 902 Driving whip
- 903 Driving whip
- 904 Driving whip
- 905 Full collar
- 906 Painted milk churn depicting a gypsy scene
- 907 Painted milk churn depicting a wildlife scene
- 908 Pair of brass fire irons
- 909 Copper churn
- 910 Box of old sundry harness
- 911* Driving collar
- 912* Driving apron
- 913* Driving whip
- 914* Pair of Buxton bits
- 915* Liverpool bit with roller
- 916* Pair of lamps
- 917* Rear lamp
- 918* Full size brollar
- 919* Cob size brollar
- 920* Measuring stick
- 921* Leather plaited bow top driving thong
- 922* Leather plaited bow top driving thong
- 923* Leather plaited bow top driving thong
- 924* Driving collar
- 925* Driving breastcollar
- 926* Pair of Liverpool bits
- 927* Driving whip
- 928* Pair of carriage lamps
- 929* Four harness bells
- 930* Set brown pair horse driving reins
- 931* Copper and brass singeing lamp by *TE Bladon & Son*
- 932* Driving bridle
- 933* Pair traces
- 934* Two pairs of driving gloves
- 935* Driving pad
- 936* Driving apron
- 937* Carriage number holder

938*	Two fleece harness pads	980	Decorative bit
939*	Pair of horse breechings	981	Two ring bits
940*	Pair of trap lamps	982	Lamp holder and box for a rear lamp
941*	Pair of lamps	983	Brass hames complete with tugs
942	Driving bridle to fit a cob	984	Dumb jockey
943	Driving bridle to fit a pony	985	Patent collar, 22"
944	Driving reins	986	Collar, 17"
945	Measuring stick	987	Patent collar
946	Driving whip	988	Pair of black boots
947	Driving whip	989	Patent mouth gag
948	Stainless steel Liverpool bit	990	Two steel mouthing bits
949	Breaking roller	991	Collection of assorted bits
950	Pair of long reins	992	Stainless steel Liverpool bit, 5¼"
951	Set of cob pair reins	993	Leather covered driving bit
952	Rubber mouth Liverpool bit	994	Brass Liverpool bit with crown cheeks
953	Two whip lashes	995	Two driving bits
954	Liverpool bit	996	Ear bridle and bit
955	Horse and bell	997	Collection of assorted stirrups
956	Small driving whip	998	Side release stirrups
957	Carriage lamps	999	Tandem pad
958	Liverpool bit with port and rollers	1000	Pairs pad
959	Two harness pads	1001	Crupper docks and patent winkers
960	Butterfly bit	1002	Two patent face pieces
961	Wicker basket	1003	Pair of patent cheek guards
962	Wilson snaffle with horseshoe rings	1004	Pair of strap hangers for a Coach
963	Set of pony pair reins	1005	Pair of whitemetal carriage lamps
964	Horn	1006	Hunt flask with leather case
965	Driving bridle	1007	Leather hunt flask case containing glass bottle
966	Breastcollar and traces	1008	Liverpool driving bit
967	Patterns for harness racks	1009	Driving bit
968	Lamp for a Fire Engine by <i>Shand Mason</i>	1010	Assorted bits
969	Trap lamps	1011	Assorted leather items
970	Pair of square fronted carriage lamps	1012	Driving bit
971	Patent collar, 22"	1013	Four black metal bridle hangers with brass horseshoe design
972	Patent collar, 18"	1014	Set of brass harness bells
973	Patent collar, 19"	1015	Vintage sweat scraper
974	Chain muzzle for a horse	1016	Bridle hook
975	Military saddle	1017	Military items
976	Hunting crop	1018	American driving whip with weighted end
977	Hunting crop	1019	Set of harness racks
978	Gent's whip		
979	Decorative bit		

- 1020 Rare Liverpool bit with 2" high port, moveable sides, 5⁷/₈"
- 1021* Two crew punches
- 1022* Large round punches
- 1023* Two saddler's press punch machines
- 1024* Quantity of round punches
- 1025* Smasher
- 1026* Saddler's race
- 1027* Saddler's tool
- 1028* Assorted saddler's fittings
- 1029* Assorted saddler's tools
- 1030* Saddler's knife
- 1031* Box loop tools
- 1032 A good selection of eleven various hunt crops, riding whips, etc.; all in good condition, to be sold separately **(11 lots, 1032-1042)**
- 1043 A pair of mahogany handled boot pulls
- 1044 A pair of burnished steel boot pulls
- 1045 A pair of bone handled boot pulls
- 1046 A leather sandwich box case with saddle fittings; no contents
- 1047 A Britannia metal sandwich box
- 1048 A good quality ladies side saddle whip with plaited whalebone handle and ornate silver butt cap and ferrule
- 1049 A ladies side saddle whip with plaited thread handle, bone hook and two silvered decorative ferrules
- 1050 A rare Jockey's licence, dated 1904
- 1051 A good quality saddler's lignum vitae smasher
- 1052 Cast iron hinged stable passageway saddle/tack bracket
- 1053 Copper/brass folded coach horn by *Henry Keat, London*; for restoration
- 1054 Pair of decorative brass horses mounted on display boards
- 1055 Three zinc remedial collar liners
- 1056 Four pairs of nickel boot spurs
- 1057 Two pairs of burnished steel military stirrups
- 1058 Horn mane comb
- 1059 A collection of various hunt crops, riding whips, etc. to be sold as eight separate lots **(8 lots, 1059 - 1066)**
- 1067 An early mid-Victorian side saddle
- 1068 An unusual mahogany and brass boot jack with foot-operated boot clamp
- 1069 A fine quality hunting crop in Malacca cane with hallmarked silver ferrule, hallmarked 1920, fitted with 10' thong; all in good condition
- 1070 Two dark blue hard riding caps with various false hairpieces, nets, etc.
- 1071 A pair of black riding boots with original trees
- 1072 Four pairs of nickel box spurs
- 1073 Sundry heavy horse plumes and brass plume holders
- 1074 Assortment of sundry harness and driving accoutrements **(7 lots, 1074-1080)**
- 1081* Dealer's whip by *Crawleys of Peterborough*
- 1082* Pair of black leather boots with wooden trees
- 1083* Two pairs leather driving gloves, extra large
- 1084* Two pairs leather driving gloves, large
- 1085* Two pairs leather driving gloves, medium
- 1086* Collar
- 1087* Rear carriage lamp
- 1088* Pair of carriage lamps
- 1089* Driving whip
- 1090* Pair of stainless steel quick release snaps
- 1091* Pair of stainless steel quick release snaps
- 1092* Driving apron
- 1093* Pair of traces
- 1094* Collar
- 1095* Two breastcollars
- 1096* Pair of Liverpool bits
- 1097* Driving whip
- 1098* Set of pair horse driving reins
- 1099* Pair of carriage lamps
- 1100* Pair pole straps
- 1101* Stainless steel Liverpool bit, 4¹/₂"
- 1102* Stainless steel Liverpool bit, 5"
- 1103* Stainless steel Liverpool bit, 5¹/₂"
- 1104* Pair driving reins
- 1105* Driving pad
- 1106* Four brass harness bells
- 1107* Driving apron
- 1108* Rear carriage lamp
- 1109* Driving whip





Lot 19



Lot 22



Lot 22



Lot 25



Lot 26



Lot 27



Lot 28



Lot 31





Lot 40



Lot 41



Lot 42



Lot 43



Lot 44



Lot 45



Lot 46



Lot 47



Lot 48



Lot 49



Lot 516



Lot 574



Lot 590



Lot 1137




Lot 1431



Lot 1514



Lot 1515

- 1110* Rubber Liverpool bit
- 1111* Driving bridle
- 1112* Breaking roller
- 1113* Pair of carriage lamps
- 1114* Horse measuring stick
- 1115* Collar
- 1116* Bridle
- 1117* Pair carriage lamps
- 1118 Pair harness/pad bracket made by *Musgrave*; damaged
- 1119 Reins and crupper bracket
- 1120 Pelham bit with chain, 5"
- 1121 Scythe for long grass
- 1122 Black general purpose saddle, 15"
- 1123 Pair of brass hames
- 1124 Black leather collar, 22"
- 1125 Pair of whitemetal hames with traces
- 1126 Black/whitemetal breastcollar to fit 15 hh
- 1127 Black/whitemetal breeching and crupper to fit 15 hh
- 1128 Full size black/whitemetal driving bridle; as new
- 1129 Full size black/whitemetal bridle with Liverpool bit; as new
- 1130 Box of eleven assorted wooden moulding planes and an 'old woman's tooth' router
- 1131 Carriage lamp
- 1132 Picnic basket
- 1133 Willow coaching whip, approx 5/6' long
- 1134 Small brass horn, approx 12" long; no makers mark
- 1135 Pair of whitemetal carriage lamps
- 1136 Ladies hunting crop with silver butt cap
- 1137 Ladies hunting crop
- 
- 1138 Twisted willow dealer's whip by *Fleck of Germany*, 44"
- 1139 Twisted willow dealer's whip by *Fleck of Germany*, 44"
- 1140 Black dealer's whip by *Goddards*, 42"
- 1141 White dealer's whip by *Goddards*, 42"
- 1142 Brown dealer's whip by *Goddards*, 42"
- 1143 Black nylon Bow Top whip, 64"
- 1144 Black nylon Bow Top whip, 64"
- 1145 Black/brass driving bridle to fit a Cob; new
- 1146 Black/brass driving bridle to fit a Shetland; new
- 1147 Set of black/brass/webbing driving reins
- 1148 Pair of collar decorations of brass studs of hearts and squares; in good order
- 1149 Heavy horse bridle with brass studs on blinkers, initialled *JW/IW*; in good condition
- 1150 Heavy horse bridle; in good condition
- 1151 Heavy horse bridle with bearing rein; in good condition
- 1152 Three full size controlling halters and two white cotton 'Yorkshire' halters
- 1153 Heavy horse bridle, suitable to fit a Liverpool bit; in good order
- 1154 Heavy horse leather headcollar with brass detail; in good order
- 1155 Three driving whips; in good condition
- 1156 Heavy horse breastcollar; in good condition
- 1157 Three webbing headcollars plus one leather headcollar
- 1158 Stainless steel egg butt snaffle bit, 6", plus one extra full size riding bridle
- 1159 Two heavy horse martingales
- 1160 Two extra large sweat rugs, plus one check quarter rug
- 1161 Green driving apron, as new, plus brown leather gaiters
- 1162 Navy velvet *Champion* show ring riding hat
- 1163 Navy dressage/half top hat by *Christy's of London*; new, still in box
- 1164 Pair of brass swingers plus harness brass; in good condition
- 1165 Two pairs of brass bridle rosettes; in good condition
- 1166 Pair of solid brass double cased hames, *No.2 Patent*; in show condition
- 1167 Webbing roller, metal curry comb, hoof picks, mane and tail trimming tool and a modern nosebag; new

- 1168 Training aid – horse mane stand for practising, wool and flight, plaiting; for adult or child use
- 1169 Leather strengthening bindings, plus saddlery threads and needles and collar fabric
- 1170 Box of harness sundries
- 1171 Four harness hanging brackets
- 1172 Metal cabinet fitted with harness hanging brackets
- 1173 Metal cabinet fitted with harness hanging brackets
- 1174 Rug tidy for five rugs
- 1175 Nose bag
- 1176 Pair of round fronted lamps by *Holmes of Derby & London*
- 1177 Pair of brass oval lamps
- 1178 Rear carriage lamp
- 1179 Dashboard lamp
- 1180 Interior carriage lamp
- 1181 Black top hat, size 7 $\frac{7}{8}$
- 1182 Lady's parasol
- 1183 Whip socket
- 1184 Working collar
- 1185 Large hay rack, 6'
- 1186 Pair of black/brass carriage lamps
- 1187 Four bits
- 1188 Pair of fine carriage lamps with brass fittings and magnified front oval lenses by *Robinson of Cheshunt*
- 1189 Lady's holly silver mounted Gig whip
- 1190 Holly driving whip; repaired
- 1191 Assortment of WWI vintage driving bits and spurs and other accoutrements
- 1192 Assortment of WWI vintage driving bits and spurs and other accoutrements
- 1193 Driving whip
- 1194 Antique holly whip with makers name just above the handle, possible *Swaine*
- 1195 Leather cob/full size lead horse driving bridle
- 1196 Leather tugs and belly band
- 1197 Navy and white driving apron with waterproof underside
- 1198 Holly whip for a junior driver by *Edward Goddard Ltd.*; as new
- 1199 Pair of junior drivers coach lamps; as new
- 1200 Full size saddle, complete
- 1201 Rein handling machine
- 1202 Two whips mounted on a board
- 1203 Pony team whip
- 1204 Pair of small quality oil-filled brass lamps with bevelled glass, approx. 7 $\frac{1}{2}$ " high x 3"; used on small pony turnout, also suitable for a horseless carriage
- 1205 Coaching table with fold-down legs
- 1206 Coaching table with fold-down legs
- 1207 Hunting boots **(6 lots, 1207-1212)**
- 1213 Ladies whip **(5 lots, 1213- 1217)**
- 1218 Vintage driving bit
- 1219 Vintage driving bit
- 1220 Six hunting whips
- 1221 Set of boot trees for hunting boots
- 1222 A rare late 18thc pillion saddle

PURCHASERS ARE REMINDED OF THE 7.5% PLUS VAT BUYERS PREMIUM ADDED TO ALL LOTS IN THE SALE

THE ALTHORP HARNESS & SADDLERY COLLECTION

Commencing at 2.00 p.m. approx.

The following items are to be sold on behalf of the Trustees of the Spencer Family Collection

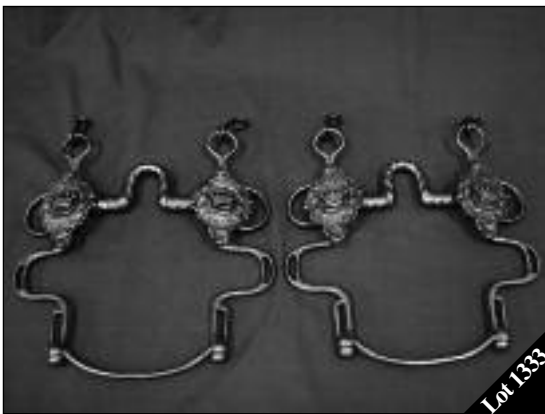
- 1261 Set of black/patent harness with peaked top collar, with *Spencer* armorials, silver plated chain linked hames, original traces
- 1262 Set of black/patent harness with 21" collar and silver plated hames with strap fitting
- 1263 Set of black/patent harness with 20" collar and silver plated hames with strap fitting
- 1264 Set of black/patent 22" peaked collar, bearing *Spencer* armorials, fitted with a pair of silver plated wheeler hames, together with original pair traces
- 1265 A black/patent leather bridle to fit 15 to 16 hh with silver plated fittings, steel Liverpool bit, bearing *Spencer* armorials
- 1266 A black/patent leather bridle to fit 15 to 16 hh with silver plated fittings, carriage bit, bearing *Spencer* armorials
- 1267 A black/patent leather bridle to fit 15 to 16 hh with silver plated fittings, carriage bit and larger *Spencer* armorials
- 1268 A black/patent leather single harness pad with silver plated fittings to suit approx 16 hh, complete with Tilbury tugs, crupper, loin straps, together with matching bridle with steel Liverpool bit, all bearing *Spencer* armorials
- 1269 A black/patent leather single harness pad with silver plated fittings to suit 15 to 16 hh, together with tugs, crupper and breeching complete with *Spencer* armorials
- 1270 A black/patent leather single harness pad, with silver plated fittings to suit approx 16 hh, complete with Tilbury tugs, crupper, loin straps, together with matching bridle with steel Liverpool bit, all bearing *Spencer* armorials – similar to Lot 1268
- 1271 A matching pair of swell pattern wheeler and leaders with black/patent/ silver plated pads, complete with cruppers and traces bearers, all with *Spencer* armorial
- 1272 A superb pair of silver plated State harness hames, together with a matching pair of pole straps
- 1273 Part set of black/patent semi-State PAIR harness, bearing the *Spencer* armorial, with silver plated fittings, comprising of 23" collars and hames, one swell pattern pad with breeching and loin straps, together with a set of four traces
- 1274 Part set of black/patent semi-State PAIR harness with silver plated fittings comprising one 23" collar, complete with hames and traces, one swell pad complete with crupper, breeching and loin straps and two bridles with armorial mounted bits, all bearing the *Spencer* armorial
- 1275 A good set of black/patent PAIR harness with silver plated fittings, 22" collars with leather covered hames, traces fitted with cockeye, pole straps, bridles, bits complete with armorials, pads complete with cruppers, breeching and loin straps, all bearing the *Spencer* armorial; no reins
- 1276 A good set of black/patent/silver plated TANDEM harness, consisting of a pair of 20" collars and hames, leader pads, wheeler pad, sprung cockeyes, bridles, etc; lacks reins
- 1277 A set of brown/brass breastcollar harness to suit a 12 hh pony, approx.
- 1278 A rare set of Sicilian single breastcollar harness with ornate decoration with silver plated hearts and chevrons
- 1279 Set of four black leather carriage traces with spring cockeyes
- 1280 Set of four black leather carriage traces; no springs
- 1281 Set of four black leather carriage traces; no springs
- 1282 Set of four black leather carriage traces; no springs
- 1283 Set of four black leather carriage traces; no springs

- 1284 Rare and highly decorative carriage apron in navy blue Melton cloth, with 4" border, finely hand-stitched with leaf type decoration, with a hand and foot pockets similarly decorated. The white silk interior embroidered with the *Spencer* family armorial complete with embossed oak leaf pattern buckles and original leather straps. Approx. 70" x 49" approx; silk lining stained, some moth damage
- 1285 Complete set of harness ribbons, sweat pads, rosettes and bridle fronts to suit a set of State harness in the *Spencer* colours of maroon and gold.
- 1286 Quantity of assorted bridle fronts, silk rosettes and silk brow bands, etc
- 1287 Three Union flags
- 1288 Pair of black silk breeches
- 1289 Set of four metal harness brackets consisting of four collar, four bridle and four pad brackets
- 1290 Set of four combination collar and bridle brackets
- 1291 Set of six collar brackets
- 1292 Set of six collar brackets
- 1293 Set of ten metal riding bridle brackets
- 1294 Set of ten metal riding bridle brackets
- 1295 Set of ten metal riding bridle brackets
- 1296 Set of seven metal riding bridle brackets
- 1297 Set of ten riding rein brackets
- 1298 Set of seven riding rein brackets
- 1299 Sundry harness and tack brackets
- 1300 Sundry tack room brackets
- 1301 Ten cast metal bit hooks
- 1302 Fourteen cast brass bit hooks
- 1303 Black silk Livery top hat by *Robert Heath & Co.*, complete with original cockade, size 7 $\frac{1}{8}$ approx., in cardboard box
- 1304 Black glazed hunting topper by *Lock & Co.*, size 7 $\frac{3}{4}$ approx., in a cardboard box
- 1305 Black silk top hat by *Lock & Co.*, size 7 $\frac{3}{8}$ approx., in a cardboard box
- 1306 Black silk top hat by *Lock & Co.*, size 7 $\frac{1}{4}$ approx., in a cardboard box
- 1307 Hard black bowler riding hat by *Lock & Co.*, size 7 $\frac{1}{4}$ approx., in a cardboard box
- 1308 Dark blue velvet Postillion type cap, very small
- 1309 A quantity of horse name boards and carriage information boards
- 1310 Large quantity of various riding stirrups
- 1311 Two pairs of open sided safety stirrups
- 1312 A *Latchford* patent side saddle safety stirrup
- 1313 Three pairs of military stirrups by *Wilkinson & Kidd*
- 1314 Pair of sprung sided safety stirrups, together with a pair of stirrups with leather padded treads
- 1315 A decorative brass Arab type stirrup, together with an iron Arab type stirrup, and a pair of leather clog stirrups, a/f
- 1316 Two burnished steel carriage bits by *Merry & Co.*, with high gate port
- 1317 Two burnished steel carriage bits with kidney port; one by *Sowter* and one by *Oldaker*
- 1318 A fine unusual carriage bit by *Wilkinson & Kidd* with cherry rollers and player ring
- 1319 Two carriage bits, one stamped *Wells & Son* with high ports
- 1320 A burnished steel carriage bit by *Merry & Co.*, with high port and cherry rollers
- 1321 A burnished steel carriage bit by *Oldaker* with port and player ring with Chifney bit
- 1322 A burnished steel carriage bit by *Merry & Co.*, with twisted mouth bar
- 1323 Two burnished steel carriage bits by *Wilkinson* with medium port
- 1324 Four burnished steel swivel bar carriage bits
- 1325 Two burnished steel carriage bits; one by *Oldaker* with medium port, the other with double twisted bars
- 1326 Two burnished steel carriage bits, medium kidney port; one by *Merry & Co.*, the other by *Latchford*
- 1327 Three burnished steel carriage bits with medium ports; one by *Wilkinson*, one by *Oldaker*
- 1328 Three burnished steel Liverpool bits, plus one burnished steel military elbow bit by *Craddock 1902*
- 1329 Burnished steel crested carriage bit, the crest with coronet and oak leaf surround by *Wilkinson*

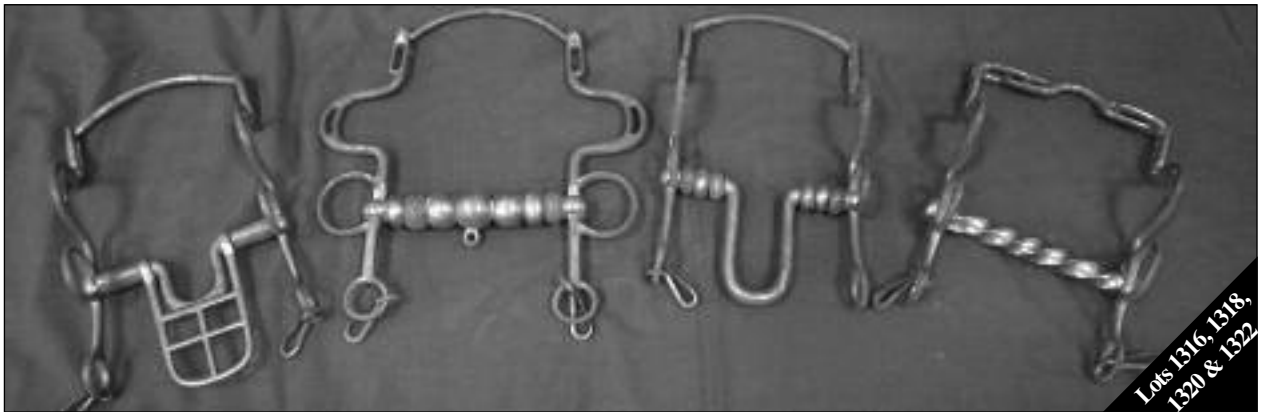
- 1330 Burnished steel crested carriage bit by *Oldaker* with a medium port
- 1331 Burnished steel crested carriage bit by *Wilkinson* with a medium port
- 1332 Burnished steel crested carriage bit by *Oldaker* with a medium port
- 1333 A fine pair of burnished steel crested carriage bits by *Oldaker* with medium port
- 1334 Burnished steel carriage bit by *Latchford*
- 1335 Four various iron riding bits
- 1336 Seven various steel riding bits
- 1337 Ten various steel riding bits
- 1338 Quantity of sundry steel riding snaffles
- 1339 Three mouthing bits
- 1340 An unusual leather axe holster with saddle fittings; no axe
- 1341 A leather spare horseshoe case with saddle fittings (military)
- 1342 A pair of leather 'leg of mutton' type pistol holsters
- 1343 Mahogany and cast iron bridle bracket by *Musgrave of Belfast*
- 1344 A torch in leather case with belt fittings with plate *The Orilux, J.H. Steward Ltd, 406 Strand, London* stamped *First Lifeguards*
- 1345 An interesting leather handled hay tester stamped *Earl Spencer, Althorp Park*; hook a/f
- 1346 Pair of military leather saddle wallets
- 1347 A military leather bullet pouch by *Harvey & Co., Saddlers Walsall*
- 1348 A leather military sword frog with saddle attachments, with a pair of associated items
- 1349 A very unusual false horse hair tail crupper, black patent leather with silver plated oval harness buckles
- 1350 Box of sundry leather belts etc, mainly military
- 1351 Two leather horse muzzles
- 1352 Pair of brass tandem ring rosettes
- 1353 Pair of brass tandem eye rosettes
- 1354 Pair of silver plated tandem eye rosettes
- 1355 Box of sundry harness buckles, fittings and leather straps, some with Althorp armorial crests
- 1356 Four various double bridles; complete and in good condition
- 1357 Four various double bridles; complete and in good condition
- 1358 Five various double bridles; complete and in good condition
- 1359 Sundry martingales, etc
- 1360 Quantity of girths; in good condition
- 1361 Four double bridles with interesting various bits; complete
- 1362 Four various leather girths
- 1363 Sundry rugs, blankets and rollers,
- 1364 Sundry leather items of tack and harness
- 1365 Side saddle by *Clark of London*, circa 1900, with quilted seat and fore edge, with Champion & Wilton style safety stirrup fitting; complete with leather and iron; in very good condition
- 1366 A child's 14" side saddle, leather seat, quilted fore edge, roller bar stirrup leather fitting with *Latchford* safety stirrup; in very good condition
- 1367 Boy/girl pilch with reversible pommels and flap, quilted all over
- 1368 A brown leather groom's pad, for use with a side saddle
- 1369 A superb military saddle, circa 1900, by *Sowter & Co.*, complete with original stirrups, saddle wallets, spare horseshoe case with sword frog, all brass fittings and saddle edging; in very fine condition
- 1370 Brown/brass leather double military bridle with crested bit stamped, *Northamptonshire Imperial Yeomanry*, bridle rosettes depicting a silver galloping horse, complete with throat plume and martingale bearing Northamptonshire crest, 1902 pattern; all in excellent condition
- 1371 A general purpose military saddle, brass edging cantle by *Whippy Steggall*, complete with sword frog; in excellent condition
- 1372 Brass mounted military headcollar with burnished steel elbow bit by *Smith & Co.*, together with martingale with crest, stamped *Infantry Volunteers, V.R.*
- 1373 Black/brass military double bridle, headpiece with ornate star decoration, V.R. bit with brass royal insignia and crossed chain, together with similar crested martingale; complete and in good condition

- 1374 Black/brass military double bridle, headpiece with ornate star decoration, V.R. bit with brass royal insignia and crossed chain, together with similar crested martingale; complete in good condition
- 1375 A very fine brown leather double military bridle with ornate nickel plated buckles, bit with nickel plated crest stamped 'V.R.' and cross chain with matching martingale and crest; complete and in good condition
- 1376 Two single military bridles, together with sundry military items
- 1377 Brown leather spring-tree saddle, 17½"
- 1378 Brown leather general purpose saddle by *Whippy Steggall*, 18"
- 1379 Three general purpose saddles
- 1380 Three general purpose saddles
- 1381 Brown leather general purpose saddle, 17" with doe skin seat, a/f, together with a general purpose saddle, 19"
- 1382 Quantity of canvas and leather saddle covers
- 1383 Pair of modern stirrups and leathers
- 1384 Assorted cloth, one red velvet with gold border, red velvet square and green crushed velvet

PURCHASERS ARE REMINDED OF THE 7.5% PLUS VAT BUYERS PREMIUM ADDED TO ALL LOTS IN THE SALE







PAINTINGS & PRINTS

Commencing at 12.00 p.m.

- 1401 Photograph of James Selby dressed in coaching attire, 8" x 6"
- 1402 Print showing a pair of ploughing Shire horses
- 1403 Limited edition print: *Patience is Trust* showing a man shoeing, signed by the artist Petter Goidhall
- 1404 Four prints showing scenes of London
- 1405 Three coaching prints
- 1406 Four coaching prints
- 1407 Pair of prints depicting gypsy horses
- 1408 A framed illustration from a graphic of 17th March 1877 of *The Stallion Show at the Glasgow Agricultural Society Hall*
- 1409 Framed print after Cecil Aldin of a bay and a grey in tandem
- 1410 Framed print after Cecil Aldin of a bay and a skewbald in tandem
- 1411 Colour print of a coaching scene after George Wright: *Meeting the Hunt*
- 1412 Two framed prints by Cecil Aldin and George Wright
- 1413 Mounted print of a huntsman and hounds
- 1414 Mounted print of two gypsy caravans and tent in woodland
- 1415 Mounted print of Bungay Horse Fair, 1904
- 1416 Unmounted print depicting three caravans
- 1417 Mounted print of a pony tandem by Achenbach
- 1418 Mounted print by G Goodwin of a donkey tandem
- 1419 Print by Cecil Aldin: *Brighton*, of a lady driving tandem
- 1420 Signed by the artist Mike Burr, a mounted print of a farrier shoeing a Whitbread horse
- 1421 Mounted print by Jaquie Jones of a gypsy camp fire
- 1422 Print: *Mr Fox's Hunt Breakfast*
- 1423 Print by L Wood: *Lurchers*
- 1424 Print of the Prince of Wales on Forest Witch
- 1425 Picture depicting partridge shooting
- 1426 A print of the three Kings - Arkle, Red Rum and Dessert Orchid
- 1427 A piece of tapestry depicting a huntsman and hounds in an oak frame
- 1428 A large colour print of a team of plough horses being startled by a hunt in the next field, horses being restrained by a plough boy
- 1429 A colour print after H. Alken entitled, *Going in First Rate Style*, depicting a four-in-hand and Barouche racing downhill, 1872
- 1430 A colour print of Paris Diligence and Cabriolet, 1825
- 1431 Framed sepia photograph entitled *The 'Old Times' - London & Brighton 1888*, showing the 'Old Times' outside the Old Ship Hotel in Brighton, 18½" x 14½" (*illustrated*)



- 1445 Large print of four in hand
- 1446 Print depicting pair horses pulling Short Stage Coach
- 1447 Two prints of caravans
- 1448 Coaching print: *A Visit from her Majesty*
- 1449 Pair of small coaching prints
- 1450 Painting by Bruce Thomson: *Going Home*, 16" x 20"
- 1451 Print after Ludovici: *Coach at Inn Yard*
- 1452 Print by Rosa Bona of wagon and horses
- 1453 Print by Hugh Thompson: *La Belle Savage*
- 1454 Print by Hayward Harvey: *Forward Away*
- 1455 Picture by Sanderson Wells: *A Friendly Greeting*
- 1456 Pair of coaching scenes by Gilbert Write
- 1457 Pair of modern prints of a coach crossing a bridge and a coach with a hunt
- 1458 Print by Harry Miller: *Morning Drive*
- 1459 Print by Crawford MacFall: *Our Embodiment 1900*
- 1460 Unframed print by Nicholas Winfield: *St Julien*
- 1461 Unframed print by Herring: *Steeple Chase*
- 1462 Five framed farming photos
- 1463 Four Shire horse prints and painting
- 1464 Three framed illustrations of Shire horses
- 1465 Enamel advertising sign: *Kiwi Black Boot Polish*, showing a guardsman on horseback
- 1466 Original oak frame picture: *Rotten Row*, of a park scene with carriage and ladies riding side saddle
- 1467 Framed photos by A. Whittaker Reville: *Changing Horses & The Rocket Coach*
- 1468 Set of four coaching scenes in wooden frame
- 1469 Collection of six small coaching scene prints drawn by T.H. Shepherd
- 1470 Collection of seven medium sized prints/drawings of coaching scenes
- 1471 Two prints: *Coaches of the Day – Cross the Splash and Out of Collar*
- 1472 Two prints: *Coach and Four* by W.J Shayer, and *Crossing the Bridge* by George D. Rowlandson
- 1473 Four black and white pictures: *Reigate Suspension Bridge, 1908; Lord Leconfields Coach at Pycombe; Vanderbilt's Coach 'The Venture' at Dale Hill and The Vanderbilt Greys*
- 1474 Framed picture of a coach and hunting scene
- 1475 Framed coaching picture: *Changing Horses* by GM Bennett, 1929
- 1476 Framed picture by John Charles Maggs: *The Stage Coach*
- 1477 Hand coloured picture: *Ackermann's Coaching Scrapes*
- 1478 Framed oil painting of a coaching scene
- 1479 Black and white drawing/print: *Thorncroft Manor, Leatherhead*
- 1480 Print by Alwyn Crawshaw: *Sweet & Dry*, of two Shires at Triggs Lock, on the river Wey in Surrey
- 1481 Two photographic prints: *Frosty Moon*, a flat racehorse who had two wins as a three year old in 1944 and three wins as a five year old in 1946
- 1482 Painting by N. McDonnell of a gypsy encampment

THE NEXT
READING CARRIAGE SALE

Wednesday 3rd November

Deadline for entries: 1st October

**PLEASE CONTACT THE OFFICE FOR AN ENTRY
FORM OR DOWNLOAD ONE FROM OUR
WEB SITE – www.tsauction.co.uk**

**PURCHASERS ARE REMINDED OF THE 7.5%
PLUS VAT BUYERS PREMIUM ADDED TO
ALL LOTS IN THE SALE**

MODELS

To follow the Pictures

- 1511 Oak clock and barometer with three brass team bars suspended above
- 1512 Model of a horse and jockey
- 1513 A rare children's four-wheel bicycle being pulled by a pair of MOBO horses. Originally displayed in Harrods, London, circa 1930's

The next nine lots (1514 to 1522) are all hand-made to the scale of 1:12

- 1514 Model of a Road Coach painted red and black with a pair of removable lamps, also with working steering and breaking mechanism



- 1515 Model of a horse-drawn Omnibus painted yellow and green with advertising boards of 'Oxo', 'Pearce Duff's' and 'Bisto'. Working steering and breaking mechanism, and removable seats



- 1516 Model of a Bow Top Gypsy Caravan painted yellow and red with decorated interior fitted with a Queenie stove, bed and cupboards, working steering and breaking mechanism
- 1517 Model of a London Hansom Cab painted black and green, fitted with a pair of lamps
- 1518 Model of a four-wheeled Dog Cart painted black and green with a pair of lamps, and a working breaking and steering mechanism

- 1519 Model of a Reading style Gypsy Caravan painted maroon and yellow, with a removable roof to reveal decorated interior including a Queenie stove and traditional furniture, with a boat lock and working breaking and steering mechanism
- 1520 Model of a farm Dray in natural wood
- 1521 Model of a two-wheel Market Cart in natural varnished wood and red painted wheels
- 1522 Model of a two-wheel Brewers Cart with three wooden kegs all in natural wood
- 1523 Pair of designer cufflinks by Kenneth Cole
- 1524 Bust ornament of two horses on an onyx base
- 1525 *Matchbox* models of Yesteryear, Coach and Four Horses, special edition
- 1526 Small pub mirror of coach and horses
- 1527 Pewter pin of box seat
- 1528 Pewter pin of a side saddle
- 1529 Pewter pin of a carriage lamp
- 1530 Pewter pin of a single turnout cross country
- 1531 Pewter pin of a pairs turnout cross country
- 1532 Pewter pin of a girl on a *Thelwell* pony
- 1533 Coloured enamel pin of a lady riding side saddle
- 1534 Coloured enamel pin of a black Welsh Cob
- 1535 Brass letter rack of a Shire horse
- 1536 Clock set within a stirrup advertising *Vanner & Prest Stable Requisites*
- 1537 Clock set within a horseshoe with bit and hunt horn surround
- 1538 Round lacquered box with a hand painted scene of a stag hunt, approx. 8cm across
- 1539 Model of limited edition gold State Coach commemorating the *40th Anniversary of Her Majesty's Accession to the Throne*
- 1540 Dashboard carriage clock
- 1541 Copper mirror with moulded carriage picture
- 1542 Brass inkwell in the form of a jockey's hat with horseshoe and whips pen stand
- 1543 Small glass perfume bottle engraved with horses head
- 1544 Wooden model of Hermaphrodite Farm Wagon
- 1545 Model of a two wheel American Mail Cart painted green and yellow

- 1546 Model of a Royal Mail Coach painted red and black with leather covered livery. A 1/8th scale construction with full provenance and painting schedule, from the John Thompson plans. Fully furnished interior and complete with a pole and swingletrees, wheel jack and blunderbuss, all presented in a glass case of 1830's style construction, 22" x 15" x 12"
- 1547 Model of a Dog Cart painted green and yellow
- 1548 Model of a Wagonette Brake painted green and yellow
- 1549 Model of a Governess Cart
- 1550 Model of a harnessed Shire horse
- 1551 Hand-carved wooden Shire horse, *Prince*
- 1552 Model of a four-wheeled Sussex Wagon
- 1553 Model of a two-wheel Hay Cart
- 1554 Model of a Shire horse and Cart
- 1555 Boxed model of a Gypsy Caravan by *Matchbox*; in great condition
- 1556 Mantle clock with brass fittings in the shape of a horseshoe
- 1557 Eight day carriage clock in a leather holder with clips to attach to a carriage; in excellent condition
- 1558 Set of three china tankards depicting scenes from Coaching Days and Coaching Ways
- 1559 Three coaching jugs by *Falcon Ware*
- 1560 Assortment of china plates, bowls, mugs, cups and saucers all depicting coaching scenes
- 1561 Model of a US Mail Coach
- 1562 Model of a Royal Mail Coach
- 1563 Model of the London-Oxford Coach
- 1564 *Burleighware* plant pot with a coaching scene
- 1565 A rare model of rearing bay/brown Welsh cob by *Beswick*, model no. 1014; in perfect condition
- 1566 A rare model of a pinto pony by *Beswick*, model no. 1373; in perfect condition
- 1567 Bronze model of a prancing horse
- 1568 *Beswick* model of a Palomino, *Sun Burst*, model no. 2671
- 1569 *Beswick* model of a mare and foal, model no. 953
- 1570 *Beswick* model, *Black Spirit of Wind*, model no. 2688

- 1571 *Beswick* model of a brown Shire, model no. 818
- 1572 Model of a yellow Labrador by *Border Fine Arts*

PURCHASERS ARE REMINDED OF THE 7.5% PLUS VAT BUYERS PREMIUM ADDED TO ALL LOTS IN THE SALE

For a more personal approach to insurance

Ewan MacInnes
on 01467 625424
email: inverurie@nfumutual.co.uk



Approved by the Financial Conduct Authority and the Prudential Regulation Authority. Member of the Financial Conduct Authority.

NFU Mutual is a member of the NFU Mutual Group.

EQUESTRIAN BOOKS

To follow the Pictures & Models

- 1591 Ward-Jackson, C & Harvey, D: **English Gypsy Caravan**
- 1592 Magazines: **Carriage Journal**, Vols 1 to 8, from 1963 to 1971
- 1593 Magazines: **Carriage Journal**, Vols 9 to 14 from 1971 to 1977
- 1594 Magazines: **Horse & Driving**, Aug 1978, Vols. 1979 to 1984, Jan to Aug 1985 and **Horse & Driving International**, Feb & March 1986
- 1595 Rogers, Fairman: **Manual of Coaching**
- 1596 A booklet illustrating items made by Maxwell & Co., London, depicting boots, spurs, whips, hunting and riding accessories, etc.
- 1597 Smith, DJ: **Discovering Horse-Drawn Caravans**
- 1598 Oaksey, John: **Sefton**
- 1599 Ingram, Arthur: **Horse-Drawn Vehicles Since 1760**
- 1600 Six gypsy postcards mounted on card
- 1601 Richardson, MT: **Practical Carriage Building**
- 1602 Ogilvie, Will H.: **Galloping Shoes**, illustrated by Lionel Edwards, 1924
- 1603 Denis, Harvey & Jackson, Ward: **The English Gypsy Caravan**, 1973
- 1604 Jones, Alan E: **Yorkshire Gypsy Fairs, Customs and Caravans**
- 1605 Smith, DJ: **A Dictionary of Horse-Drawn Vehicles**
- 1606 Vince, John: **Discovering Carts and Wagons**
- 1607 Smith, DJ: **Discovering Horse-Drawn Commercial Vehicles**
- 1608 Ryder, Tom: **Carriage Turnout and Appointments**
- 1609 Bowker, Nancy: **John Rarey, Horse Tamer**
- 1610 Catalogue: **Brown & Sons, Carriage Builders, Windsor & Slough**
- 1611 **Harnessing Up** and **Royal Cavalcade**, (2 books)
- 1612 **Arab Horse Champions** and **A-Z Horse Behaviour & Training** (2 books)
- 1613 Thompson, J: **Horse-Drawn Carriage Construction**
- 1614 **Horse & Horseman**, edited by Peter Vischer, J.A. Allen & Co., 1967
- 1615 Summerhays, R.S. : **Observer's Book of Horses & Ponies**, Frederick Warne & Co., 1973
- 1616 Guttery, Wing Com. T.E.: **Horse-Drawn Carriages of the Shuttleworth Collection**
- 1617 Hart, E.: **The Harness Horse**, Shire Publications Ltd., 1981
- 1618 **BDS Journal**, 1991
- 1619 MacLeod, G.: **The Treatment of Horses by Homeopathy**, C.W. Daniel & Co., Ltd., 1988
- 1620 Holmes, C.M.: **The Principles and Practice of Horse Shoeing**, The Farrier's Journal Publication Co., 1928
- 1621 Fawsett, W.: **The Young Horseman**, Adam & Chas. Black & Co., 1960
- 1622 **Training the Young Horse and Pony**, pony club publication Barrons, 1977
- 1623 De Bairacli Levy, J.: **Herbal Handbook for Farm & Stable**, Faber & Faber, 1973
- 1624 Bird, A.: **Roads & Vehicles**, Arrow Books Ltd., 1973
- 1625 Smith, D.J.: **Discovering Horse-Drawn Commercial Vehicles**, Shire Publications Ltd., 1985
- 1626 Henry, M.: **All About Horses**, W.H. Allen, 1963
- 1627 Burgess, J.W.: **A Practical Treatise on Coach Building**, sixth impression, Crosby Lockwood & Son. Complete but not in very good condition, needs rebinding but spine in tact
- 1628 **Moseman's Illustrated Guide for Purchases of Horse Furnishing Goods**, 1990 reprint edition of original 1889 and 1892 publications, Bracken Books, London
- 1629 Large box of old and new **Carriage Driving** magazines, some in binders
- 1630 Large box of **Hounds** magazines, some in binders
- 1631 Allen, J.A.: **Horse Breeding & Stable Management**, **BHS Equitation – Training of Rider & Horse**, **Advance Levels** and Williams, Dorian: **The Classical Riding Master** (3 books)
- 1632 Telleen, M: **The Draft Horse Primer**

- 1633 Coombs, T: **Horse Driving Trials and Royal Cavalcade – A History of the Carriages and Transport of English Kings and Queens from Elizabeth I Onwards** (2 books)
- 1634 Nimitz, Andreas: **The Lindau Messenger**, Kidd, Jane: **Gilbeys, Wine & Horses** and Reese, M.M: **The Royal Office of Master of the Horse** (3 books)
- 1635 HRH Duke of Edinburgh: **Competition Carriage Driving**, Lorch, Walter: **Competition Vehicles** and The Duke of Beaufort: **The Badminton Library – Driving**, 1986 edition (3 books)
- 1636 Jepsen, SM: **The Coach Horse Servant**, Richards, John: **Stagecoach** and Stuart-Wilson, Mary: **The Royal Mews** (3 books)
- 1637 Holden, Bryan: **The Long Haul – The Life and Times of the Railway Horse** and Lorch, Walter: **Snow Travel and Transport** (2 books)
- 1638 Quantity of assorted programmes
- 1639 Spring, Howard: **Darkie & Co.**, 1st ed.
- 1640 **Travellers Ways & Words**
- 1641 Cowles, F: **Gypsy Caravan**, rare 1st ed.
- 1642 Tanye, D: **A Donkey in the Meadow**, 1st ed.
- 1643 Wesselow, M: **Donkeys**
- 1644 Levy, J: **As Gypsy Wander**, 1st ed.
- 1645 Derwent, L: **MacPherson’s Caravan**
- 1646 Paxton, M: **Mirren (The Gypsy Girl)**
- 1647 Blyton, E: **Puzzle for Secret Seven**
- 1648 Blyton, E: **5 Go to Mystery Moor**
- 1649 Martin, B: **Caravan Days**, 1st ed.
- 1650 British Driving Society syllabus for driving competence consisting of, **Road Driving, Preliminary, Intermediate and Advance** (4 books)
- 1651 Assortment of driving books and videos
- 1652 **Hunters Stud Book**, five volumes
- 1653 **The Horses Year Book**, seven volumes
- 1654 Fitzgerald, Brian Vesey: **The Book of the Horse**
- 1655 Four various books
- 1656 **Saddlery & Harness** and a catalogue (2 books)
- 1657 **The Coachbuilders’ Book of Designs**, publishers J.E. Noble & Co., 1909, 24 Bond Street, Sydney Australia, 2nd ed.
- 1658 **Coaching Days of England**, publishers by Paul Elek Productions Ltd., measuring 15” x 20”; dust cover slightly torn (MCMLXVI)
- 1659 Box of assorted heavy horse books
- 1660 Assorted horse books
- 1661 Bennett, G: **Famous Harness Horses**, Vols.1 & 2
- 1662 Ryder, Tom: **The High Stepper**
- 1663 Sturt, George: **The Wheelwright’s Shop**
- 1664 Burdett-Coutts: **The Brookfield Stud of Old English Breeds of Horses**
- 1665 Machin Goodall, Daphne: **Horses of the World**, 1965
- 1666 Ryder, Tom: **High Stepper**
- 1667 Ganton, Doris L: **Drive On**
- 1668 Axe, Prof. J Wortley: **The Horse – It’s Treatment i8n Health & Disease**, 9 volumes of 1st editions
- 1669 Pape, Max: **The Art of Driving**
- 1670 H.R.H. The Duke of Edinburgh: **Competition Carriage Driving**
- 1671 Huggett, Frank: **Carriages at Eight**
- 1672 **Country Life Book of the Horse**
- 1673 **Coaching Days of England**

PURCHASERS ARE REMINDED OF THE 7.5% PLUS VAT BUYERS PREMIUM ADDED TO ALL LOTS IN THE SALE

IMPORTANT NOTICE – MARKET OFFICE

In order to assist with the efficient running of the market office on busy sale days and to reduce the queuing time, please note the following system.

Purchasers will queue as before to request and settle invoices with the main cashier.

Vendors requiring advice notes or clients with any queries which DO NOT involve payment will enter from the 'Exit' door and talk to the member of staff on the end computer.

Your co-operation in this matter would be much appreciated.

LISTS OF AUCTION PRICES

These are available after the auction and are intended for clients who attended the sale who will be aware of any substituted lots that may have been forward.

The price is £4.00 per sale or £16.00 for an annual subscription.

ACCOMMODATION IN READING

It is imperative that if you intend to spend the night in Reading you book well in advance.

Reading is an extremely busy commercial centre and as a result, most hotels and Travel Lodges do not have rooms available at the last minute. Please refer to the list at the front of the catalogue, under sale notes or telephone our office for a more extensive list of accommodation, covering a wide range of prices.

A Travel Lodge is located near to the Market in central Reading - 08700 850950

****THREE NEW HOTELS HAVE OPENED IN CENTRAL READING****

(On Friar Street, 10 minutes walk from the Market)

IBIS HOTEL – 0118 953 3500

NOVOTEL – 0118 952 2600

www.ibishotel.com

PREMIER INN – 0870 850 6318 (Letcombe Street)

FORTHCOMING EQUESTRIAN AUCTIONS 2010

- Wednesday 22nd September** **The Norman Brown Carriage Collection**
including 40 Coloured Driving Horses & Youngstock,
together with a superb collection of 20 Horse-Drawn
Carriages including The Vigilant Road Coach
at Boardmills, Lisburn, Northern Ireland BT27 6TT
- Friday 1st October** **Reading Autumn Sale of Horses & Saddlery**
at Reading Auction Market
- Saturday 9th October** **Corby Castle Stock Reduction Horse Sale**
of registered Lippizaners and Shire Horses, some broken to
drive, mares, foals and youngstock
at Carlisle, Cumbria
- Saturday 16th October** **The Suffolk Horse Sale**
including Heavy Horse Harness, Wagons & Implements
at Trinity Park, Ipswich (formerly known as the Suffolk
Showground)
- Wednesday 20th October** **42nd Annual Show & Sale of Registered Shetland**
Ponies
at The Reading Auction Market
- Saturday 30th October** **The Autumn Reading Sale of Horse Brasses**
at The Reading Auction Market
- Wednesday 3rd November** **Reading Carriage Sale**
at The Reading Auction Market

FOR INFORMATION, CATALOGUES & ENTRY FORMS, PLEASE CONSULT OUR WEB SITE – www.tsauction.co.uk

Entries for all the above sales in Reading are now being accepted. Forms are available from the office or online. Please ensure we have your entries six weeks prior to the sale to ensure inclusion in the catalogues. All catalogues will be online prior to the sale. If you would like to receive notification of all our sales via email (e-shot) please register on our website:

www.tsauction.co.uk

For further information about our world famous carriage sales or any other auctions or services we provide, please do contact us

Thimbleby & Shorland

Thimbleby & Shorland

Chartered Surveyors, Auctioneers, Valuers, Land & Estate Agents since 1901

The Corby Castle Stock Reduction Horse Sale

For sale by Public Auction

30 Registered Lipizzaner and Shire Horses



Comprising

**Driving horses,
Mares & Foals and other youngstock**

To be sold on site at

**The Stables, Corby Castle, Great Corby,
Carlisle CA4 8LR**

on Saturday 9th October 2010

Commencing at 11.00am

Catalogues in due course from the auctioneers or on line at

www.tsauktion.co.uk

31 Great Knollys Street

Reading, Berkshire RG1 7HU

Website: www.tsauktion.co.uk

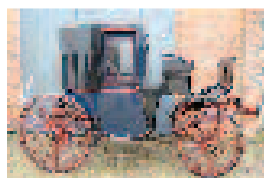
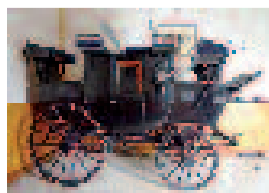
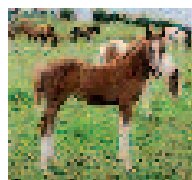
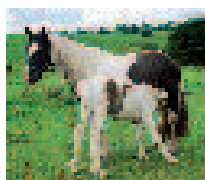
+44 (0)118 950 8611

Fax: +44 (0)118 950 5896

Email: info@thimbleby-shorland.co.uk

THE NORMAN BROWN CARRIAGE COLLECTION

**20 Superb Original Vehicles, including 2 ex Royal Mews,
The Vigilant Road Coach, Drag by Holland & Holland,
Rare Hansom Cab, Brewster Brake,
Gigs by Lawton & Peters, Marston Landau &
Thrupp & Maberly Brougham,
plus Sets of Harness etc. and 40 driving horses and youngstock,
similar breeding to Mr President & Rosehall Tara Maiden**



To be held on site at

Boardmills, Lisburn, Northern Ireland BT27 6TT

Wednesday 22nd September 2010

Catalogues £10

Live internet bidding through i-bidder.com will be available at this auction

Further information and catalogues will be available on the web

Thimbleby & Shorland

Tel: 0118 9508 611

www.tsauction.co.uk

Thimbleby & Shorland

Subscribe!

www.tsauktion.co.uk

The screenshot shows the Thimbleby & Shorland website interface. At the top, the logo and navigation menu are visible. A large grey oval overlay contains the text: "Keep up to date with ALL T&S Auction Sales subscribe on-line you can unsubscribe anytime". Below the overlay, the website content includes a "CATEGORIES" section with icons for various auction types, a "KEEP YOURSELF UPDATED" section with a subscription form, and an "UPCOMING AUCTIONS" section listing various sales events.



31 Great Knollys Street,
Reading, Berkshire RG1 7HU

+44 (0)118 950 8611 Fax: +44(0)118 9505896
Email: info@thimbleby-shorland.co.uk

SALE NOTES

THE SALE WILL BE HELD under the usual Conditions of Sale, which are to be found at the end of this catalogue. In particular, descriptions made verbally or in this catalogue are not guaranteed, including sizes of harness and vehicles.

VIEWING ARRANGEMENTS: All lots will be on view up to and during the auction of the day of sale. Horse- drawn carriages must be in the Market prior to sale day, but most vendors prefer to bring their smaller items early in the morning of the auction. Tuesday is not officially a viewing day but prospective purchasers are welcome to inspect vehicles, although we cannot guarantee the time of their arrival.

BUYERS' NUMBERS: All prospective purchasers are requested to register with the Auctioneers prior to the sale when they will be given a **Buyer's Number** to enable bidding and assist the cashing arrangements. The Auctioneers reserve the right to request a deposit of £500 from customers not known to them upon registration.

PAYMENT for all lots **must be made of the day of sale** and methods of payment are (1) CASH (2) CHEQUES supported by either a cheque guarantee card covering the sum or a letter of reference from your bank. Please note that cheques CANNOT be express cleared on the day of sale (3) BANKERS DRAFT (4) DIRECT DEBIT CARDS such as Switch, Delta or Connect with PIN number (5) CREDIT CARDS with PIN number, which are subject to a 2% premium surcharge. Our bankers are: NATIONAL WESTMINSTER BANK PLC., 13 Market Place, Reading RG1 2EP (IBAN NO GB N WBK 601721 67642977, BIC Code No. NWBKGB 2L). Tel: 0845 6013399. No clearance of purchases will be allowed until satisfactory payment has been received.

A BUYERS' PREMIUM of 7.5% (VAT inclusive at the standard rate) will be added to the purchase price of all lots at this sale.

FOR THE SALE OF CARRIAGES ONLY – AN ADDITIONAL ON-LINE BUYER'S PREMIUM of 3%, plus VAT, will be added to the purchase price of all lots at this sale.

VALUE ADDED TAX: All items consigned by VAT registered vendors are indicated by an asterisk (*), alongside the lot numbers, and VAT at the standard rate will be added to purchasers' accounts in respect of these lots. No VAT will be payable upon the items consigned by unregistered vendors. Any known variation in the VAT status of vendors will be announced by the Auctioneers when selling.

CLEARANCE: All lots should be cleared on the day of sale, unless alternative arrangements are made, and remain at the risk of the purchaser from the fall of the hammer.

INSTRUCTIONS TO BID will be executed with care and judgment by the Auctioneers. Clients who are interested in lots which are due to be offered in more than one section of the sale at the same time are reminded of this free service.

PRIVATE SALES: All lots are accepted on the understanding that they **must not** be sold prior to being auctioned, and any private transactions resulting from the exposure for sale of any items must be conducted through the Auctioneers.

INSURANCE: Carriage House Insurance Services and the National Farmers Union will be in attendance at the sale to effect transit and longer term insurances, which have been devised for carriage owners and drivers.

EXPORT PURCHASERS should ensure that the country of destination has no import or currency restrictions on the goods they wish to purchase. Our normal terms of business otherwise apply and **payment is due in full on the day of sale**. VAT will be charged in the normal way and refunded on proof of exportation. A specific **Export License** is required before export from the UK of any item costing **£39,600** or more, which is at least 50 years old.

CONSUMER PROTECTION ACT 1987: All goods at this auction are second-hand unless otherwise stated.

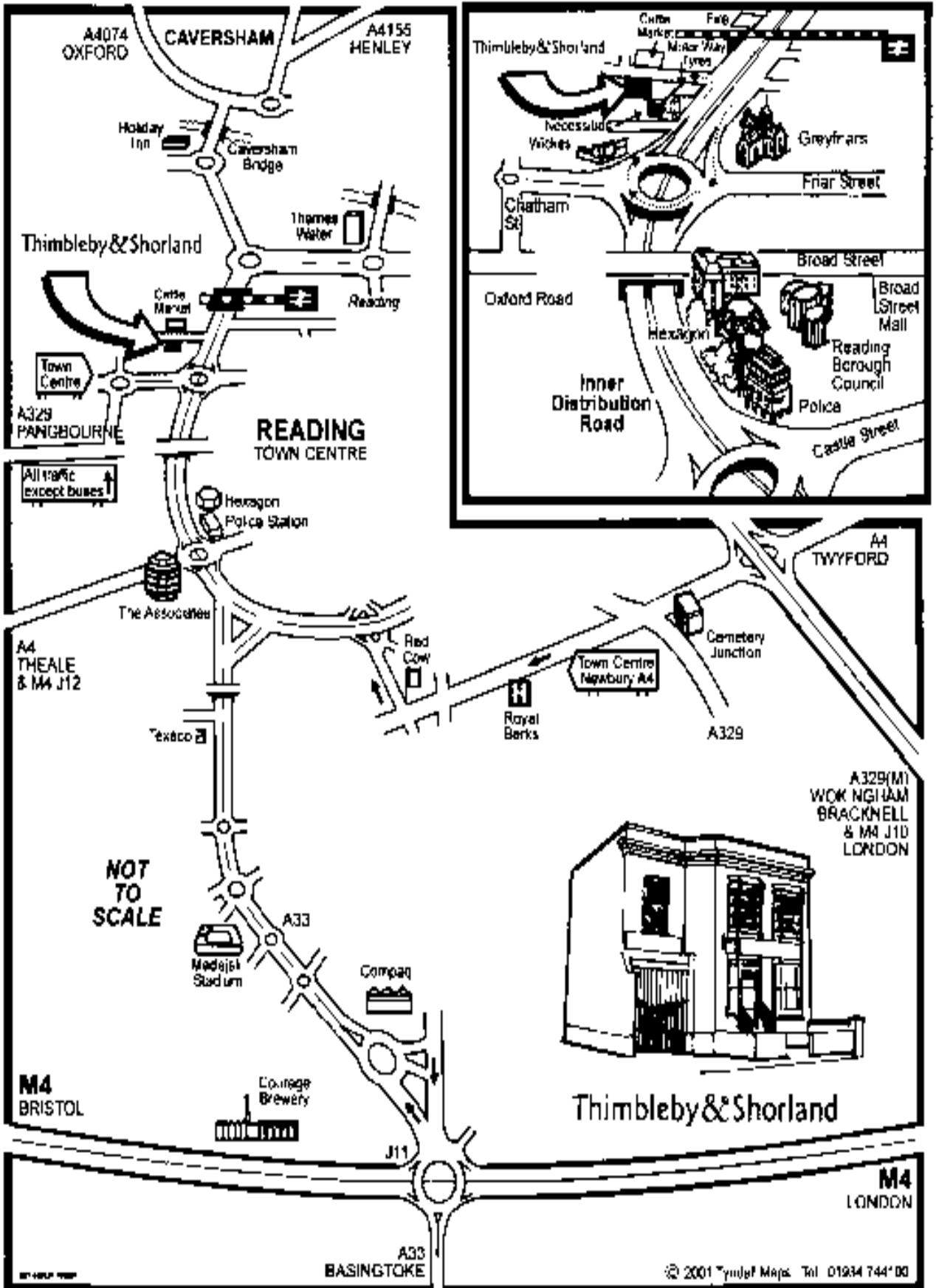
HOTELS in Reading include The Royal County Hotel (Tel: 0118 958 3455), The George (Tel: 0118 957 3445), Holiday Inn (Tel Central No: 0871 423 4876) and Penta Hotel (Tel: 118 958 6222), are all within easy reach of the Market and the Station; The Post House (Tel Central No: 0870 4009067) and The Travelodge, Oxford Rd (Tel No: 0871 9846211), and Hilton Hotel (Tel: 01189 16900) near Junction 11 of the M4; and a Travelodge in central Reading (Tel Central No: 08700 850950). Further accommodation may be available in the surrounding small towns and the Auctioneers will be pleased to advise on other hotels in the area. Clients are reminded that Reading's hotels are often fully booked so please make arrangements well in advance of arriving at the sale. Hotels in walking distance from the Market: Caversham House Lodge (Tel: 01189 589900), Rainbow Corner Hotel (Tel: 01189 588140), Thameside Hotel (Tel: 01189 590135)

REFRESHMENTS are available from the Market Café and the Queens Arms Public House, both located on Great Knollys Street.

CAR PARKING: Due to developments, the size of the Market car park has been reduced. There is a PAY & DISPLAY car park behind the Market which is owned by the Council and patrolled by wardens. Please arrive in good time, particularly with lorries and trailers, to secure a place here. Alternatively, there are a number of other Pay & Display car parks located around Reading town centre. Park & Ride off Junctions 10 & 11 to station (7/8 minutes) approximately 7.30 to 6.30.

Notes

Notes



CONDITIONS OF SALE

1. The highest bidder for each lot shall be the Purchaser, and in the event of any dispute the Auctioneers shall have absolute discretion either to settle such dispute or to re-offer the lot immediately.
2. No person may advance less at a bid than a sum to be named from time to time by the Auctioneer, nor shall any bidding be retracted. The Auctioneer may, without giving any reason therefore, refuse to accept the bidding of any person or persons.
3. All lots are put up for sale subject to any reserve price placed by the Vendors, who may bid for any lot or lots, and may withdraw any lot or lots, either personally or through the Auctioneer or through any other person, as many times as they respectively may think fit.
4. Each Purchaser shall give his or her name and address in writing (if required) to the Auctioneer at the Sale, and pay the full purchase money at the close of the Sale, or, if required, the whole or a portion of the purchase money, as the Auctioneer may determine, during the course of the Sale. If any Purchaser fails to comply with any of these conditions the lot or lots in respect of which such failure is made may, if the Auctioneer thinks fit, be put up again and resold. If upon such resale a lower price is obtained for any of such lots than was obtained on the first sale the difference in price shall be a debt due from the Purchaser in default upon the first sale.
5. No lot or lots shall be removed from the premises until paid for, but each and every lot shall immediately at the fall of the hammer be considered as delivered, and be and remain in every respect at the absolute risk of the respective Purchaser or Purchasers thereof, and shall be removed at the Purchaser's expense after the conclusion of the Sale and taken with all faults or errors of description.
6. The Auctioneers act only as agents for the Vendor(s) and are not responsible for any default by either Vendor(s) or Purchaser. In particular, they shall not be liable to pay the Vendor until payment is received from the Purchaser.
7. No undertaking of the Auctioneers or their employees to take charge of any lots after the sale or to forward them to their destination shall be held to impose, upon the Auctioneers any legal obligation or vitiate any of the foregoing conditions.
8. Purchasers paying by cheque must be prepared, if required, to produce a banker's reference. The Auctioneers reserve the right in their sole discretion to refuse payment by cheque.
9. In all cases of transfer the original Purchaser shall be held responsible for the purchase money.
10. The Auctioneer reserves the right to withdraw or divide any lot or to combine any two or more lots at his sole discretion and to sell in such order as he may think fit.
11. The Auctioneers have described the lots to the best of their ability and belief from information furnished by the Vendors who shall be alone responsible for any error or mis-statement which there may be. The Auctioneers undertake no liability whatever in respect of any faults, deficiencies and errors of any description, oral or printed, nor do they accept responsibility for the authenticity, genuineness, origin, age, condition or quality of any lot and all statements as to these matters whether contained in the catalogue or made orally are statements of opinion only and are not to be taken as being or implying a statement or representation of fact. Any intending Purchaser must satisfy himself by inspection or otherwise as to the correctness of each such statement. The Vendor does not make or give and neither the Auctioneers, nor any person in their employ have any authority to make or give any representation or warranty in relation to any of the lots without the express instructions of the Vendor(s).
12. The Auctioneers accept no responsibility in connection with the commissioning of their staff to bid for any lots. Reserves and commissions given verbally or by telephone are accepted at sender's risk and must be confirmed in writing before the Sale.
13. **THIRD PARTY LIABILITY.** All persons on the Auctioneers' premises before, during or after the Sale shall be deemed to be there at their own risk and with notice of the condition of the premises and of the method of arranging lots and shall have no claim against the Auctioneers in respect of any injury or accident which may occur from any cause whatsoever.
14. If any Purchaser shall fail to comply with the above conditions or any of them, the Auctioneers shall be at liberty to recover in full the amount of the purchase money of the lot or lots bought by such Purchaser together with all interest, costs, charges and expenses, without reference to any delivery or acceptance of the lot or lots, other than the first delivery by the fall of the hammer, or to resell any lot or lots bought by such Purchasers, either by public or private sale, and the full amount of the purchase money at the present sale, or the deficiency (if any) arising from the second sale, together with all interest, costs, charges and expenses, shall be made good by the defaulter, and be recoverable as and for liquidated damages.

Auctioneers: **THIMBLEBY & SHORLAND, READING**

NOTE - Purchasers or their agents are requested to obtain accounts and delivery orders at the Auctioneers' Office before leaving the place of sale and carefully to examine same. The Auctioneers cannot be held responsible for any errors in accounts or delivery orders unless they are notified of such errors on the day of sale and before the lots are removed from the premises.



Thimbleby & Shorland

31 Great Knollys Street, Reading, Berkshire RG1 7HU Tel: +44 (0) 118 950 8611 Fax: +44 (0) 118 950 5896
www.tsauction.co.uk info@thimbleby-shorland.co.uk