

DISPERSAL SALE OF A PRIVATE COLLECTION



Wednesday 14TH September 2011

at 9.30 a.m.

Reading Auction Centre

Great Knollys Street, Reading, Berkshire RG1 7HU



Thimbleby & Shorland

SALE NOTES

THE SALE WILL BE HELD under the usual Conditions of Sale, which are to be found at the end of this catalogue. In particular, descriptions made verbally or in this catalogue are not guaranteed, including sizes of harness and vehicles.

VIEWING ARRANGEMENTS: Viewing is available the day before, 13th September, between 12noon - 4.00pm, and from 8.00am on the day of the sale. There will be limited viewing during the sale.

BUYERS' NUMBERS: All prospective purchasers are requested to register with the Auctioneers prior to the sale when they will be given a **Buyer's Number** to enable bidding and assist the cashiering arrangements. The Auctioneers reserve the right to request a deposit of £500 from customers not known to them upon registration.

Value Added Tax: There will be no VAT added to the hammer price.

PAYMENT for all lots **must be made of the day of sale** and methods of payment are (1) CASH (2) BANKERS DRAFT (3) DIRECT DEBIT CARDS such as Switch, Delta or Connect with PIN number (4) CREDIT CARDS with PIN number, which are subject to a 2% premium surcharge. Our bankers are: NATIONAL WESTMINSTER BANK PLC., 13 Market Place, Reading RG1 2EP (IBAN NO GB N WBK 601721 67642977, BIC Code No. NWBKGB 2L). Tel: 0845 6013399. No clearance of purchases will be allowed until satisfactory payment has been received.

A BUYERS' PREMIUM of 10% (plus VAT at the standard rate) will be added to the purchase price of all lots at this sale.

CLEARANCE: All lots should be cleared on the day of sale, unless alternative arrangements are made, and remain at the risk of the purchaser from the fall of the hammer.

INSTRUCTIONS TO BID will be executed with care and judgment by the Auctioneers. Clients who are interested in lots which are due to be offered in more than one section of the sale at the same time are reminded of this free service.

CONSUMER PROTECTION ACT 1987: All goods at this auction are second-hand unless otherwise stated.

HOTELS: Clients are reminded that Reading's hotels are often fully booked so please make arrangements well in advance of arriving at the sale. Hotels in walking distance of the Market and Station – Crowne Plaza, quote T&S for 10% discount (Tel: 0118 925 9988); Travelodge, Oxford Rd (Tel No: 0871 9846211); Penta Hotel (Tel: 0118 958 6222); Quality Hotel (Tel: 0118 958 3455); The George (Tel: 0118 957 3445); Holiday Inn (Tel Central No: 0871 423 4876); Caversham House Lodge (Tel: 01189 589900); Rainbow Corner Hotel (Tel: 01189 588140); Thameside Hotel (Tel: 01189 590135). Hilton Hotel (Tel: 01189 16900) near Junction 11 of the M4. More local hotels can be found at the back of the catalogue.

REFRESHMENTS are available from the Market Café and the Queens Arms Public House, both located on Great Knollys Street.

CAR PARKING: There is a Pay & Display car park behind the Market which is owned by the Council and patrolled by wardens. Please arrive in good time, particularly with lorries and trailers, to secure a place here. Alternatively, there are a number of other Pay & Display car parks located around Reading town centre. Park & Ride off M4, junctions 10 & 11 to station (7/8 minutes) approximately 7.30am to 6.30pm.

DISPERSAL SALE OF A PRIVATE COLLECTION

approx. 700 horse brasses, 65 shepherd's smock, plus
antique farming hand tools, trophy heads and horns, taxidermy, harness and
many other interesting items

TO BE CONDUCTED BY

Thimbleby & Shorland

AT

**READING AUCTION CENTRE,
GREAT KNOLLYS STREET, READING, RG1 7HU**

ON

WEDNESDAY 14th SEPTEMBER 2011

at 9.30 a.m.

Catalogue £5.00

**Thimbleby & Shorland
Market House
31 Great Knollys Street
READING RG1 7HU**

**Telephone: +44 (0) 118 950 8611
Fax: +44 (0) 118 950 5896
Web site: www.tsauction.co.uk
Email: info@tsauction.co.uk**

***Front cover – Lot 1223
Back cover – Lots 1029, 1031 & 1234***

FORWARD

Mr Malcolm Norris – (1935–2010)

Mr Norris started the collection you see before you in 1969 with a chance find of a horse brass that depicted a wheatsheaf, followed by two smocks in 1979. Having felt he had amalgamated enough artefacts to hold an exhibition, his first showing was at the Cranleigh Agricultural Show in Knowle Park in 1976, with only a small amount of the collection being exhibited. Following the success of this show, Malcolm would periodically exhibit his complete collection at a number of shows and events throughout the country.

The remarkable point about this is that Malcolm learnt to drive in the RAF but never acquired a licence, so he was very reliant on public transport and the good will of family and friends to ferry him to auction houses, antique shops and stalls to build his collection. His purchases were entirely self-funded from his average wage; nothing given or donated!

Malcolm was fiercely proud of his collection, noting that when Maidstone had their Charter Celebrations in 1950 they had one farmer's smock on display even though the last farmer in England to wear a smock lived in the Tenderden area in the fifties. Malcolm's collection of smocks range from plain to ornate, from working to Sunday best, and consisting of ones from Kent, Sussex, Dorset, Lincolnshire, Buckinghamshire and Essex.

He also felt the need to point out proudly, when writing to ask about a show venue, that he had been to the York Museum, Taunton Museum, Hull Museum, Reading Museum of Rural Life, plus many more but had yet to see a better collection than the one he owned.

He held his last show in 1996 in Sevenoaks, Kent before he decided to 'mothball' his collection.

Following his death in 2010, his family have now decided the time has come to sell all of Malcolm Norris's vast and interesting collection of rural artefacts.

HORSE BRASSES

Commencing at 9.30 am

- 1 Pair of triple bell swingers with acorn tops and wooden bases
- 2 Large five bell swinger; plume missing
- 3 Triple bell swinger



- 4 Single bell swinger with plume missing and a swinger with rumble bell stamped No.23
- 5 Large single swinger with crescent and red/blue/white plume and another with three bells and plume
- 6 Large single swinger with three crescents and a red/blue/white plume and another with three crescents and star; most of plume missing
- 7 Two pairs of swingers each with three bells and plumes
- 8 Pair of swingers each with three bells; plumes in poor condition
- 9 Pair of swingers each with three bells; plumes in fairly good condition
- 10 Swinger with three bells; part of plume missing
- 11 Swinger with three bells; part of plume missing and another with three bells and large plume
- 12 Swinger with three bells and red/blue/white plume; in fairly good condition

- 13 Saddle roller with three bell swingers and acorn top



- 14 Pair of swingers each with three bells and acorn tops
- 15 Pair of swingers each with three bells and acorn tops
- 16 Swinger with three discs
- 17 Pair of swingers each with three bells; one clanger missing and missing plumes
- 18 Pair of swingers each with three bells; one bell and acorn top missing
- 19 Swinger with three bells and acorn top
- 20 Swinger with three bells and acorn top
- 21 Swinger with three bells and acorn top
- 22 Royalty swinger with two bells and crown top, set on a wooden base; note different size bells
- 23 Three swingers on a wooden bases – pattern, beehive and raised centre boss
- 24 Two swingers on wooden bases – horse's head within a horseshoe and a galloping horse
- 25 Two swingers on square wooden bases – crescent and a thistle
- 26 Three single swingers and double swingers all with crescents
- 27 Fiver single swingers each with a bell
- 28 Five swingers each with single bells
- 29 Three swingers each with two bells; two with acorn tops
- 30 Three double swingers each with discs
- 31 Three triple swingers; one with base
- 32 Three triple swingers
- 33 Three triple swingers
- 34 Triple bell swinger and two single bell swingers each with acorn tops, all with spikes
- 35 Three swingers and a tumbler, all with spikes

- 36 Five royalty swingers – Queen Victoria, VR 1887, Prince of Wales Feathers and two crowns
- 37 Nickel and brass royalty swinger of Edward VII, with *reg. No. 386031* stamped on reverse and another with *Long Live The King* and two tumblers – cockerel and horse

Please note that all lots are the responsibility of the purchaser at the fall of the hammer

PURCHASERS ARE REMINDED OF THE 10% BUYERS PREMIUM (PLUS VAT AT THE STANDARD RATE) ADDED TO ALL LOTS IN THE SALE

- 38 Two tumblers – tulip centre and square plain disc, plus three swingers - two lyre-shaped and another with crescent
- 39 Four swingers – heart centre, lion, horse's head and pattern
- 40 Six swingers all with horse centres
- 41 Saddle roller with triple bell swingers and a bell each end, small plaque stamped, *F.J Graham. Maker. Oldham Road, Manchester;* terret not fixed on



- 42 Pair of decorative swingers each with a single bell and plume, plus two swingers each with single bells and on wooden bases
- 43 Small double bell swinger and another with bell and thistle top, plus another double bell swinger with plume with each bell stamped *W.Didsbury, Christchurch*
- 44 Four assorted swingers each with single bell and plume
- 45 Pair of double bell swingers each with plumes; some plume missing on one
- 46 Double bell swingers and a single bell swinger each with plumes
- 47 Pair of swingers each with double bells and plume

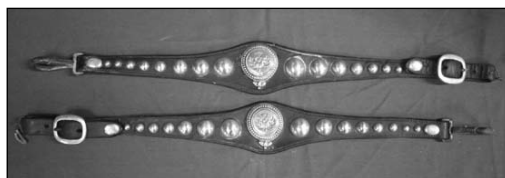
- 48 Pair of swingers each with double bells and plume
- 49 Pair of swingers each with double bells and plume
- 50 Pair of swingers each with double bells and plume
- 51 Pair of swingers each with double bells and plume; one without plume
- 52 Crescent brass stamped *Edward Yells;* with getts
- 53 Crescent brass stamped *Model Farm*
- 54 Crescent brass stamped *Webster, Maker, Thame*
- 55 Decorative collar-shaped brass with round hanger stamped *Thorn Maker Chagford & Moretonhampstead;* with getts
- 56 Crescent brass stamped *Caley Maker Fleet;* with getts
- 57 Crescent brass stamped *J. Holloway*
- 58 Crescent brass stamped *J. Holloway*
- 59 Crescent brass stamped *Caley, Maker, Thame*
- 60 Brass stamped *J.Thomas, Maker, Haverfordwest*
- 61 Brass with scalloped edging, stamped *Weeks, Maker, Okehampton;* with getts
- 62 Brass with scalloped edging, initialled *L&A;* with getts
- 63 Railway brass bearing the railway company initials *NER* – Northern Eastern Railway
- 64 Oval brass with scalloped edge, initialled *G*
- 65 Brass with company, initialled *M.J & Co.*
- 66 Brass with pattern centre stamped *1850* and *Williams*
- 67 Trade brass with round hanger and initialled *TL & S Ltd.* – Thomas Lebon & Sons Ltd, Coal Merchants
- 68 Brass depicting a Staffordshire knot and initialled *N.S & O.T.A*

- 69 Two brasses - Maltese Cross brass with centre lion above a crown and a hunter stamped *Trademark and Nottobebeaten*



- 70 Three brasses – shield, Disraeli and another with red star centre and blue scalloped edging
- 71 Two brasses - a hunter and stamped *Trademark and Nottobebeaten* and a heart-shaped brass with a dove holding an olive branch inside laurel leaves; with getts
- 72 Four brasses of assorted patterns, all with raised boss
- 73 Four brasses of assorted patterns, all with raised boss
- 74 Four brasses of assorted patterns
- 75 Four assorted brasses – *Widdecombe Fair*, beehive, concentric circles and centre diamond with flower
- 76 Laurel wreath shaped brass with Chamberlain and another with Disraeli; with getts
- 77 Four assorted brasses – beehive, circles and two patterns
- 78 Four assorted pattern brasses all with raised centres
- 79 Six assorted brasses all with raised centres
- 80 Six assorted pattern brasses all with raised boss and another
- 81 Four brasses - raised boss surrounded by two rows of perforations, beehive with round hanger but broken, plain with raised boss and scalloped edging and another with raised boss
- 82 Six assorted brasses all with raised centres
- 83 Six assorted brasses all with raised centres; with getts

- 84 Sheffield star brass
- 85 Six assorted brasses all with raised centres
- 86 Six assorted brasses all with raised centres
- 87 Six assorted brasses all with raised centres; with getts
- 88 Five pattern brasses all with raised centres
- 89 Pair of breastplates each with eleven nickel studs, one stamped *Ferguson & Walker, Makers, Perth & B of Earn*
- 90 Two red leather straps each four nickel brasses, buckles and a stud
- 91 Leather breastplate with five nickel brasses – crescent, triple crescent with star and crossbar and horse's head within a horseshoe; with getts
- 92 Breast strap with three nickel brasses each with heart centre surrounded by two rows of perforations, stud and buckle
- 93 Two breast straps one with four nickel brasses; another with six and a brow band with thirty nickel studs with two large plain disc each end
- 94 Two leather straps each with eighteen studs and a centre stud depicting a thistle, buckle and clip



- 95 Pair of leather breastplates each with eight assorted studs
- 96 Breastplate with nine assorted studs and a face piece with five studs
- 97 Pair of face pieces with seven nickel studs on one, five on the other
- 98 Three rein hangers with buckles and studs, large heart brass on leather, another brass on leather and a small leather strap with nickel buckle
- 99 Pair of leather hame plates one with thirteen studs, the other with eleven
- 100 Six assorted brasses each with leather strap on hanger
- 101 Six assorted brasses each with leather strap on hanger
- 102 Six assorted brasses each with leather strap on hanger

- 103 Six assorted brasses each with leather strap on hanger; with getts
- 104 Six assorted brasses with leather tabs
- 105 Six assorted brasses with leather tabs
- 106 Six assorted brasses with leather tabs
- 107 Six assorted brasses with leather tabs
- 108 Six brasses – beehive, harnessed horse, horse with flag, club, Star of David and raised boss and perforations
- 109 Six brasses each with horse's head in a horseshoe and a heart and leather tabs
- 110 Four brasses - heart, diamond and two clubs, plus a leather strap with brass of rearing horse and three studs
- 111 Five brasses and another mounted on a wooden plaque depicting Queen Victoria
- 112 Brass pole head with stamp *F 59*
- 113 Pole head of the Fleur de Lys



- 114 Decorative pole head
- 115 Decorative pole head
- 116 Decorative pole head
- 117 Decorative pole head
- 118 Decorative pole head with cut out initials *DFS*
- 119 Decorative pole head with small star centre
- 120 Small brass pole head
- 121 Brass pole head with cut out hearts and diamond
- 122 Decorative pole head
- 123 Decorative pole head with a shepherd's-type hook on end
- 124 Decorative pole head
- 125 Pole head with a cut out crescent

- 126 Pole head depicting a partridge and anchor, named *Hood Arm*
- 127 Pole head depicting a partridge and anchor, named *Hood Arm*
- 128 Pole head depicting a partridge and anchor, named *Hood Arm*
- 129 Two sets of knitted ear caps
- 130 Three sets of knitted ear caps
- 131 Pair of decorative ear caps; some bobbles and ties missing
- 132 Pair of decorative ear caps



- 133 Brow band covered in red and brown cloth with three rosettes
- 134 Brow band covered in red and brown cloth with three rosettes
- 135 Pair of red/white and blue rosettes
- 136 Pair of yellow/red and blue rosettes
- 137 Pair of yellow/red and blue rosettes; some ribbons missing
- 138 Hackney Carriage badge stamped '*Borough of Swansea 79 Hackney Carriage Driver*' and another *643*'
- 139 Hackney Carriage badge stamped *Grimsby 57 Driver*
- 140 Hackney Carriage badge stamped in red *Hackney Carriage Driver 25*
- 141 Pear-shaped Hackney Carriage badge stamped with number *742*
- 142 Hackney Carriage badge in the form of a Maltese Cross stamped *Labor Day Sept 2 1895*, on the reverse *IUM No.28*
- 143 Bag of assorted old buckles, approx. fifty
- 144 Bag of assorted studs, etc; approx. forty
- 145 Nickel hame plate of three walking horses
- 146 Nickel hame plate of three walking horses
- 147 Nickel hame plate of three walking horses
- 148 Nickel hame plate with centre horse
- 149 Small plain nickel hame plate

- 150 Nickel hame plate stamped *E.E.Green*
- 151 Hame plate on leather stamped *Young Handy*
- 152 Hame plate stamped *T.Dobson*
- 153 Pair of crested nickel rosettes on leather
- 154 Pair of nickel rosettes stamped *FRS*
- 155 Pair of nickel rosettes with blue raised centres
- 156 Three pairs of plain nickel rosettes and another pair with rope edging
- 157 Two pairs of nickel rosettes with raised centres and dog tooth edging
- 158 Two pairs of nickel rosettes – one with star design and the other heart-shaped
- 159 Two single rosettes plus three small horseshoe shaped studs and another *M*
- 160 Pair of small nickel swingers, each with two bells and horseshoe
- 161 Pair of small nickel swingers each with triple disc swingers
- 162 Five assorted nickel tumblers; with spikes
- 163 Five assorted nickel tumblers; no spikes
- 164 Three pattern swingers and a small tumbler; with spikes
- 165 Large tumbler with two bells and a heart, and two other small tumblers; all with spikes



- 166 Five assorted nickel tumblers
- 167 Pair of small spiked swingers each with triple discs
- 168 Four assorted spiked swingers
- 169 Four assorted swingers – a triple bell with wooden base, a triple disc, a double bell and another with a rumble bell
- 170 Spiked terret with red/blue and white plume
- 171 Two tumblers – a cockerel and ball and another with triple crescent and star discs
- 172 Four assorted swingers and a rein terret

- 173 Four assorted swingers and a rein terret
- 174 Two nickel royalty brasses each with crown centres; one with gets
- 175 Royalty nickel brass on leather stamped *Edward Crowned 1902*
- 176 Commemorative nickel brass in the shape of a Lyre, *Jubilee 1887*
- 177 Royalty nickel brass *The Victorian Record 1837-1897*; with gets
- 178 Royalty nickel brass *Victoria The Good 1819-1902*, and *Solid* stamped on the hanger
- 179 Commemorative brass 'Edward VII Crowned 1902'
- 180 Royalty brass *Ealing Victory Horse Parade 1946* showing George VI and Queen Elizabeth
- 181 Nickel brass showing blue cross and stamped *Our Dumb Friends League*
- 182 Five assorted brasses – punch, horse, pattern, shield, thistle and rampant lion
- 183 Two brasses, one heart-shaped in nickel and the other with centre heart and with *185* stamped
- 184 Two large horseshoe shaped buckles
- 185 Five assorted brasses – two harnessed horses, tulip centre, diamond centre and crescent with ten point star
- 186 Australian bullock bell



- 187 Four rumble bells all stamped *Victoria* with no.s 23, 22 and 21 and another on leather unmarked
- 188 Leather strap with two nickel bells, one stamped *WR* and two patterned rumble bells stamped no. 4 and the no. 3
- 189 Seven patterned rumble bells of varying sizes
- 190 Seven patterned rumble bells of varying sizes

- 191 Three rumble bells, one stamped with no. 8 and two bells
- 192 Three rumble bells, two stamped with *The White Cross* and the other *The Sun B&C*
- 193 Seven assorted rumble bells



- 194 Six assorted brasses; with getts
- 195 Six assorted brasses; with getts
- 196 Six assorted brasses, hanger missing off one; with getts
- 197 Six assorted brasses; with getts
- 198 Patterned brass; with getts
- 199 Patterned brass; with getts
- 200 Six assorted brasses
- 201 Six assorted brasses, one stamped *RN.55585* on the hanger
- 202 Brass with snowflake pattern
- 203 Six assorted brasses
- 204 Six assorted brasses
- 205 Six assorted brasses
- 206 Six assorted brasses; with getts
- 207 Six assorted brasses; with getts
- 208 Six assorted brasses; with getts
- 209 Six assorted brasses; with getts
- 210 Patterned brass; with getts
- 211 Six assorted brasses; with getts
- 212 Six assorted brasses; with getts
- 213 Six assorted brasses; with getts
- 214 Six assorted brasses – boxer, whorl and four various patterns
- 215 Brass with perforated centre shield; possibly Cornish
- 216 Six assorted brasses
- 217 Shaped patterned brass
- 218 Crescent brass with wheatsheaf
- 219 Brass of a ring of hearts with reg.no. on the hanger

- 220 Sheffield star stud
- 221 Railway stud *Southern Central Railway*



- 222 Sixteen brewery studs of varying sizes
- 223 Breast strap of brewery studs, buckle and other studs
- 224 Breast strap of brewery studs and brass buckle
- 225 Brass spreader bar
- 226 Hame plate of six brass studs and star brass
- 227 Leather breastplate of four brasses with cream/blue and orange ceramic centres
- 228 Leather breastplate of four brasses with cream/blue and orange ceramic centres
- 229 Pair of tail plates each with four studs
- 230 Pair of tail plates each with heart studs and buckles



- 231 Maker's nose band *A. Walker Saddler, Longton*
- 232 Maker's nose band *Nunnerley Saddler, Oswestry*
- 233 Maker's nose band *W&H Gidden Ltd Makers, Streatham St, Bloomsbury WC*
- 234 Hame plate with bell and five heart studs on leather
- 235 Railway hame plate with steam train
- 236 Railway hame plate with steam train

- 237 Hame plate with thistle and laurel leaves
- 238 Hame plate stamped *God Save The King* and brass studs
- 239 Coal merchant hame plate *Toomers*
- 240 Hame plate mounted on red leather *Tardi*
- 241 Hame plate of three walking horses and *God Save The King* below
- 242 Hame plate stamped *God Save The King*
- 243 Hame plate *Crowned 1902 Long Live The King*
- 244 Hame plate *Long Live The King and Queen 1911 Crowned*
- 245 Hame plate *Edward VII 1901*
- 246 Hame plate stamped *God Save The King* with two crowns
- 247 Hame plate stamped *1837-1901*
- 248 Plain hame plate with three crowns
- 249 Hame plate with centre crown and two raised suns
- 250 Hame plate with centre crown *1837-1887 VR*
- 251 Hame plate stamped *God Save The King* and with crown
- 252 Hame plate stamped *Queen Victoria Diamond Jubilee 1837-1897*
- 253 Hame plate with Victoria's head and two crowns *God Save The Queen*
- 254 Hame plate stamped *God Save The Queen* and three crowns
- 255 Cast intaglio hame plate of a harnessed horse
- 256 Cast intaglio hame plate of a lion and flower designs
- 257 Hame plate with Prince of Wales feathers
- 258 Hame plate with centre wheatsheaf
- 259 Hame plate with Sheffield star
- 260 Hame plate with centre crest
- 261 Hame plate with walking horse
- 262 Hame plate with lion
- 263 Hame plate with walking horse
- 264 Cast intaglio hame plate with lion
- 265 Hame plate with rampant lion
- 266 Cast intaglio hame plate of horse and cart filled with sacks
- 267 Cast intaglio hame plate of horse and cart
- 268 Hame plate on leather with horse's head and two oval studs
- 269 Pattern swinger mounted on brass base
- 270 Pattern swinger on wooden base
- 271 Star centre swinger on wooden base
- 272 Pair of brass rosettes with cream/ blue and orange ceramic centres
- 273 Pair of brass rosettes with swingletrees
- 274 Pair of brass rosettes with rope edging and flower boss
- 275 Pair of brass rosettes stamped *Harrods Ltd*
- 276 Single brass rosette stamped *Council of Exeter*
- 277 Single brass rosette with running horse
- 278 Pair of brass rosettes stamped *LCS – London Cooperative Society*
- 279 Pair of brass rosettes stamped *H.B & C and E.Lee & Son, Contractors & Makers, 242 Bermondsey St, SE*
- 280 Single brass rosette stamped *Cot Land Co.*
- 281 Horseshoe-shaped rosette with centre horse's head
- 282 Three small horseshoe-shaped studs each with horse's head
- 283 Pair of brass coal merchants studs, stamped *Earleys Coal*
- 284 Pair of stag studs



- 290 Hame plate stamped *Mary* with two rosettes either side; centres missing
- 291 Hame plate stamped *Harland of Leeds, Saddler* and two diamond studs
- 292 Hame plate with large brass with ceramic centre and two large oval studs and six small star studs; one missing
- 293 Hame plate engraved *ADA*
- 294 Hame plate engraved *Hero* with two oval studs and buckle
- 295 Hame plate engraved *Victor* with two oval studs and buckle
- 296 Hame plate engraved *Mitchell Co.*
- 297 Cast intaglio hame plate of a horse and cart and two brass buckles
- 298 Hame plate with cut out star design, two heart studs and a buckle
- 299 Hame plate engraved *BCB*
- 300 Hame plate with wheatsheaf and a heart stud
- 301 Hame plate stamped *Victor Templecombe Victor*
- 302 Cast intaglio hame plate of a horse and cart and two diamond studs and buckle
- 303 Pair of leather straps each with sixty nine studs and a horse brass depicting a walking horse
- 304 Pattern swinger
- 305 Swinger with inverted crescent
- 306 Brewery swinger
- 307 Swinger depicting ploughman and horse
- 308 Pattern swinger
- 309 Pattern swinger
- 310 Pattern swinger
- 311 Pattern swinger
- 312 Swinger with shield centre
- 313 Pattern swinger
- 314 Large swinger depicting *The Lazy Carter*
- 315 Pattern swinger
- 316 Swinger with star centre
- 317 Swinger with blue/ cream and orange ceramic centre
- 318 Swinger with quarto foil
- 319 Swinger with five point star on concentric circles and perforated surround
- 320 Swinger with star centre
- 321 Bell-shaped swinger with raised boss and acorn top
- 322 Pattern swinger
- 323 Wheatsheaf swinger
- 324 Swinger with cut out diamond
- 325 Club swinger
- 326 Shaped swinger with star centre
- 327 Pony swinger with star centre
- 328 Pair of brasses with orange ceramic centres and brass boss



- 329 Brass with blue ceramic centre and raised boss
- 330 Pattern brass on leather
- 331 Brass with inverted crescent
- 332 Horseshoe-shaped brass with horse's head; with getts
- 333 Horseshoe-shaped brass with frog; with getts
- 334 Brass with royal blue ceramic centre and perforated surround
- 335 Brass on leather with white and gold ceramic centre and perforated surround
- 336 Three small horseshoes within horseshoe-shaped brass, double hanger; with getts
- 337 Brass of nine small horseshoes circling a bridle horse's head
- 338 Brass of nine small horseshoes circling a bridle horse's head
- 339 Horseshoe-shaped brass with frog detail
- 340 Brass of three overlapping crescents; with getts
- 341 Unity brass; with getts
- 342 Small horseshoe-shaped brass with centre horse head
- 343 Large horseshoe-shaped brass with centre horse head
- 344 Horseshoe-shaped brass with three small centre horseshoes
- 345 Brass with centre horse's head slightly raised centre
- 346 Brass with centre horseshoe and horse's head

- 347 Crescent brass with cut out design and raised boss
- 348 Pony brass shaped as an inverted crescent
- 349 Hame plate on leather on Queen Victoria 1837-1987 *Record Reign* with two oval and heart studs
- 350 Pony brass on leather with brass buckle and thirty three studs; some missing
- 351 Breast strap with four brasses, one stamped *G.Irwin, Saddler, Blackburn* and six small studs and two buckles
- 352 Brass on leather with central stag; with getts
- 353 Three small studs with anchors on a piece of leather
- 354 Crescent brass on leather with raised boss
- 355 Crescent brass on leather and shield stud
- 356 Leather strap with maker's stud *Allard Maker Cheadle & Wetley, Rocks* and two large buckles each end
- 357 Pattern brass on leather with buckle
- 358 Oval brass of Chamberlain and stamped *One Great African Nation Under The British Flag*
- 359 Breast strap with six brasses and buckle
- 360 Royalty brass with crown centre and stamped 1837-1887; with getts
- 361 Royalty brass with crown centre and dog tooth edging, stamped *Victoria Jubilee 1837-1887*; with getts
- 362 Royalty brass with crown centre, stamped 1837-1887 *Jubilee*
- 363 Royalty brass with Victoria centre, stamped *Accession 1837 V.R 1887 Jubilee*
- 364 Royalty coronation brass depicting two flags, stamped *George 5th Crowned 1911*
- 365 Royalty brass with centre crown, stamped *Edward VII Crowned 1902*, reverse stamped no. 211
- 366 Royalty brass with scalloped edge, crown centre, stamped *GR 1911 God Save The King*
- 367 Royalty brass with centre crown, stamped *Edward VII Crowned 1902*
- 368 Royalty brass of Edward VII, stamped *Crowned 1911*; with getts



- 369 Royalty brass depicting two flats, stamped *George V Crowned 1911*, with reg. no. on hanger 354494
- 370 Royalty brass depicting two flags, stamped *George V Crowned 1911*, with reg. no. on hanger 354494
- 371 Royalty brass of Queen Victoria stamped *Victoria Jubilee 1837-1897*; with getts
- 372 Royalty brass with centre crown, stamped *God Save The King 1902*; with getts
- 373 Royalty brass of Queen Victoria, stamped *Diamond Jubilee 1837-1897*
- 374 Maltese Cross brass of Queen Victoria, stamped *Diamond Jubilee 1837-1897*
- 375 Royalty brass with dog tooth edging, centre king, stamped *God Save The King*
- 376 Lyre-shaped royalty brass with centre crown, stamped *George V*
- 377 Horseshoe-shaped royalty brass with Queen Victoria; with getts
- 378 Royalty brass with centre crown, stamped *Jubilee*; with getts
- 379 Maltese Cross royalty brass of Queen Victoria, stamped *Diamond Jubilee 1837-1897*; with getts
- 380 Heart-shaped royalty brass with crown centre, stamped *Queen Jubilee 1887*; with getts
- 381 Royalty brass patterned with crown, star and moons with perforated edging
- 382 Crescent royalty brass with centre crown on leather stamped *Jubilee 1837-1887*; with getts
- 383 Royalty brass with crown centre, stamped *Jubilee* surrounded with laurel wreath; with getts

- 384 Royalty brass with tulip centre, stamped 1874 and surrounded by two rows of perforations
- 385 Queen Victoria brass
- 386 Royalty brass with crown centre, stamped V 1887; with getts
- 387 Maltese Cross royalty brass with Queen's head, stamped *Diamond Jubilee 1837-1897*
- 388 Royalty brass of George V surrounded by a row of perforations



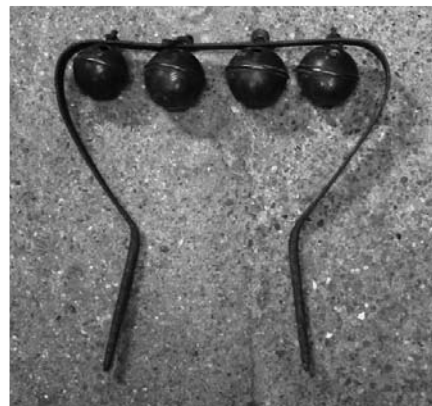
- 389 Horseshoe-shaped brass with king
- 390 Royalty brass with crown centre, with good detail; with getts
- 391 Royalty brass with Victoria's head in centre; with getts
- 392 Royalty brass stamped *Edward VII Crowned 1902*; with getts
- 393 Royalty brass of Edward VII and dog tooth edging, stamped *God Save The King 1902*; with getts
- 394 Brass of the Maltese Cross with Edward VII, stamped *Edward VII Crowned June 1902*, with double hanger; with getts
- 395 Royalty brass with crown centre; with getts
- 396 Heart-shaped royalty brass with star and pattern, stamped 1877; with getts
- 397 Royalty brass stamped *ER* and number 335 on reverse; with getts
- 398 Crescent brass with four point star and Prince of Wales Feathers; with getts
- 399 Royalty brass with crown centre, stamped *Jubilee 1887*; with getts
- 400 Royalty brass with crown centre, stamped *Victorian Jubilee 1837-1887*; with getts
- 401 Royalty brass with Maltese Cross with Victoria's head, stamped *Born 1819, Married 1840, Crowned 1888 and Jubilee 1887*; with getts

- 402 Royalty brass with central crown encircled by seven crowns, stamped *Crowned 1911*
- 403 Royalty brass with stamped out crown, VR 1883; with getts
- 404 Royalty brass with centre crown, stamped V.1887.R; with getts
- 405 Royalty brass of Queen Victoria, stamped *The Victorian Record 1837-1897*
- 406 Horseshoe-shaped royalty brass with Queen Victoria; with getts
- 407 Royalty brass with George V, stamped *God Save The King and George V*; with getts
- 408 Bells-shaped brass with bell swinger; with getts
- 409 Brass with initials *GVR* cut out
- 410 Bell-shaped brass with missing bell; with getts
- 411 Commemorative brass stamped *John Edginton, Great Exhibition Contractor and Crystal Palace 1851*, and on reverse of hanger with *reg.no 960528*
- 412 Royalty brass of George and Mary, stamped *George V & Queen Mary Crowned 1911*
- 413 Heart-shaped brass with Prince of Wales feathers; with getts



- 414 Crescent brass with centred sheaf of wheat; with getts
- 415 Crescent brass with central horse; with getts
- 416 Royalty brass on leather with sepia photo of George 5th
- 417 Cast brass with central rearing horse; with getts
- 418 Heraldic lion on heart-shaped brass
- 419 Brass with windmill
- 420 Brass with windmill

- 421 Brass with raised lions face and surrounded by perforations
- 422 Oval brass with Chamberlain, stamped *One Great African Nation Under The British Flag*; with getts
- 423 Shaped brass with central walking horse
- 424 Brass of a Fusilier
- 425 Crescent brass with centre star; with getts
- 426 Brewery brass; with getts
- 427 Brass with central walking horse
- 428 Brass with dog tooth edging and a face within a sun burst
- 429 Timber merchant brass with tree; with getts
- 430 Cast intaglio brass of wheatsheaf
- 431 Brewery brass with barrel
- 432 Sheffield star; with getts
- 433 Tulip-shaped brass; with getts
- 434 Cast intaglio brass of walking horse
- 435 Brass with thistle surrounded by laurel leaves
- 436 Brass of seven ovals and a round hanger
- 437 Brass with four-point star
- 438 Brass with Prince of Wales feathers
- 439 Cast intaglio brass depicting a horse surrounded by a row of perforations
- 440 Heart-shaped brass with horse's head; with getts
- 441 Brass with swift surrounded by perforations
- 442 Brass from Rams Brewery, Wandsworth; with getts
- 443 Brass of rifleman
- 444 Brass with seated cat surrounded by perforations
- 445 Brass with a fox's head; with getts
- 446 Brass with a fox's head; with getts
- 447 Patterned brass; with getts
- 448 Brewery barrel brass; with getts
- 449 Crescent-shaped brass with six-point star; with getts
- 450 Cast intaglio brass of clock face showing 7 o'clock (clocking-off time)
- 451 Heart-shaped brass with heart, diamond and club; with getts
- 452 Heraldic prancing lion on heart-shaped brass; with getts
- 453 Inverted crescent brass with five-point star and Egyptian figure head
- 454 Brewery brass with lion and scalloped edging
- 455 Hide-shaped brewery brass with barrel and raised boss; with getts
- 456 Brass with goat surrounded by perforations; with getts
- 457 Brewery barrel brass; with getts
- 458 Shield-shaped brass with shield centre surrounded by ring of flowers and leaves
- 459 Heart-shaped brass with raised horse's head
- 460 Brass with flower design
- 461 Sheffield star brass
- 462 Brass with sun burst and face; with getts
- 463 Brass with nine elms; with getts
- 464 Brewery brass with barrel surrounded by perforations
- 465 Brass shaped by acorns and leaves with central leaf; with getts
- 466 Brass with oak branch of acorn and leaves
- 467 Brass with phoenix and scalloped edging
- 468 Hide-shaped brass with flower and leaf design
- 469 Brass with trout and serrated edge
- 470 Plain shield-shaped brass
- 471 Plain brass with thistle design
- 472 Brass with Prince of Wales feathers surrounded by perforations; with getts
- 473 Belfry with three large bells and numerous studs; 19" high x 20" long
- 474 Belfry with four bells of varying sizes and stud; 19" high x 19" long
- 475 Belfry with four patterned rumble bells each initialled *RW* – Robert Wells; 12" high x 12" long



- 476 Belfry with five brass bells and two oval studs; 19" high x 23" long
- 477 Sleigh belfry with three bells each with three clangers; 8.5" high x 8.5" long
- 478 Large patterned no.28 rumble bell on spike initialled *RW* – Robert Wells; 17" long
- 479 Six assorted pattern brasses
- 480 Six assorted pattern brasses
- 481 Six assorted brasses; with getts
- 482 Brass with eight cut out diamonds
- 483 Sheffield star brass with rivet centre boss and dog tooth edging
- 484 Six assorted brasses; with getts
- 485 Shaped patterned brass; with getts
- 486 Six assorted brasses; with getts
- 487 Six assorted brasses; with getts
- 488 Six assorted brasses
- 489 Four assorted pattern brasses and two royalty - head of Queen Victoria and another marked with a crown
- 490 Patterned brass
- 491 Patterned brass
- 492 Five assorted pattern and one royalty brass - Record *Reign 1837 – 2361897*
- 493 Brass with diamond design
- 494 Six assorted pattern brasses
- 495 Six assorted pattern brasses and one royalty *The Victorian Record 1837- 1897*
- 496 An original brass with diamond centre surrounded by eight clubs, unclear reg. no. on hanger
- 497 Six assorted brasses – two tulips, swan, pattern, rifleman and a royalty *Victoria The Good 1819 – 1901* with small leather tab
- 498 Brass with star centre surrounded by clubs
- 499 Patterned brass
- 500 Patterned brass
- 501 Six assorted brasses; with getts
- 502 Six brasses – two acorns, Isle of Man, cross and two patterns; with getts
- 503 Nine elm brass; with getts
- 504 Red leather strap with six rumble bells and two buckles
- 505 Leather strap with six bell and numerous studs
- 506 Three cow bells each stamped *Success to Horse Teams and J*, sizes 4", 3.5" and 3"
- 507 Three large patterned bells stamped with no.s 28, 26 and 14 and initialled *RW*
- 508 Three large patterned bells stamped with no.s 20, 10 and 4 and initialled *RW*
- 509 Three large patterned bells stamped with no.s 20, 7 and 5 and initialled *RW*
- 510 A large and three smaller bells all patterned, initialled *RW*, one bell stamped no.26
- 511 A large and three smaller bells all patterned, initialled *EP, RE, MK* and *GM*
- 512 Three patterned bells, initialled *EP, ES* and *CM*
- 513 A large and two smaller bells all patterned, initialled *WH Exon, RW* and *GW*
- 514 Large bell and two smaller ones on a leather strap each patterned, initialled *CM*
- 515 Large bell with oak leaves stamped no. 8 and two smaller ones each with a horse's head
- 516 Three bells, two stamped *GT Wigan* and the smaller one stamped no.5 and *RW*
- 517 Three bells, two initialled *ES* and the other *CO*
- 518 Two pairs of large cart rosettes
- 519 Pair of large cart rosettes
- 520 Pair of large cart rosettes
- 521 Pair of large cart rosettes
- 522 Two large cart rings and one small
- 523 Five large cart rosettes
- 524 Two lead reins with chain ends – one with thirty heart studs and beehive brass, the other with eighteen heart studs
- 525 Large red leather strap with eleven assorted studs, buckle and ring
- 526 Lead rein with rope end, seventeen assorted studs and a strap with nineteen heart studs

- 527 Two pairs of rosettes with blue/white and red ceramic centres



- 528 Pair of beehive rosettes with red and blue ribbon
- 529 Pair of floral rosettes
- 530 Pair of small rosettes with raised boss
- 531 Two pairs of brass rosettes
- 532 Two pairs of rosettes – one in wood with raised boss, the other with phoenix and stamped *Gang Forward*
- 533 Pair of beehive rosettes with ribbons and two ceramic centres
- 534 Pair of rosettes with orange ceramic centres and two with floral design
- 535 Pair of studs stamped *CSD & Co.*
- 536 Two pairs of rosettes – one with blue/white and red ceramic centres, the other orange ceramic
- 537 Bag of assorted studs
- 538 Seven beehive rosettes with bells
- 539 Four pairs of assorted rosettes
- 540 Four pairs of assorted rosettes
- 541 Four pairs of assorted rosettes
- 542 Four pairs of assorted rosettes
- 543 Four pairs of assorted rosettes
- 544 Four pairs of assorted rosettes
- 545 Seven assorted studs/rosettes
- 546 Six assorted brasses – elephant, Jumbo, landmark, deer, train and lion
- 547 Six assorted brasses – rampant lion, swan, phoenix, fox, train and St. George and Dragon
- 548 Six assorted brasses – two railway brasses, Isle of Man, lion, thistle and boars head
- 549 Six assorted brasses – two railway brasses, two stags heads, swan and lion
- 550 Six assorted brasses – two stags, two rampant lions, Noah's Ark and railway

- 551 Six assorted brasses – two horses, anchor, railway, squirrel and Lazy Carter
- 552 Six assorted brasses – two lions, Pegasus, stag, pelican feeding her young and phoenix
- 553 Six assorted brasses – Queen Elizabeth I, harp, bee, two railway brasses and an elephant
- 554 Six assorted brasses – prancing horse, star, hedgehog, harnessed horse, seated cat and a pelican feeding her young
- 555 Six assorted brasses – phoenix, bull, squirrel, lion, prancing horse and train
- 556 Six assorted brasses – sporting dog, two prancing horses, anchor, pelican and Lazy Carter
- 557 Six assorted brasses – lion, horse, shell, dog, Staffordshire knot and crescent with flower centre
- 558 Six assorted brasses – prancing horse, ship, thistle, plough, shell and Staffordshire knot
- 559 Six assorted brasses – stag's head, railway, horse's head, lion's head, anchor and harnessed horse
- 560 Six assorted brasses – Staffordshire knot, stag, three horses and a cow
- 561 Six assorted brasses – five various horses and a thistle
- 562 Six assorted brasses - five various horses and a thistle
- 563 Six assorted brasses - five various horses and a peacock
- 564 Six assorted brasses - five various horses and a rifleman
- 565 Six assorted brasses – four lions, stag and a dog
- 566 Six assorted brasses – four various horses, Staffordshire knot and a cow
- 567 Four royalty brasses, two on straps
- 568 Six royalty brasses, one on a leather strap

- 569 Four royalty brasses and one commemorative
Festival of Britain, 1951



- 570 Six brasses – twelve-point star, harnessed horse, acorn, heart, pattern and hide-shaped with raised boss
- 571 Six brasses – harnessed horse, pattern, twelve, seven and eight point star and hide-shaped with raised boss
- 572 Six brasses – harnessed horse, hide-shaped, six hearts, walking horse and two acorns
- 573 Six brasses – barrel, harnessed horse, hide-shaped, heart centre, plain and seven point
- 574 Six brasses – heart-shaped, eight point star in crescent, twelve point star, harnessed horse, heart centre and Prince of Wales feathers
- 575 Six brasses – harnessed horse, six-heart brass, wheatsheaf, hide-shaped with boss, tulip centre and three crescents
- 576 Six brasses – pattern, shield with red centre, Unity, hide-shaped with boss, twelve point star and a Lyre
- 577 Six brasses – barrel, heart centre, pattern, Unity, quatrefoil and heart-shaped
- 578 Six brasses – club, diamond, heart, harnessed horse, running horse and hide-shaped with boss
- 579 Six wheatsheaf brasses
- 580 Six brasses – barrel, tulip centre, two heart centres, heart-shape, crescent with star and harnessed horse
- 581 Six brasses – tulip centre, heart, hide-shaped with heart centre, five point star, diamond and Lyre
- 582 Six brasses – shield centre, crescent with star, hide-shaped with heart, quatrefoil, heart centre and heart-shaped

- 583 Six brasses – hide-shaped with boss, twelve point star, heart-shaped, quatrefoil, heart centre and barrel
- 584 Six brasses – quatrefoil, acorn, heart-shaped and three patterned
- 585 Six brasses – star centre, heart-shaped, pattern, petal centre and two hearts
- 586 Six brasses – two heart-shaped, twelve point star, tulip centre, petal and diamond
- 587 Six brasses – two with heart centres, barrel, three oval, diamond and tulip centre
- 588 Six brasses – three pattern, tulip centre, hide-shaped and heart
- 589 Six brasses – two hearts, two tulip, plain and twelve point star with leather strap
- 590 Six horseshoe shaped brasses each with horse's head
- 591 Six horseshoe shaped brasses each with horse's head
- 592 Six brasses – four horseshoe-shaped with horse's head and two with horseshoes
- 593 Four brasses with ceramic centres – two with blue/white and orange, one blue and another tan
- 594 Three brasses each with ceramic centres – one orange, the other blue, white and orange



- 595 Six horseshoe shaped brasses with horse's head
- 596 Six horseshoe shaped brasses with horse's head
- 597 Six brasses – three crescents, single crescent, crescent with star and three horseshoe-shaped
- 598 Six brasses – four crescents and two horseshoe-shaped
- 599 Six brasses – crescent with star, two horseshoes, centre horse, crescent with star and boss, inverted crescent with three moons
- 600 Six brasses – horseshoe, two crescents one with star, horse centre, one with three small crescents and horse's head

- 601 Six brasses – two crescents and four horseshoes
- 602 Six crescent brasses
- 603 Six brasses – three single crescents, triple crescent, horseshoe with horse centre and one with thirteen heads
- 604 Six brasses – two single crescents, two horseshoes, triple crescent and crescent with star
- 605 Six brasses – two horseshoe-shaped, triple crescent, single crescent, horse's head and crescent with star
- 606 Six assorted crescent brasses
- 607 Five assorted crescent brasses
- 608 Six plain disc swingers
- 609 Six assorted swingers
- 610 Six assorted swingers
- 611 Six plain disc swingers
- 612 Six assorted swingers
- 613 Six assorted swingers



- 614 Six plain disc swingers
- 615 Six swingers – crescent, two pattern, horseshoe and two with raised boss
- 616 Six assorted patterned swingers
- 617 Four assorted pattern swingers and two plain
- 618 Fiver swingers with raised boss and one shield
- 619 Six swingers – four patterned, star and horseshoe
- 620 Four crescent swingers and two star
- 621 Six horse related swingers
- 622 Assorted swingers of two lions, two tulips and two acorns
- 623 Six star patterned swingers
- 624 Three tulip swingers and three shields

- 625 Eight swingers – two tulip, two stars, two quatrefoils, heart and diamond
- 626 Eight swingers – five horse related, thistle, three-crescent and a flower
- 627 Three hame plates, one with two shield studs
- 628 Three hame plate, two with beehive rosettes
- 629 Two shaped hame plates on leather with centre design
- 630 Three shaped leathers each with five studs
- 631 Two shaped leather straps each with a brass and studs
- 632 Two shaped leathers each with stud, one with hame plate
- 633 Two leather straps with brasses, buckles and 'D' rings
- 634 Four leather straps, some studs missing and breast plate with studs
- 635 Breast plate with studs and four leather straps with brasses
- 636 Red leather breast plate with seven crescent brasses and eleven studs, another strap with two brasses and fourteen studs and small rein hanger with studs
- 637 Red leather brow band with twenty five studs and another with a brass and studs
- 638 Two breast plates each with royalty studs, crown and studs
- 639 Long leather strap with six brasses, breast plate with three brasses and studs, leather strap with studs and a rein hanger
- 640 Pair of red leather straps with yellow trim each with four crescent brasses
- 641 Four leather straps each - three with four brasses the other with five



- 642 Three leather straps - one with three brasses the other two with four
- 643 Four leather straps - three with four brasses the other with five
- 644 Three breast straps - two with three brasses, the other with five brasses and a stud
- 645 Two long brown leather straps each with ten brasses
- 646 Two long brown leather straps each with seven brasses
- 647 Two red leather rein hangers with yellow trim, each with rosettes and two studs
- 648 Two red leather rein hangers with yellow trim, each with rosettes and two studs
- 649 Red leather breast strap with four brasses and buckles
- 650 Three leather straps each with four brasses
- 651 Three leather straps - one with five brasses, one with three and another with two and two studs
- 652 Three leather straps – one with three brasses, one with four and another with five
- 653 Four hame plates each with three walking horses
- 654 Four plain hame plates
- 655 Six plain hame plates
- 656 Six plain hame plates
- 657 Six plain hame plates
- 658 Six plain hame plates
- 659 Six plain hame plates
- 660 Five hame plates, four on leathers
- 661 Five hame plates, four on leathers
- 662 Two red leather straps – one with three studs, the other with eight
- 663 Three leather straps, each with brasses and studs
- 664 Five leather straps each with brasses
- 665 Seven leather straps each with brasses
- 666 Five leather straps each with brasses and studs
- 667 Two long straps each with crescent brasses and studs, and a pin cushion with brass
- 668 Five leather straps with brasses and studs
- 669 Breastplate with studs
- 670 Part bridle with studs and rosettes with maker's stud *G & Sons Ltd.* and another marked *Ryall & Cornell, Makers, 98 Spa Rd, Bermondsey*
- 671 Scottish part bridle with white stud, maker's stamp *A.Henderson, Saddler, Keith*
- 672 Two leather hausens each with two shield studs
- 673 Two leather hausens each with two shield studs
- 674 Two leather hausens each with heart and oval studs
- 675 Four leather hausens each with studs and a brass and one plain leather
- 676 Leather bridle with bit and maker's stud, *Gibson & Robertson, Edinburgh*
- 677 Leather bridle with bit and maker's stud, *A.Whitelaw, Gallowgate, Glasgow*
- 678 Pair of bridles with bit and reins and whitemetal tumbler and brass, maker's stud, *Cheyne, Saddler, New Deer*
- 679 Leather bridle with maker's stud *A.R.Gray, Saddler, Uddingston*
- 680 Bridle with bit and brow band with studs marked *UD – United Dairies*
- 681 Leather bridle with brass studs and brow band with studs marked 'SW'
- 682 Leather bridle with bit and whitemetal studs
- 683 Two large bridles with brass studs on blinkers
- 684 Decoration made of horse brasses

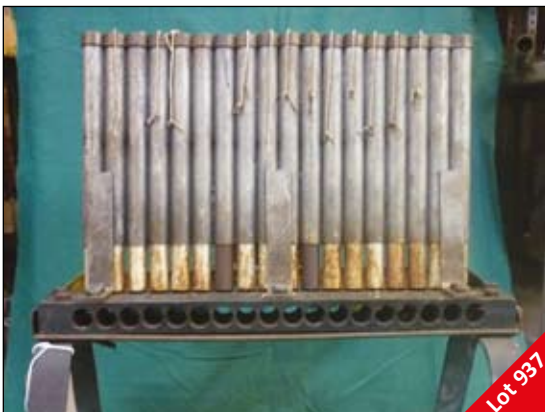


- 662 Two red leather straps – one with three studs, the other with eight
- 663 Three leather straps, each with brasses and studs
- 664 Five leather straps each with brasses
- 665 Seven leather straps each with brasses
- 666 Five leather straps each with brasses and studs

PURCHASERS ARE REMINDED OF THE 10% BUYERS PREMIUM (PLUS VAT AT THE STANDARD RATE) ADDED TO ALL LOTS IN THE SALE

It is the responsibility of the purchaser to compare the description in the catalogue with the item as seen prior to bidding. Neither the auctioneer nor vendor will be responsible for incorrect descriptions









FARM HAND TOOLS & SUNDRIES

Commencing at 10 am

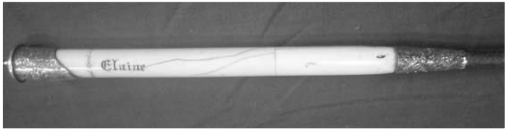
- 701 Pair of aluminium water jacks
- 702 Assortment of old horse bits
- 703 Pair of wooden scales
- 704 Three wooden trugs
- 705 Tin cow bell, 12" high, a sheep's bell and another smaller
- 706 Large bell, 8" high
- 707 Pair of ex-shop display horse's heads



- 708 Three ex-shop display truckles of cheese
- 709 Ex-shop display of a plastic bull's head
- 710 Ex-shop display of a pig's carcass with Danish stamped on the side
- 711 Ex-shop display of a pig's carcass and two legs of ham
- 712 Ex-shop displays of a leg of beef and ham
- 713 Three cast iron buckets
- 714 Coal skuttle
- 715 Pair of brass/wood black/red hames
- 716 Pair of double cased no.2 brass hames with acorn tops
- 717 Pair of nickel hames stamped *E.J.P & S Ltd, Clerkenwell*
- 718 Pair of nickel hames stamped *E.J.P & S Ltd, Clerkenwell*
- 719 Pair of double cased no.2 brass hames
- 720 Pair of no.2 double cased nickel hames with acorn tops
- 721 Brass/copper coaching horn
- 722 Assortment of old horse bits

- 723 Broadcast seed sower *DLK – The Aero Registered*
- 724 Two axes and two cleavers
- 725 Three axes
- 726 Small horn
- 727 Three round metal pig feeders
- 728 Assorted yokes
- 729 Carcass hand barrow initialled *WG*
- 730 Carcass hand barrow
- 731 Carcass hand barrow
- 732 Old bird cage
- 733 Pair of large mounted cow horns
- 734 Pair of horns
- 735 Pair of cow horns
- 736 Pair of horns
- 737 Pair of horns
- 738 Pair of horns
- 739 Pair of horns
- 740 Pair of horns
- 741 Pair of mounted horns
- 742 Pair of mounted antlers
- 743 Pair of mounted horns
- 744 Two hand saws
- 745 Saw with horn handle, ear punch and badger tongs
- 746 Nine old wooden skittles and two wooden balls
- 747 Two old heavy horse collars
- 748 Four wooden containers – *Peck, Half Gallon, Quart*; one not stamped
- 749 Three anti-suckling calf collars
- 750 Anti-suckling collar or similar
- 751 Coat hook made from a crook and bell
- 752 Horn trainers and a pair of horn cups
- 753 Two calf muzzles
- 754 Tail clip (to stop the milkman/maid being flicked)
- 755 Pair of railway lamps
- 756 Navy velvet gamekeeper's jacket with gold crested buttons, four pockets on the outside and two large inside.
- 757 Two veterinary dousing pumps
- 758 Three pairs of small brass hames
- 759 Pair of large wooden hames
- 760 Five pit pony bridles

Whips

- 762 Corded whip with brass top
- 763 Lady's delicate riding crop with engraved pattern, possibly silver gilded, *Reg. April 4th 1850*, engraved *Elaine* on ivory or bone handle; approx 31"
- 
- 764 Lady's delicate crop engraved possibly silver gilt, *Ellam, Maker, London*
- 765 Dog whip, with engraved flower design on butt cap; approx. 31"
- 766 Corded riding whip with brass ferrule, Jockey's head engraved on end; approx. 18" long
- 767 Wooden hunting whip with leather lash, antler handle and silver hallmarked ferrule, marked *J.L-W, Tabley House, Cheshire 1928, Brigg London*; length approx 54"
- 768 Hunting crop with weighted end
- 769 Corded leather with whitemetal mounts engraved *RJL* on band, engraved *G Holland, Maker, 6 Holywell Lane, Shoreditch, London – RJ Lee*; approx. 48"
- 770 Corded whip with whitemetal ferrules, stamped *Made in England*; approx. 84"
- 771 Corded whip with brass butt cap and two ferrules; approx. 30"
- 772 Corded with whitemetal ferrule and butt cap; approx. 42"
- 773 Corded leather whip with whitemetal butt cap; approx. 42"
- 774 Corded whip with whitemetal butt cap marked *Made in England*; approx. 42"
- 775 Holly whip with silver mounts; leather damaged handle, no lash; approx. 72"
- 776 Holly whip with silver ferrules, engraved with silver hallmarks and stamped *DJ Head, Hartburn Hall, Stockton-on-Tees*; approx. 60"
- 777 Holly whip with silver hallmarked butt cap and silver ferrules; leather rotted on handle, no lash; approx. 60"
- 778 Holly whip with whitemetal ferrules, stamped on wooden handle with leather grip, stamped *Swaine & Adeney, Makers – To the King and Queen, 185 Alexander, Piccadilly, London*; approx. 48"
- 779 Holly whip with silver ferrule stamped *Callow*, with paper label *London 1894*, crown and initialled *MEJ*; approx. 60"
- 780 Holly whip with whitemetal bands (Brigg) and leather grip, initialled *DJH* leather grip; approx. 60"
- 781 Corded whip with brass ferrules and butt cap marked with shield; approx. 60"
- 782 Corded whip with whitemetal butt cap; approx. 72"
- 783 Holly whip, initialled *ED 1885* and *Narwell* on handle; approx. 72"
- 784 Corded whip with whitemetal ferrules and leather grip; approx. 72"
- 785 Holly whip with nickel ferrules and leather grip; approx. 60"
- 786 Corded whip with brass butt cap and twelve ferrules; approx. 78"
- 787 Corded whip with brass cap and thirteen ferrules; approx. 84"
- 788 Holly whip with leather grip, brass butt cap and ferrule, stamped *The Corona Warranted*
- 789 Holly whip with leather grip, whitemetal butt cap and ferrules
- 790 Holly whip stamped *Swaine & Adeney, Makers to the Queen and Prince of Wales, 185 Piccadilly, London – S Waite & Sons, Edinburgh*; approx. 60"
- 791 Whip with whitemetal butt cap and ferrule; approx. 48"
- 792 Holly whip stamped *Swaine & Adeney* with whitemetal butt cap
- 793 Leather corded whip with whitemetal ferrules; approx. 60"
- 794 Corded whip with leather grip and brass ferrule
- 795 Walking stick containing a horse measurer; approx. 36"
- 796 Rosewood/ebony whip initialled *HMR* and marked *JHW*, gold or silver; approx. 72"

Farm Hand Tools & Sundries

- 797 Mahogany whip reel with horseshoe decoration
- 798 Set of lawn boots
- 799 Hessian/leather nose bag and a poultice boot
- 800 Two leather horse blind folds
- 801 Set of horse hobbles
- 802 Set of lawn boots
- 803 Pair of leather pony boots and two Ox shoes
- 804 Set of lawn boots
- 805 Stallion shield, metal medical horse gag and muzzle and stirrups
- 806 Eight ceramic pheasant eggs
- 807 Four wooden bird callers
- 808 Measuring mug for livestock feed marked *Joseph Thorley Ltd, Kings Cross, London N1 By Appointment*, a pottery measuring mug marked *Biggs Dipping Composition for Ten Sheep, Leicester House, Great Dover St, Borough London* and a metal food rotation bowl, stamped *Blue Cross, Balanced Rations, 3½ lbs*
- 809 Set of scales stamped *Herbert & Sons, West Smithfield, London, to weigh 250lbs, Reg. No.541309* and small sack scales
- 810 Pair of corduroy leggings, pair of corduroy trousers and two pairs of corduroy breeches
- 811 Two pairs of breeches and a jacket
- 812 Three pairs of leather gaiters and another in suede
- 813 Two pairs of moleskin leggings, two waistcoats and a pair of spats
- 814 Pair of brown leather gaiters
- 815 Butcher's tile depicting a Bull, 12" x 12"
- 816 Six butchers' meat cleavers
- 817 Two butchers' saws and a larger saw
- 818 Two hog scrapers and another set in bone
- 819 Four assorted cattle ear punches
- 820 Shepherd's stake hammer and a pole hammer
- 821 Two shepherds' lanterns; one candle/one electric and a shepherds' brazier
- 822 Five metal hooks, two pokers and a large two pronged fork
- 823 Terracotta feeder
- 824 Ceramic water bird feeder
- 825 Mannequin head and wig
- 826 Black bowler hat by *Dunn & Co., London* and two coachmens' cockades
- 827 'Diplomat' black bowler hat by *Christy's, London*
- 828 Eight low flat bowler-type hats
- 829 Black bowler hat and a soft brim hat
- 830 Black bowler hat by *Austin Reeds of Regent St.*
- 831 Large stone trough, 30" x 20" and a smaller one, 30" x 18"
- 832 Large stone trough, 30" x 20"
- 833 Assorted heavy horse tack
- 834 Harness cleaning rack
- 835 Leather horse muzzle
- 836 Horse muzzle
- 837 Shire headcollar with brass buckles
- 838 Gamekeepers' swingle sticks
- 839 Poacher/fishing priests
- 840 Tethering auger
- 841 Two leather bottles
- 842 Leather bag containing wood and metal pegs
- 843 Two large wooden costrels; one engraved *RJLF 1899*
- 844 Two large wooden costrels
- 845 Four assorted wooden costrels
- 846 Five assorted wooden costrels
- 847 Ex-display advertising beehive
- 848 Horse muzzle, leather and metal and two leather horse medicine bottles



- 849 One sack hook, horticultural knife and two cauterising scissors
- 850 Two kicking blocks and shackles
- 851 Five horn mane combs
- 852 Leather and glass sweat scraper initialled *WS* and two metal mane combs
- 853 Pair of decorative metal mane combs
- 854 Pair of decorative metal mane combs
- 855 Pair of decorative metal mane combs
- 856 Pair of decorative metal mane combs *VR*
- 857 One game carrier with carved fox head
- 858 A game hanger and two pheasant carriers
- 859 Three drawing knives with bone handles
- 860 Straw split mill
- 861 Three planting tweezers in their original box from *H.J.Jones, Rycroft Nursery, Hither Green, Lewisham, SE*
- 862 Two multi-cut shears; one with plaque *The Astor Garden Shears, Manufactured by The Flexa Lawn Mower Co.Ltd., Woking, England*
- 863 Glass cucumber trainer/straightener
- 864 Two pairs of wooden shoe patterns
- 865 Three stainless steel bits, 6.5", 7" and 8"
- 866 Three old wooden bits and two metal bits
- 867 Five assorted bits
- 868 Four assorted bits, 6.5", 7.5", 6" and 5.5"
- 869 Three assorted bits, one stamped *NSY B14, 6", 5" and 7.5"*
- 870 Three hoof trimmers
- 871 Three hoof trimmers
- 872 Three tail dockers
- 873 Three tail dockers, one by *Tennant of Edinburgh*
- 874 Three tail dockers, one stamped *Arnold & Some* and the other *Charlton*
- 875 Six castrating clamps
- 876 Four veterinary implements
- 877 Bull leading bar and two other items
- 878 Four various balling irons
- 879 Four various balling irons
- 880 Five balling irons
- 881 Six old medical horseshoes
- 882 Six old medical horseshoes
- 883 Knife and pinches castrating tool
- 884 Two blacksmith's dogs
- 885 Horse singer
- 886 Horse singer
- 887 Horse singer
- 888 Horse singer
- 889 Horse singer
- 890 Farrier's fly swot, burnishing brush and a horse singer
- 891 Four tail combs
- 892 Two curry combs; one with wooden handle and marked *Jockeys Choice, No.166*
- 893 Three curry combs, one with wooden handle
- 894 Three sweat scrapers and two clippers; one clipper marked *W.Clark*
- 895 Three tooth rasps
- 896 Two tooth rasps
- 897 Three mouth gags
- 898 Two medical boots, breaking bridle and small leather tool
- 899 Three balling and two pill guns
- 900 Brass/wood and veterinary implement
- 901 Veterinary pill dispenser
- 902 Two balling irons, curved scissors with case and metal hook
- 903 Three hessian girth straps and shaft support chain
- 904 Two drenching horns
- 905 Five grease horns; one initialled *ES* and the other *IR*
- 906 Two small side saddle trees, possibly apprentice pieces or salesman samples
Two coachman's cockades now with ref 1114
- 907 Pruning knife manufactured by *Saynor, Cooke & Ridal, Sheffield* and an asparagus knife engraved *18th July 1926*
- 908 Four horse bits
- 909 Brass hoof pick with measurer and another with leather case
- 910 Two folding hoof picks and another with wooden handle, one stamped *E.E.Wells*
- 911 Four cheese samplers

912 Four cheese samplers



913 Five cheese samplers

914 Four wooden cheese samplers

915 Set of fleames in a leather case

916 Fleame in leather case and four others

917 Five assorted fleames

918 Bit attachment

919 Five balling guns

920 Five balling guns



921 Horses' hoof with shoe and an advertising shoe, *Horseshoes Ltd, 6 & 7 Ethelburgh House, London EC, and Lighter, Cheaper Non-Slipping, Lasts Longer*, possible a salesman's piece

922 Pair of children's shoes mounted on a block, possibly apprentice piece or salesman's sample

923 Two pairs of leather child's shoes with metal studs and small brass studs and a pair of leather child's boots

924 Two pairs of leather children's shoes

925 Pair of lady's leather ankle boots and a pair of men's shoes with metal studs to the soles

926 Two pairs of hob nail boots and a pair of dress boots

927 Two pairs of metal boot savers

928 Small wooden stool, 14" high and two three-legged milking stools; one wooden and the other metal

929 Display of pig nose rings and keys

930 Three pig scrapes with hooks

931 Lark spit

932 Lark spit

933 Two asparagus knives with horn handles

934 Potato dibber and potato rake

935 Clapper-type bird scarer and two harvest horn bird scarers

936 Three bird scarers

937 Bird scarer

938 Basket weaver's shave

939 Three sickles

940 Three sickles

941 *Unigate* money bag and straw bag

942 A United Dairies milkman's overall in black/grey stripe, button with breast pocket embroidered *UD*

943 Pair of parrot beak pruners

944 Rush lamp

945 Thatcher's ridge needle

946 Thatcher's ridge needle

947 Thatcher's ridge needle

948 Two reaping hooks

949 Two wheelwright's travellers

950 Two sack hooks

951 Two wimbrels

952 Three wimbrels

953 Dock weeder

954 Draw knife/spoke shave

955 Hazel splitter

956 Two well hooks; one double ended

957 19thC willow break for basket making

958 Sack grabs

959 Old root lifter and spoke shave

960 Four harvest barrels; bands loose

961 Four harvest barrels; bands loose

962 Four costrels; bands loose

963 Three costrels; bands loose and another complete but fallen apart

964 Three assorted decoy pigeons

- 965 Three assorted decoy pigeons
- 966 Three assorted decoy pigeons
- 967 Three assorted decoy pigeons
- 968 Three assorted decoy pigeons
- 969 Three assorted decoy pigeons
- 970 Three assorted decoy pigeons
- 971 Three assorted decoy pigeons
- 972 Drag shoe
- 973 Metal cut out sign *S.Weeks, 18 Lenham, E.Kent*
- 974 Five assorted sheep bells of varying sizes



- 975 Six assorted sheep bells of varying sizes
- 976 Three assorted clucket sheep bells with yokes
- 977 Three assorted clucket sheep bells with yokes
- 978 Four assorted clucket sheep bells with yokes
- 979 Five assorted clucket sheep bells with yokes
- 980 Four assorted sheep bells
- 981 Four assorted bells stamped with no.s 7, 6, 4, and 2
- 982 Four sheep bells of varying sizes
- 983 Five sheep bells of varying sizes
- 984 Four sheep bells of varying sizes
- 985 Four assorted sheep bells – two stamped *Robert Wells no. 13 and 15*, two stamped *I.B* one of which is also initialled *TH*
- 986 Five assorted bells
- 987 Five assorted bells – four stamped with no.s 5, 8, 10 and 12, another stamped *James Barwell, no.01, 3½" in*
- 988 Five assorted bells, each stamped with no.s 13, 12, 11 and 10
- 989 Five assorted bells – two stamped with no.s 5 and 7
- 990 Four wooden handled branding irons – *F, MJ, G and MG*
- 991 Five wooden handled branding irons – *G, EG, GS, CA, GF and GR*

- 992 Pair of sheep spring shears, docking iron, hoof clippers and clippers with leather case and farriers' apron
- 993 Seven assorted spring sheep shears
- 994 Seven assorted spring sheep shears
- 995 Six assorted spring sheep shears
- 996 Pair of large sheep shears, another and pair of large scissors
- 997 Three assorted sheep bells
- 998 Four assorted sheep bells
- 999 Four assorted sheep bells
- 1000 Three docking irons
- 1001 Three docking irons
- 1002 Four horn branding irons
- 1003 Four horn branding irons
- 1004 Five butchers' meat cleavers
- 1005 Butcher's steel with brass ornate handle, 15.5" long
- 1006 Butcher's steel with brass handle, 17" long
- 1007 Two-man bolt killer and one other
- 1008 Humane gun
- 1009 Three wooden Rutter's twitches
- 1010 Bull leading bridle, metal headcollar for cattle, chain neck collar and a pair of lead horn trainers
- 1011 Four sets of horse shackles
- 1012 Four carcass hangers
- 1013 Four carcass hangers
- 1014 Four bull nose clamps
- 1015 Five assorted nose clamps
- 1016 Seven assorted nose clamps
- 1017 Five assorted nose clamps
- 1018 Seven assorted nose clamps
- 1019 Small leather muzzle, pair of lead horn trainers, castration clamp and an ear punch
- 1020 Hedge trimmer and three wooden dibbers and one metal
- 1021 Two brass gas jets, one stamped *Harry Mason, Birmingham*
- 1022 Two metal cat scarers
- 1023 Pair of brass ferret muzzles

1024 Aluminium calf feeder



1025 Pair of blacksmiths pliers, medical horseshoe, hoof trimmer with horn handle and a metal clamp by *Follows and Bate, Ltd* and a wooden shield advertising Blacksmiths

1026 Three horns

1027 Red harness bracket

1028 Nine assorted goat and cow bells, one is stamped *Chiantel Fondeur, 1878 Saignelegier*

1029 Pair of falcon hoods and set of bells

1030 Stallion bit, 10"

1031 Humane killer

1032 Fisherman's live bait box

1033 Rope halter with eyelets

1034 Leather pad

1035 Leather eye/leg pad for a horse and two brow bands

1036 Leather rigid lead rein

1037 Leather stretcher for carrying carcass

1038 Eel cleave, 67" long



1039 Eel cleave

1040 Metal badger tongs, 36" long

1041 Turnip chopper and a dock lifter

1042 Two iron dibbers with 'D' handles

1043 Large wooden dibber

1044 Clay spade, ditching spade and ferreting spade

1045 Clay spade and a ditching spade

1046 Wooden badger tongs and a potato ridger

1047 Large potato fork and shovel

1048 Three iron dibbers with 'D' handles

1049 Breast plough, hand tool and a root crop sampler

1050 Three bull poles/leaders

1051 Two bull poles/leaders

1052 Two bull poles/leaders

1053 Hay tester with leather case

1054 Hay tester with leather case

1055 Hay tester in leather case

1056 Old Anglian ditching slough, clay spade and turnip digger

1057 Three bull poles/leaders

1058 Long handled shears, dock lifter and a wooden sieve

1059 Clay spade, shove and tool

1060 Wooden corn flail and a threshing flail

1061 Weed hook, shepherd's fold bar and hand tool

1062 Rotary seed drill, 60"

1063 Aluminium container stamped *Smiths* with metal bar across and a wooden handle and two straps

1064 Feed scoop

1065 Wooden saddler's clamp

1066 Hand-held breast plough

1067 Two wooden yokes

1068 Five wooden yokes

1069 Axe, metal grate and large shears

1070 Wooden trug and a wicker basket with wire bottom

1071 Wooden Ox yoke

1072 Collar attached to wooden bar and a metal pole with a hook on each end

1073 Two barrel stands and a shave

1074 Old bull mask

1076 Black leather pouch with strap, impression of bulls head and small brass plaque

1077 Mole implement and weighted stick

Traps

- 1087 Three large metal animal traps and one wooden
- 1088 Assortment of vermin traps
- 1089 Large wooden trap with lids
- 1090 Two large man traps
- 1091 Mole trap
- 1092 Five assorted wood/wire traps for mice, etc and wooden tongs
- 1093 Four assorted wood/wire traps including a Norfolk deadfall trap



- 1094 Three large animal traps including a Norfolk deadfall trap
- 1095 Five assorted traps
- 1096 Five assorted traps
- 1097 Five assorted traps – chocker trap, scissor mole trap and three gins
- 1098 Five assorted gin traps
- 1099 Five assorted gin and pole traps
- 1100 Six assorted traps including pole traps
- 1101 Five assorted gin and pole traps
- 1102 Three mole traps
- 1103 Ten assorted vermin straps
- 1104 Large man trap
- 1105 Four wire traps and one small wooden trap
- 1106 Two mole traps

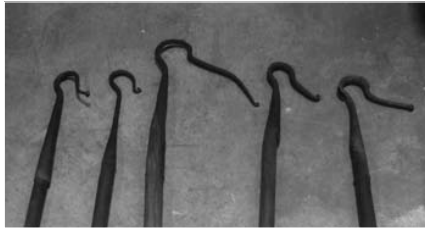
Display Cabinets

- 1107 Shark skin covered box containing six pairs of silver cockfighting spurs dated 1755 (details written inside box lid). Plus two cards with Rules of Cockfighting, dated 1888 and a handwritten card with details of diet fed to fighting cocks
- 1108 Display case entitled Cockfighting containing: two bunches of steel spurs, six pairs of steel spurs, three single steel spurs, three single silver spurs initialled, *J.H, R.A and I.S.*, protection pads, saw for removing spurs and a travelling box for equipment
- 1109 Glazed display case of old Judges and Stewards Show Badges
- 1110 Display board of *Old Veterinary Instruments*
- 1111 Three wooden glazed cabinets
- 1112 Two glazed display notice boards
- 1113 Two wooden and glass display cases
- 1114 Two small glazed display cases
- 1115 Display case containing old auction notices and receipts such *Heyford Station GWR – Sale of Fat Stock – Dec 18 1894; Contagious Diseases, Linlithgow – 30 Sept 1886; Contagious Diseases, Linlithgow – 19 June 1885; Sutton St James, Grass Land – 6 April 1895; Walton Wood Est, Auction – 1st Dec 1840; Lamb’s Land Farm, Sale of Sussex Cows – July 26th 1890; Allotments Medley’s Charity, Tydd St Mary; Sheep Stealing – Three Guineas Reward; Richard Garrett & Sons Ltd – Estimate; Hints on Butter Making – May 1894; Page of receipt Blacksmiths – 1789* plus many more
- 1116 A glazed display cabinet
- 1117 Long display cabinet measuring 58” long x 17” wide x 8” deep

**PURCHASERS ARE REMINDED OF THE 10%
BUYERS PREMIUM
(PLUS VAT AT THE STANDARD RATE)
ADDED TO ALL LOTS IN THE SALE**

Shepherds' Crooks

- 1118 Shepherds' Crooks
- 1119 Seven assorted shepherds' crooks
- 1120 Five shepherds' crooks
- 1121 Five shepherds' crooks
- 1122 Five shepherds' crooks
- 1123 Five shepherds' crooks
- 1124 Five shepherds' crooks
- 1125 Five shepherds' crooks
- 1126 Five shepherds' crooks



- 1127 Five shepherds' crooks
- 1128 Four shepherds' crooks
- 1129 Two shepherds' crooks and one dipping crook
- 1130 Three shepherds' crooks
- 1131 Walking stick, 60"
- 1132 Shepherd's umbrella
- 1133 Three decoy pigeons/ducks
- 1134 Four decoy pigeons/ducks
- 1135 Four decoy pigeons/ducks
- 1136 Four decoy pigeons/ducks
- 1137 Four decoy pigeons/ducks
- 1138 Metal jaw clamp

Smocks

- 1146 Brown cowman's smock circa 1871, from the county of Essex
- 1147 White smock with intricate embroidery to the collar and sleeves
- 1148 A Carter's linen smock from the county of Suffolk, circa 1880, embroidery to the collar and bodice
- 1149 Long reversible cream smock with buttons to the front and back of the neck
- 1150 A fairly plain, long brown reversible smock with buttons to the front and back of neck
- 1151 Long cream smock with embroidered collar and bodice, two pockets with buttons
- 1152 Long beige reversible smock with intricate embroidery to the bodice, collar and sleeves
- 1153 Long brown reversible smock with embroidered shoulders and collar which are fixed into position with small blue buttons. Small name tag on inside collar *E or G Banks*
- 1154 Child's cream smock with brown and yellow embroidery on the bodice, collar and cuffs and small pearl buttons
- 1155 Light brown reversible smock with embroidered collar and cuffs
- 1156 Long cream reversible smock with five mother of pearl buttons at the neck and buttons on the cuff
- 1157 Large cream reversible smock with intricate embroidery to the bodice and collar
- 1558 Brown smock with buttons to the back, front and cuffs
- 1159 Reversible beige smock with intricate embroidery to the bodice, collar and two pockets
- 1160 Long beige smock with three buttons to the neck opening and two pockets; fairly plain design
- 1161 Long cream smock with five buttons and intricate embroidery to the bodice, large high collar and to the two pockets
- 1162 Blue linen reversible smock, two pockets and two buttons on each cuff
- 1163 Child's smock with mother of pearl buttons
- 1164 Coat-type smock with ten pearl buttons down the front, two on each cuff, two pockets and the collar kept in position with buttons
- 1165 Long cream reversible 'v' neck smock with embroidery on the collar and yoke

- 1166 Long cream coat-type smock with two pockets, eight buttons down the front and two on each cuff
- 1167 Long cream reversible linen smock, button fixing at the neck to the back and front and a button on each cuff
- 1168 Long beige linen smock with embroidered collar and bodice
- 1169 Long brown heavy linen smock with flannel padding sewn to the inside of the bodice, hook and eye fixing to the back of the neck and two mother of pearl buttons to each cuff
- 1170 Long cream reversible smock with embroidered yoke and shoulders
- 1171 Long beige reversible smock with two brass buttons on each cuff
- 1172 Long beige reversible smock with embroidered collar and shoulders and two buttons on each cuff; one button missing
- 1173 Long cream smock with two buttons on each cuff and no. 8 and K with a crown embroidered on the shoulders
- 1174 Brown smock with mother of pearl buttons to the front and back of neck
- 1175 Long beige smock with intricate embroidered collar and side panels with two buttons on each cuff and one at the neck
- 1176 Long beige reversible smock with embroidered collar and shoulders
- 1177 Large smock with button on each cuff; few missing buttons down the front
- 1178 Very fine linen plain white smock with small button on each cuff, possibly from county of Surrey; large size
- 1179 Long brown smock with large embroidered collar being kept in position by small glass buttons, two pockets and two buttons on each cuff
- 1180 A small fitting long reversible white smock with two buttons on each cuff
- 1181 Long beige reversible smock, fairly plain, buttoned at the front and back of neck and three buttons on each cuff; two missing
- 1182 Long beige smock buttoned at the neck and two buttons on the cuff
- 1183 A small fitting reversible beige smock with small button at the neck and one on each cuff
- 1184 Very beautiful coat-type beige smock with very intricate embroidery on the large collar, bodice has three rows of nine pearl buttons with larger buttons down, two on each cuff, two pockets each with three mother of pearl buttons and four buttons on the collar
- 1185 Long beige coat-type smock intricately embroidered with nine buttons down the front, two on each pocket and cuffs and five on the collar
- 1186 Long beige smock with large embroidered collar, brass buttons on each cuff; two missing
- 1187 Long beige linen smock with deep 'v' neck, embroidered collar, pockets and cuffs
- 1188 Long reversible beige linen smock with intricate embroidery on the collar and cuffs
- 1189 Long beige reversible linen smock with embroidered collar and two buttons on the cuffs
- 1190 A large fitting, reversible Sussex shepherd's smock with three mother of pearl buttons to the back and front of neck and one on each cuff, herringbone embroidery on the collar. A label attached says '*In the book, A Song for all Seasons, written by Bob Copper. There is a photo called Rottingdean Worthies, Mus Moppet, a retired shepherd is wearing an identical one to this*'
- 1191 Reversible smock with two side pockets, three mother of pearl buttons to the neck and on the cuffs
- 1192 Beige smock with red collar and red edging to the cuffs each with a button and a button fixing on the back
- 1193 Reversible beige smock of thick linen with embroidered collar and buttons to the front and back and on the cuffs
- 1194 Long reversible white smock with intricate embroidery to the collar and three buttons on the cuffs
- 1195 Light brown smock coat with eight buttons down the front and two on the cuffs with a larger collar protecting the shoulders
- 1196 Long reversible smock with embroidered collar
- 1197 Large and fairly plain reversible white smock; buttons missing

- 1198 A very pretty beige reversible smock of fine linen with light blue embroidery to collar, cuffs and pockets each with small button, four buttons to the neck opening front and back; missing buttons; small fitting and very feminine style, possibly a shepherdess smock
- 1199 Long fawn reversible linen smock with two pockets
- 1200 White smock with delicate embroidery to 'v' neck, collar and cuffs, each with one button
- 1201 A slim fitting long white smock with intricate embroidery to the back and front of the bodice, collar and two large pockets
- 1202 Long blue linen reversible smock, two buttons on each cuff; not in very good condition
- 1203 Beige reversible smock with embroidered collar and two buttons on each cuff
- 1204 Long reversible beige smock with embroidered collar fixed in place with mother of pear buttons
- 1205 Fawn reversible smock made of thick linen with delicate embroidery
- 1206 Long white reversible smock made of heavy linen with embroidery to the bodice, shoulders and cuffs
- 1207 Mustard coloured reversible smock made of thick cotton with large plain collar, embroidered bodice with button at the neck back and front
- 1208 Long reversible smock made of very fine linen, with embroidered yoke and collar
- 1209 Blue linen smock with one pocket, embroidered in brown stitching with four metal buttons to the neck and two on each cuff
- 1210 A small fitting beige reversible smock with embroidered yoke and collar and a button on each cuff
- 1211 Long fawn reversible smock with two pockets, very detailed embroidered collar and cuffs, each with two buttons and buttons at the back and front of neck

Taxidermy

- 1221 Stuffed sheep and a two-headed lamb
- 1222 Mounted stuffed head of a Welsh black
- 1223 Mounted stuffed head of a bull, plaque inscribed *Shot at Chillingham Castle, 31-XII-1923 by A.W.Milburn*
- 1224 Mounted stuff head of a bull or cow of White Park cattle
- 1225 Stuffed rams head
- 1226 Glazed display cabinet of four stuffed fox cubs
- 1227 Glazed display cabinet of a two-headed calf
- 1228 Display case of a pair of jackdaws, one black and the other albino; approx. 21" high x 19" wide x 8" deep. Glazed panels broken
- 1229 Display case of a rabbit's head; approx. 9" high x 9" wide x 4" deep
- 1230 Display case of a Lapwing; approx. 14.5" high x 13.5" wide x 6.5" deep
- 1231 Display case of a Snipe; approx. 12" high x 13" wide x 5.5" deep
- 1232 Skull of a Jacobs sheep and a mummified cat
- 1233 Mounted fox head



- 1234 Mounted head of a Jacobs sheep
- 1235 Head of a Jacobs sheep
- 1236 Glazed display cabinet with Kestrel; approx. 17" high x 13" wide x 5.5" deep
- 1237 Glazed display cabinet with Goshawk; approx. 27" high x 13.5" wide x 10" deep
- 1238 Glazed display cabinet with an Albino Crow; approx. 15.5" high x 13" wide x 5.5" deep
- 1239 Glazed display cabinet with Kestrel; approx. 17" high x 13" wide x 5.5" deep

Kitchenalia

- 1249 Wooden bucket and some butter pats
- 1250 Wooden bucket and large wooden spoon
- 1251 Large cream ceramic bowl measuring 18.5" dia. and another smaller
- 1252 Large round sifter, enamel flour bin, wooden container, wood and metal keg
- 1253 Two bell-metal skillets stamped *Coxtaunton* and *Wasbrough*
- 1254 Three sets of wooden butter pats
- 1255 Two sets of wooden butter pats and a butter curler
- 1256 Two wooden spoons, one with mould on the handle
- 1257 Assorted horn spoons, one with a whistle on the end and a horn cup with leather strap
- 1258 Ten assorted horn cups
- 1259 Curd strainer, one wood and one metal
- 1260 Pork pie dolly
- 1261 Collection of eight wooden shortbread moulds
- 1262 Set of large butter pats and a butter mould marked *Gander Bros. Dairymen*
- 1263 Three Dorset owls or Pills of varying sizes
- 1264 Three Dorset owls or Pills of varying sizes
- 1265 Two sets of butter pats and a butter curler
- 1266 Three measuring jugs, one of which is stamped $\frac{1}{2}$ pint
- 1267 Curd separator
- 1268 Ham stand marked *G.Rushbrooke (Smithfield Ltd)* and a ham knife
- 1269 Small pottery egg warmer
- 1272 Two milk cans, large one stamped *TW Broom, Sondes Place Farm, Dorking* and the smaller *LG Sharp, Westbury Farm*
- 1273 Cheese press with small plaque *Storrar's Successors, Chester*
- 1274 Cream funnel and bowl
- 1275 Three cream separators *The Creamsep, The Churn Company, Hailsham, England; 14.5" and 11" diameter*
- 1276 Three brown assorted bowls
- 1277 Five metal spoon separators
- 1278 Balance scales by *Salter*
- 1279 Metal cheese press, a cheese cutter and sampler
- 1280 One baker's shovel, mushroom sack repairer and feed scoop
- 1281 Mincer
- 1282 Victorian cast iron inglenook griddle by *Kendrick*
- 1283 Wooden safety egg box with eggs
- 1284 Wooden safety egg box with eggs
- 1285 Enamel and tin measuring bowls
- 1286 Butcher's chain mail glove and a Steel
- 1287 Oval cutter, two pork pie dollies and a sausage maker
- 1288 Metal bar possible for hanging pots
- 1289 Three assorted bowls



- 1270 Two *Matteson's* dishes for pressed meat
- 1271 Two milk cans, large one stamped *TW Broom, Dorking* and the smaller *A Bunford, Twynham Dy*

Enamel Signs, Pictures & Prints

- 1298 Framed document of the sale of Gillingham Manor Estate; 22.5" x 30.5"
- 1299 Enamel advertising sign by the RSPCA; 21" x 22.5"
- 1300 Enamel sign advertising: *Spillers Osoko The Paramount Dog Food*; 12" x 12"



- 1301 Enamel sign by the *National Allotments Society*; 8" x 13"
- 1302 Enamel sign by the *National Allotments Society*; 8" x 13"
- 1303 Enamel sign by the *National Allotments Society*; 8" x 13"
- 1304 Framed advertised auction; 11" x 17"
- 1305 Small framed print by *G.J.C. Kirby* of a robin and snowdrops
- 1306 Pair of framed prints by *G.J.C. Kirby* of a peregrine with a wood pigeon and the other of lapwings
- 1307 Pair of framed prints by *G.J.C. Kirby*, one of a snowy owl and the other of a hawk with a rabbit
- 1308 Pair of framed prints by *G.J.C. Kirby*, one of a hawk and blackbird and the other of an eagle with a fish
- 1309 Pair of framed prints by *G.J.C. Kirby*, one of starling and the other of a baby owl
- 1310 Pair of framed prints by *G.J.C. Kirby*, one of a hawk and another
- 1311 Pair of framed prints by *G.J.C. Kirby*, one of a hawk and another, and an unframed print of a snowy owl
- 1312 Framed ink drawing of a cock fighting scene; 10.5" x 11"
- 1313 Pair of framed pictures drawn by H Alken of cock fighting: *Set Too, Fight, Throat and Death* by C.R. Stock

- 1314 Pair of prints of fighting cocks
- 1315 Enamel advertising sign *Eggs New Laid on Lever's Feed*
- 1316 Black and white mounted photo of three woodmen; 40" x 30"
- 1317 Picture of a Shire and foal and another of a goat in harness
- 1318 Four posters, two entitled *British Sheep Breeds, Distribution of Breeds and Rare Breeds*
- 1319 Advertising poster entitled: *Ovum Thorley's Poultry Spice*; 59" x 39"; in two pieces, very fragile
- 1320 Four posters, two entitled *Picture Guide to European Livestock, Poultry World 80 Breeds and Windmills*
- 1321 Two unframed sepia photos of a goat cart carrying children, approx. 24" x 18"
- 1322 Framed sepia photo of a shepherd and his dog; needs reframing, approx. 27" x 22" and a large photo of a workman
- 1323 Framed sepia photo: *Mr Alfred G. Vanderbilts Coach 'Venture' – Changing Horses at Capel on the road to Brighton, 1914*; approx. 20" x 18"
- 1324 Framed photo of fruit/veg workers: *Packing, Loading & Despatching, King Garden, Dumfries*; approx. 27.5" x 22.5"
- 1325 Framed sepia photo of children dancing around the maypole; approx. 16" x 19.5"



- 1326 Framed photo of harvesting; approx. 16 3/4" x 15"
- 1327 Framed photo of a group of young men – *Mrs Reeds, Rosedene Stud*; approx. 23" x 18"
- 1328 Framed photo of a champion sheep: *Laughton Ringleader*; approx. 22" x 21.5"; needs reframing
- 1329 Framed photo of two milk carts; approx. 30.5" x 25"

- 1330 Framed enlarged wood engraving of the Chillingham Bull; approx. 22.5" x 18"
- 1331 Framed photo of a horse and landau with coachman and livery boy; approx. 22.5" x 18"
- 1332 Framed sepia photo of *James Lee, Sheep Dipper*; approx. 23" x 19"
- 1333 Five unframed black and white photos of farm wagons; each approx. 20" x 15.5"
- 1334 Nine framed and unframed sepia photos of carriages
- 1335 Original sepia photo: *The Rolling, Mr W Wareham on Patching Farm in Worthing, circa 1900*
- 1336 Sepia photos of assorted cattle
- 1337 Four assorted photos depicting shearing and harvesting
- 1338 Four assorted photos of horses
- 1339 Five sepia photos of school children and factory workers
- 1340 Framed sepia photo of the trade union: *The Amalgamators Slaters & Tilers Provident Society Representatives at Triennial Conference Held in Birmingham, May 16-21 1921*, with key at the bottom
- 1341 Three sepia photos of groups of women with cycles outside a blacksmiths, a shop front and Oxford
- 1342 Large black and white photo depicting Shires with brewery drays and draymen dated 1932
- 1343 Large framed photo of a Shire and his handler; approx. 60" x 52"
- 1344 Assorted photos of trade vehicles
- 1345 Five assorted sepia photos of carriages
- 1346 Five assorted sepia carriage photos
- 1347 Five assorted sepia photos of country and horse scenes
- 1348 Six assorted group photos of hunting, shooting, etc
- 1349 Four assorted sepia photos of street scenes
- 1350 Large photos depicting cows in a field, *Another Source of our Supply*; approx. 24.5" x 46.5"
- 1351 Large drawing of a pair of Shires after a working day; approx. 35" x 24.5"
- 1352 Four sepia prints of photos of street scenes: *Rottingdean, 1904; The Square, Storrington, 1905; High Street, Cliffe, Lewes, 1905 and Ham Road, Shoreham, 1905*
- 1353 Unframed photo set outside an inn celebrating the Edward 7th Coronation in 1902
- 1354 Six photos of street scenes
- 1355 Group photo with pearly Kings and Queens: *The Costers' Pony and Donkey Show in Kensington 1928, Judges G.A.Ward, A.Goodiff O.D.F.L, Rev. A.W.Barker for H.R.H. Princess Louise*
- 1356 Framed sepia photo of *Sidcup Football Club, Season 1912-1913*, with key
- 1357 Seven assorted photos
- 1358 Six assorted photos of livestock and a print of two bulls
- 1359 Seven assorted photos of farming
- 1360 Six assorted photos of farming
- 1361 Six colour prints of game cocks by GJCK
- 1362 Two framed prints of coaching scenes in 1830: *Brighton to Portsmouth Road and London to Brighton Road*; glazing cracked

**PURCHASERS ARE REMINDED OF THE 10%
BUYERS PREMIUM
(PLUS VAT AT THE STANDARD RATE)
ADDED TO ALL LOTS IN THE SALE**

**Have you found something that we have
incorrectly named or described?
We would be pleased for you to tell us so
we can improve our knowledge of rural
tool and bygones.**

CARRIAGE AND EQUESTRIAN SALES FOR 2011

MONTHLY READING GENERAL SALE

Saturday 24th SEPTEMBER

INTERNATIONAL READING CONTRACTORS PLANT AUCTION

Thursday – 6th October

THE HEWDEN AUCTION OF CONTRACTORS' PLANT

Wednesday – 12th October

THE FINAL HORSE & SADDLERY SALE FOR 2011

Friday 14th October

THE READING SHETLAND PONY SHOW AND SALE

Wednesday – 19th October

THE NEXT READING CARRIAGE SALE FOR 2011

Wednesday 2nd November

ENTRIES FOR ALL THE ABOVE SALES NOW BEING ACCEPTED. FORMS ARE AVAILABLE FROM THE OFFICE OR ON LINE. PLEASE ENSURE WE HAVE YOUR ENTRIES SIX WEEKS PRIOR TO THE SALE

TO ENSURE INCLUSION IN THE CATALOGUES

All catalogues will be online prior to the sale.

If you would like to receive notification of all our sales via email (e-shot), please register on our website: www.tsauktion.co.uk

For further information about our world famous carriage sales or any other auctions or services we provide, please do contact us.

We look forward to hearing from you!

ACCOMMODATION IN READING

It is imperative that if you intend to spend the night in Reading you book well in advance. Reading is an extremely busy commercial centre and as a result, most hotels and Travel Lodges do not have rooms available at the last minute. Please refer to the list at the front of the catalogue, under Sale Notes or telephone our office for a more extensive list of accommodation, covering a wide range of prices.

CROWNE PLAZA READING – Caversham Bridge, Richfield Avenue, Reading RG1 8BD
10% discount off the best available rate at the Crowne Plaza Reading.
To book call 0118 925 9988 and quote T&S or email reservations@cp-reading.co.uk.

TRAVEL LODGE – nearest to the Market in central Reading - 08700 850950
Travel Lodge, Oxford Road - 0871 984 6357 & Whitley, Reading - 0871 984 6209

IBIS HOTEL – 0118 953 3500 www.ibishotel.com

NOVOTEL – 0118 952 2600

(Both on Friar Street, 10 minutes walk from the Market)

PREMIER INNS – www.premierinn.com

Letcombe St, RG1 2HN – 0871 527 8924

‘Caversham Bridge’ Richfield Avenue, RG1 8EQ – 0871 527 8922

Thimbleby & Shorland

Subscribe!

www.tsauktion.co.uk

The screenshot shows the website's header with the logo and navigation menu. A large grey callout bubble is overlaid on the page, containing the text: "Keep up to date with ALL T&S Auction Sales subscribe on-line you can unsubscribe anytime". Below the callout, the website content is visible, including a "FEATURED AUCTIONS" section for a "Reading General Sale" on Saturday 28th November, a "CATEGORIES" grid with icons for Plant & Machinery, Carriages, Property, Land Agency, General Auctions, Fine Art & Furniture, Vintage, and Equestrian, and an "UPCOMING AUCTIONS" list with items like "PRINTING MACHINERY", "MONTHLY READING GENERAL SALE", and "MONTHLY HORSE & SADDLERY SALE". A "KEEP YOURSELF UPDATED" section contains a form for email registration and a "Subscribe" button. The footer includes the company address and contact information.



31 Great Knollys Street,
Reading, Berkshire RG1 7HU
+44 (0)118 950 8611 Fax: +44(0)118 9505896
Email: info@thimbleby-shorland.co.uk

Notes

CONDITIONS OF SALE

1. The highest bidder for each lot shall be the Purchaser, and in the event of any dispute the Auctioneers shall have absolute discretion either to settle such dispute or to re-offer the lot immediately.
2. No person may advance less at a bid than a sum to be named from time to time by the Auctioneer, nor shall any bidding be retracted. The Auctioneer may, without giving any reason therefore, refuse to accept the bidding of any person or persons.
3. All lots are put up for sale subject to any reserve price placed by the Vendors, who may bid for any lot or lots, and may withdraw any lot or lots, either personally or through the Auctioneer or through any other person, as many times as they respectively may think fit.
4. Each Purchaser shall give his or her name and address in writing (if required) to the Auctioneer at the Sale, and pay the full purchase money at the close of the Sale, or, if required, the whole or a portion of the purchase money, as the Auctioneer may determine, during the course of the Sale. If any Purchaser fails to comply with any of these conditions the lot or lots in respect of which such failure is made may, if the Auctioneer thinks fit, be put up again and resold. If upon such resale a lower price is obtained for any of such lots than was obtained on the first sale the difference in price shall be a debt due from the Purchaser in default upon the first sale.
5. No lot or lots shall be removed from the premises until paid for, but each and every lot shall immediately at the fall of the hammer be considered as delivered, and be and remain in every respect at the absolute risk of the respective Purchaser or Purchasers thereof, and shall be removed at the Purchaser's expense after the conclusion of the Sale and taken with all faults or errors of description.
6. The Auctioneers act only as agents for the Vendor(s) and are not responsible for any default by either Vendor(s) or Purchaser. In particular, they shall not be liable to pay the Vendor until payment is received from the Purchaser.
7. No undertaking of the Auctioneers or their employees to take charge of any lots after the sale or to forward them to their destination shall be held to impose, upon the Auctioneers any legal obligation or vitiate any of the foregoing conditions.
8. Purchasers paying by cheque must be prepared, if required, to produce a banker's reference. The Auctioneers reserve the right in their sole discretion to refuse payment by cheque.
9. In all cases of transfer the original Purchaser shall be held responsible for the purchase money.
10. The Auctioneer reserves the right to withdraw or divide any lot or to combine any two or more lots at his sole discretion and to sell in such order as he may think fit.
11. The Auctioneers have described the lots to the best of their ability and belief from information furnished by the Vendors who shall be alone responsible for any error or mis-statement which there may be. The Auctioneers undertake no liability whatever in respect of any faults, deficiencies and errors of any description, oral or printed, nor do they accept responsibility for the authenticity, genuineness, origin, age, condition or quality of any lot and all statements as to these matters whether contained in the catalogue or made orally are statements of opinion only and are not to be taken as being or implying a statement or representation of fact. Any intending Purchaser must satisfy himself by inspection or otherwise as to the correctness of each such statement. The Vendor does not make or give and neither the Auctioneers, nor any person in their employ have any authority to make or give any representation or warranty in relation to any of the lots without the express instructions of the Vendor(s).
12. The Auctioneers accept no responsibility in connection with the commissioning of their staff to bid for any lots. Reserves and commissions given verbally or by telephone are accepted at sender's risk and must be confirmed in writing before the Sale.
13. THIRD PARTY LIABILITY. All persons on the Auctioneers' premises before, during or after the Sale shall be deemed to be there at their own risk and with notice of the condition of the premises and of the method of arranging lots and shall have no claim against the Auctioneers in respect of any injury or accident which may occur from any cause whatsoever.
14. If any Purchaser shall fail to comply with the above conditions or any of them, the Auctioneers shall be at liberty to recover in full the amount of the purchase money of the lot or lots bought by such Purchaser together with all interest, costs, charges and expenses, without reference to any delivery or acceptance of the lot or lots, other than the first delivery by the fall of the hammer, or to resell any lot or lots bought by such Purchasers, either by public or private sale, and the full amount of the purchase money at the present sale, or the deficiency (if any) arising from the second sale, together with all interest, costs, charges and expenses, shall be made good by the defaulter, and be recoverable as and for liquidated damages.

Auctioneers: THIMBLEBY & SHORLAND, READING

NOTE - Purchasers or their agents are requested to obtain accounts and delivery orders at the Auctioneers' Office before leaving the place of sale and carefully to examine same. The Auctioneers cannot be held responsible for any errors in accounts or delivery orders unless they are notified of such errors on the day of sale and before the lots are removed from the premises.



Thimbleby & Shorland

31 Great Knollys Street, Reading, Berkshire RG1 7HU Tel: +44 (0) 118 950 8611 Fax: +44 (0) 118 950 5896
www.tsauktion.co.uk info@tsauktion.co.uk